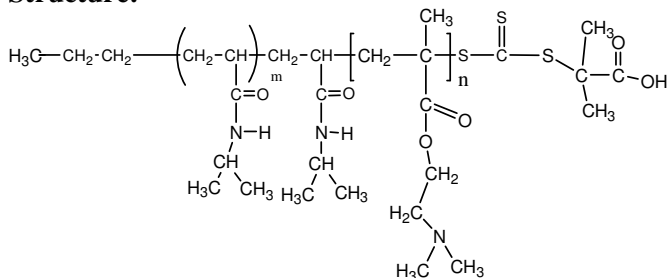


Sample Name:

Poly(N-isopropylacrylamide -b- NN-dimethylaminoethylmethacrylate)

Sample #: **P16068C3-NIPAMDMAEMA**

Structure:



Composition:

Mn x 10 ³ PNIPAM-b-NNDMAEMA	20.0-b-40.0
PDI	1.7

Dp for each block PNIPAM-b-NNDMAEMA	177-b-255
--	-----------

Synthesis Procedure: Poly(N-isopropylacrylamide -b- NN-dimethylaminoethylmethacrylate) was synthesized by RAFT polymerization.

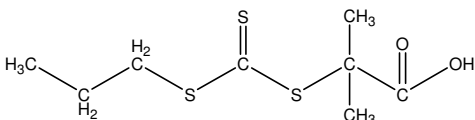
Characterization:

The molecular weight and polydispersity index (PDI) of diblock copolymer were obtained by size exclusion chromatography (SEC). The composition of the polymer was characterized by NMR.

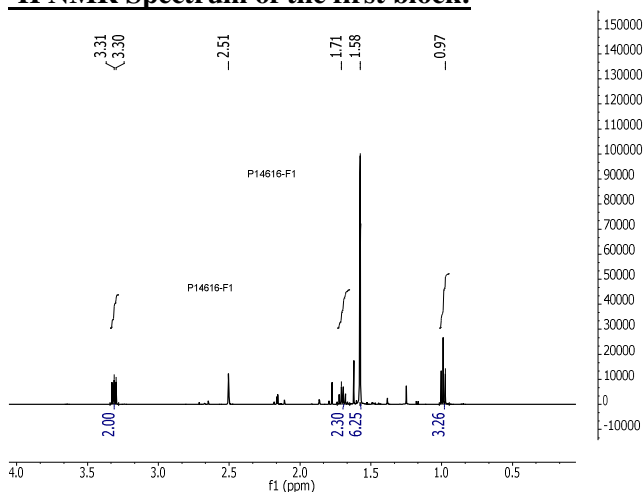
Solubility:

The polymer is soluble in THF, DMF, Acetone.

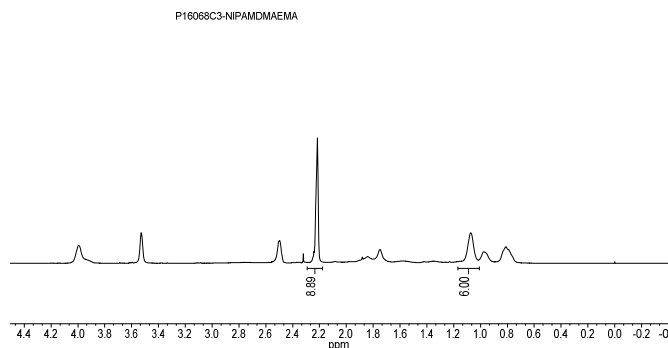
RAFT reagent used for polymerization:



¹H NMR Spectrum of the first block:



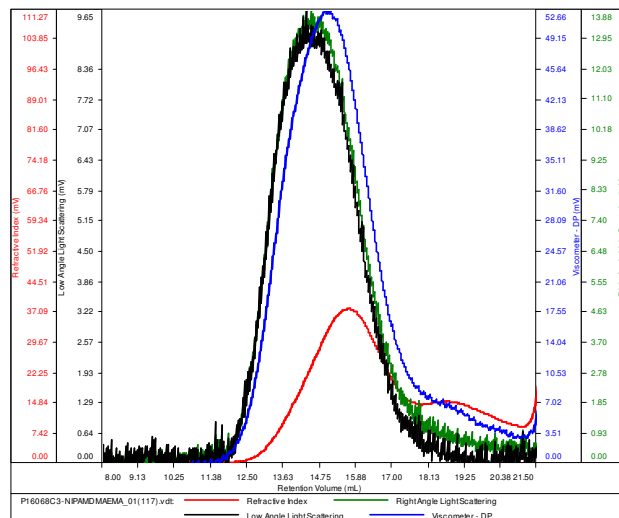
¹H NMR Spectrum of the block copolymer:



SEC elugram of the polymer:

P16068-C3-NIPAMDMAEMA

Conc (mg/mL)	5.2554
dn/dc (mL/g)	0.0800
Method	PS80k-May-25-2016-0000.vcm
Solvent	DMF w 0.023M LiBr
Column	PSS



Sample	Mn	Mw	Mp	Mw/Mn	IV
P16068C3-NIPAMDMAEMA_01(117).vc	59,792	102,529	71,402	1.715	0.3484