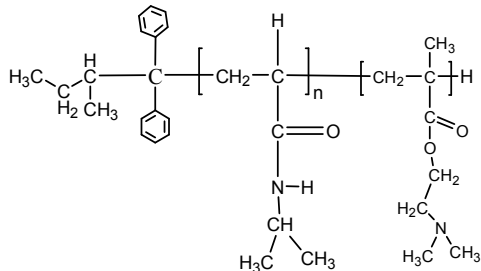


Sample Name:

**Poly(N-isopropylacrylamide -b- NN-dimethylaminoethylmethacrylate)**

Sample #: **P40045-NIPAMDMAEMA**

**Structure:**

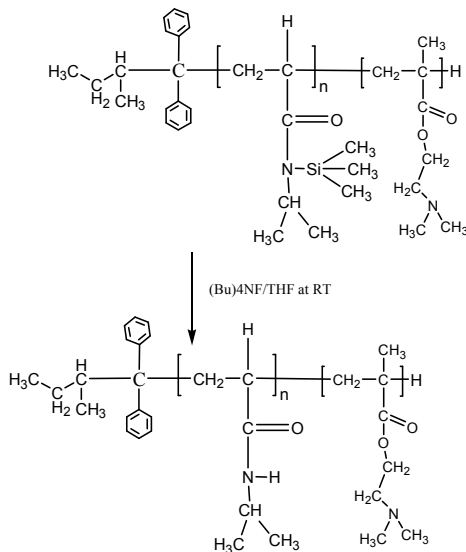


**Composition:**

Mn x 10 <sup>3</sup> PNIPAM-b-NNDMAEMA	PDI
5.0-b-33.0 Composition from HNMR	1.05
Dp: 44-b-216	

**Synthesis Procedure:**

The polymer was synthesized by anionic process;



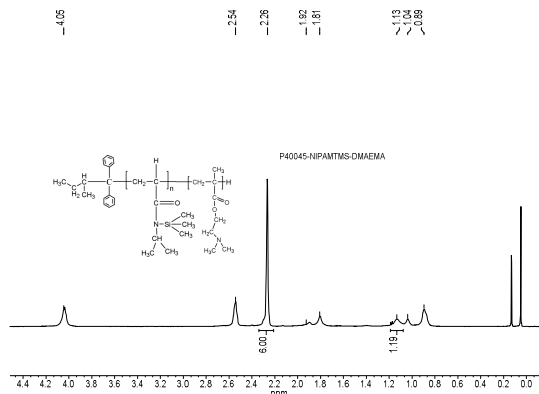
**Characterization:**

The polymer was characterized by SEC and <sup>1</sup>H NMR.

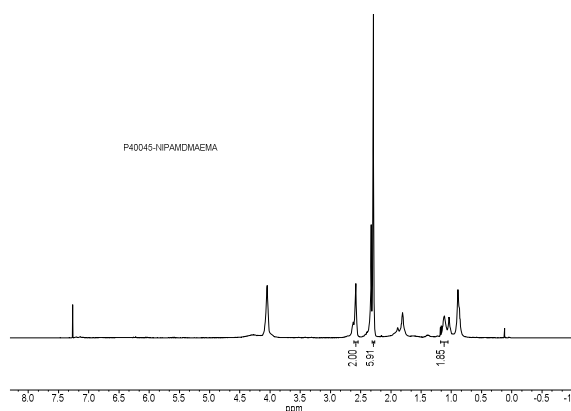
**Solubility:**

The polymer is soluble in THF, DMF, Acetone.

**<sup>1</sup>H NMR Spectrum of the block copolymer: NIPAM Protected**



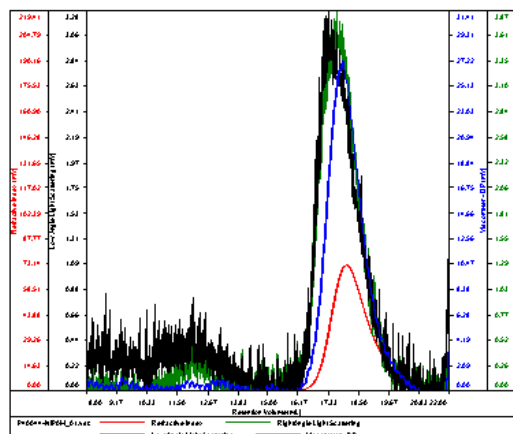
**<sup>1</sup>H NMR Spectrum of the block copolymer:**



**SEC elugram of the First block:**

**P40045-NIPAM first Block**

Cone (mg/mL)	5.6842
dn/dc (mL/g)	0.0770
Method	PS600-14/22-2016-0000.um
Solvent	DMF w/ 0.023M LiBr
Column	PSS

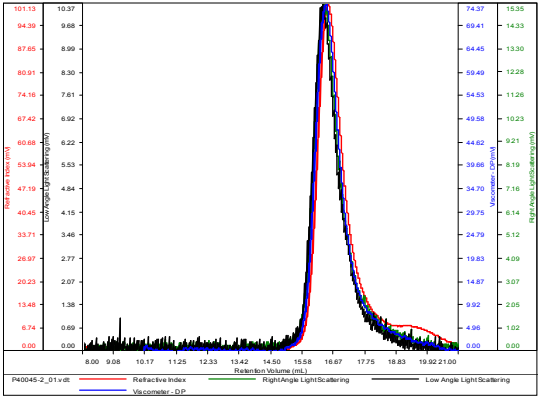


Sample	Mn	Mw	Mp	Mw/Mn	I
P4004 NIPAM_01.umt	8,692	11,700	11,813	1.346	0.0802

SEC elugram of the block copolymer:

P40045-NIPAMDMAEMA

Conc (mg/mL)	5.0025
dn/dc (mL/g)	0.0770
Method	PS80k-July22-2016-0000.vcm
Solvent	DMF w 0.023M LiBr
Column	PSS



Sample	Mn	Mw	Mp	Mw/Mn	IV
P40045-2_01.vdt	38,191	40,112	37,950	1.050	0.1758