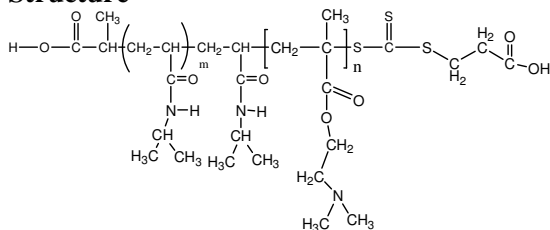


Sample Name:

Poly(N-isopropylacrylamide -b- NN-dimethylaminoethylmethacrylate)

Sample #: **P16035F6-NIPAMDMAEMA**

Structure



Composition:

Mn x 10 ³ PNIPAM-b-NNDMAEMA	PDI
8.0-b-110.0	2.0

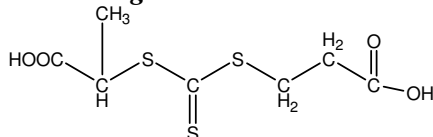
Synthesis Procedure: The polymer was synthesized by RAFT process

Characterization:

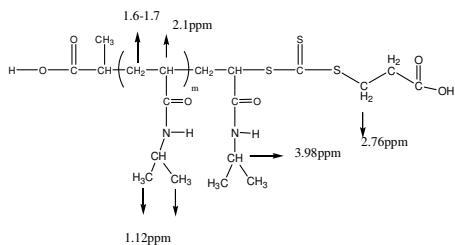
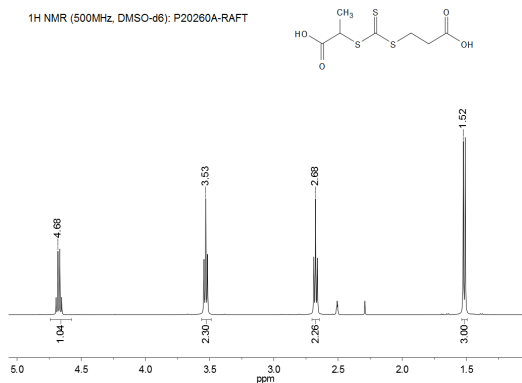
The polymer was characterized by SEC and ¹H NMR

Solubility: The polymer is soluble in THF, DMF, Acetone.

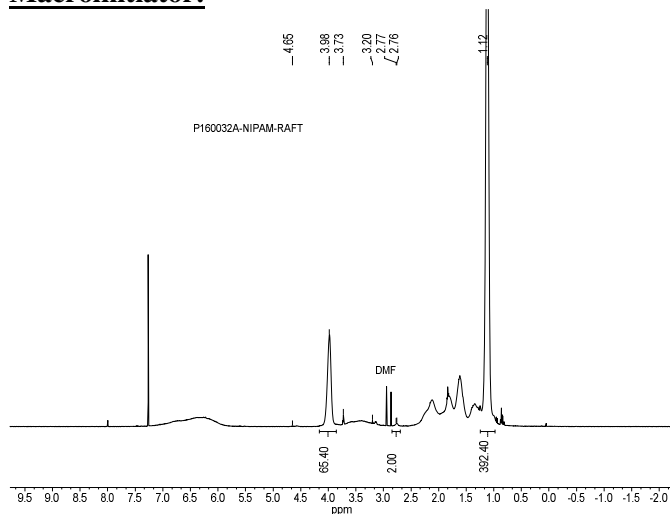
RAFT reagent used:



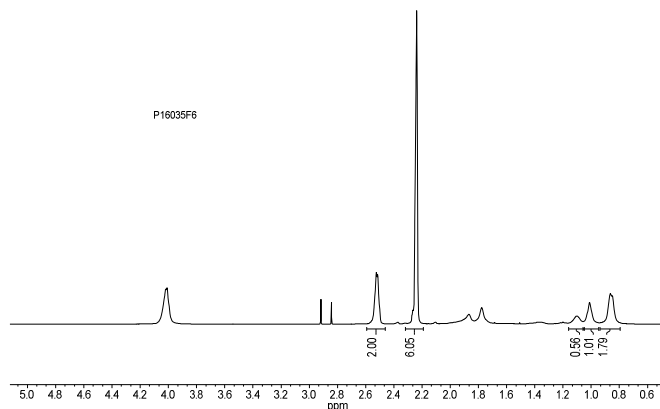
¹H NMR spectrum of the RAFT reagent:



¹H NMR spectrum of the PNIPAMRAFT Macroinitiator:

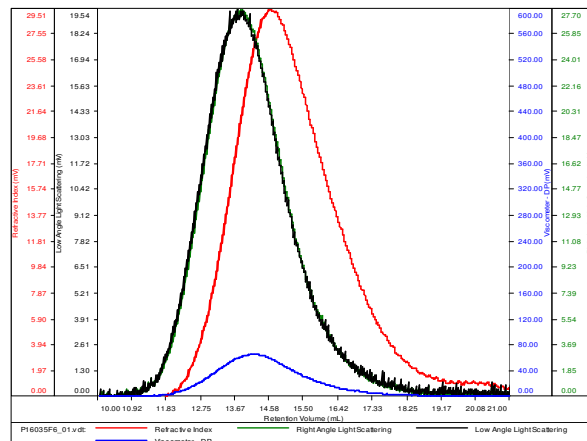


¹H NMR Spectrum of the block copolymer:



SEC elugram of the block copolymer: P16035F6-NIPAMDMAEMA

Conc (mg/mL)	4.2092
dn/dc (mL/g)	0.0800
Method	PS80k-May-25-2016-0000.vcm
Solvent	DMF w 0.023M LiBr
Column	PSS



Sample	Mn	Mw	Mp	Mw/Mn	IV
P16035F6_01.vcl	111,475	228,709	199,495	2.052	0.4343