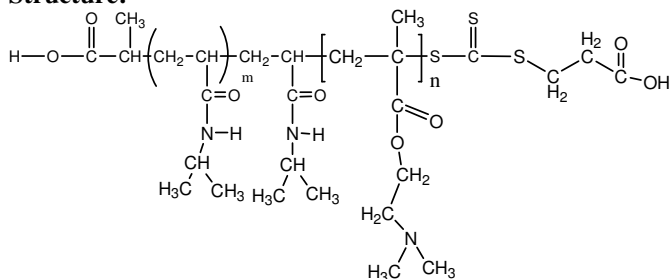


Sample Name:

Poly(N-isopropylacrylamide -b- NN-dimethylaminoethylmethacrylate)

Sample #: **P16035F-NIPAMDMAEMA**

Structure:

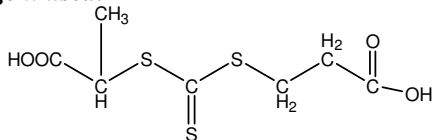


Composition:

Mn x 10 ³	PDI
PNIPAM-b-NNDMAEMA	
8.0-b-76.0	2.0

Synthesis Procedure: The polymer was synthesized by RAFT process

RAFT reagent used:



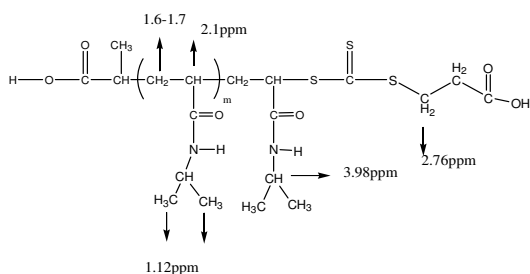
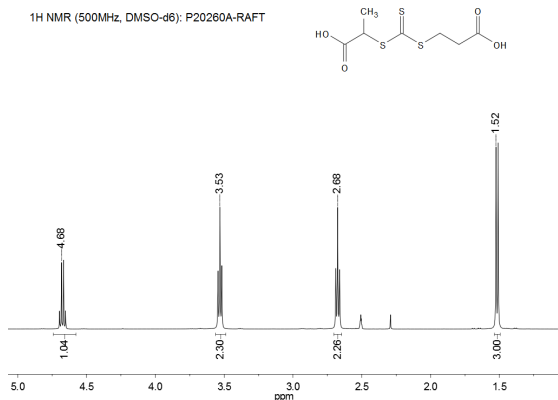
Characterization:

The polymer was characterized by SEC and ¹H NMR

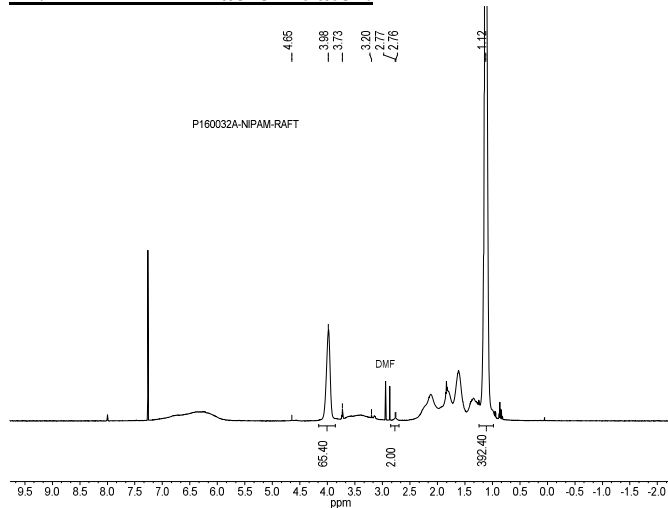
Solubility:

The polymer is soluble in water, methanol

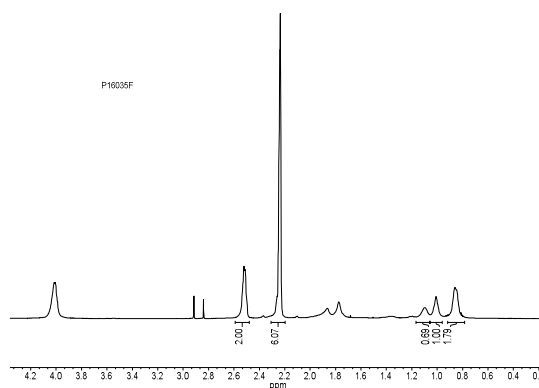
¹H NMR spectrum of the RAFT reagent:



PNIPAMRAFT Macroinitiator:



¹HNMR Spectrum of the block copolymer:

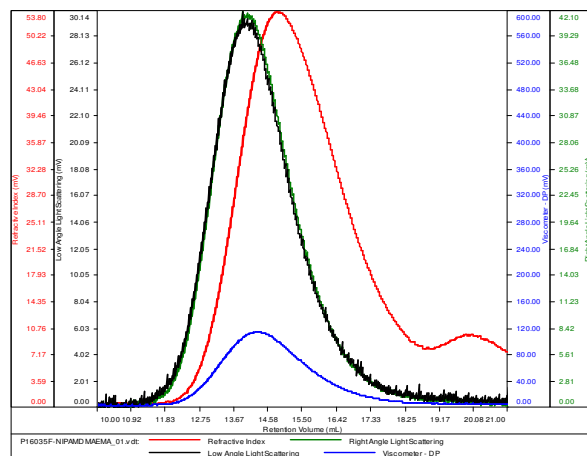


Solubility: The polymer is soluble in THF, DMF, Acetone.

SEC elugram of the block copolymer:

P16035F-NIPAMDMAEMA

Conc (mg/mL)	8.4504
dn/dc (mL/g)	0.0800
Method	PS80k May-25-2016-0000.vcm
Solvent	DMF w 0.023M LiBr
Column	PSS



Sample	Mn	Mw	Mp	Mw/Mn	IV
P16035F-NIPAMDMAEMA_01.vdt	84,142	172,103	162,470	2.045	0.4132