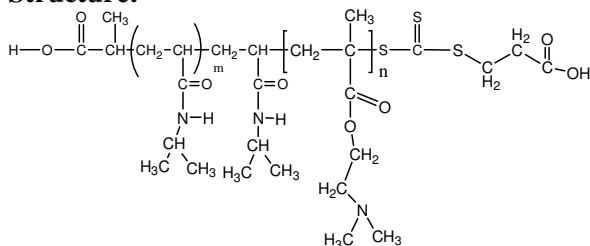


Sample Name:

Poly(N-isopropylacrylamide-b-N,N-dimethylaminoethylmethacrylate)

Sample #: **P16035D-NIPAMDMAEMA**

Structure:



Composition:

Mn x 10 ³ PNIPAM-b-NNDMAEMA	PDI
4.0-b-101.0	2.0

Synthesis Procedure: The polymer was synthesized by RAFT process.

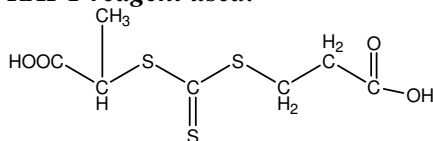
Characterization:

The polymer was characterized by ¹H NMR.

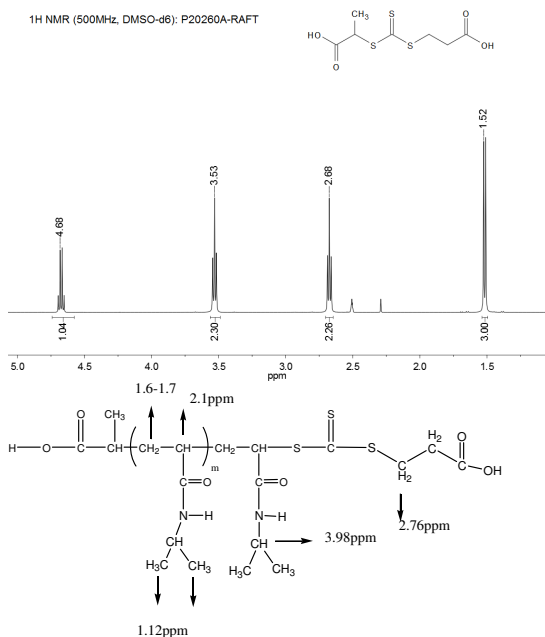
Solubility:

The polymer is soluble in water, methanol

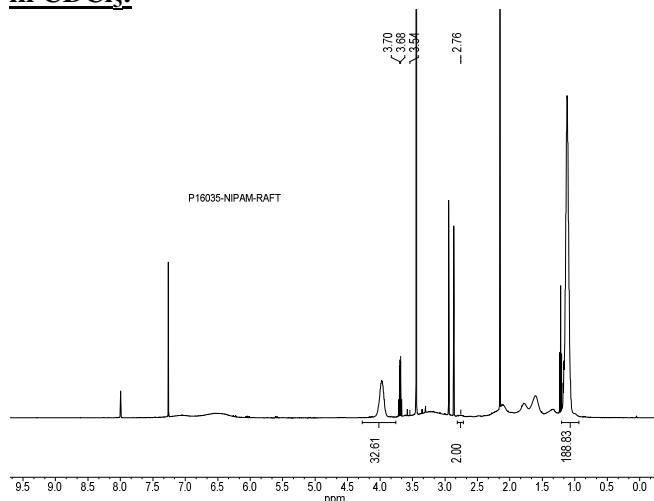
RAFT reagent used:



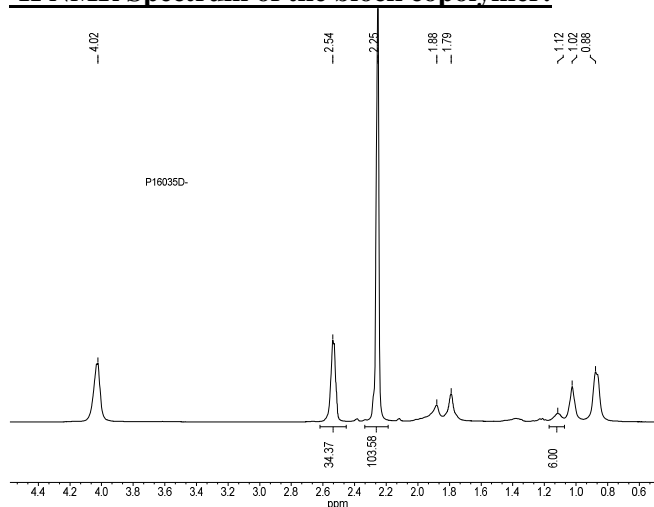
¹H NMR spectrum of the RAFT reagent:



¹H NMR spectrum of the PNIPAM-Macroinitiator in CDCl₃:

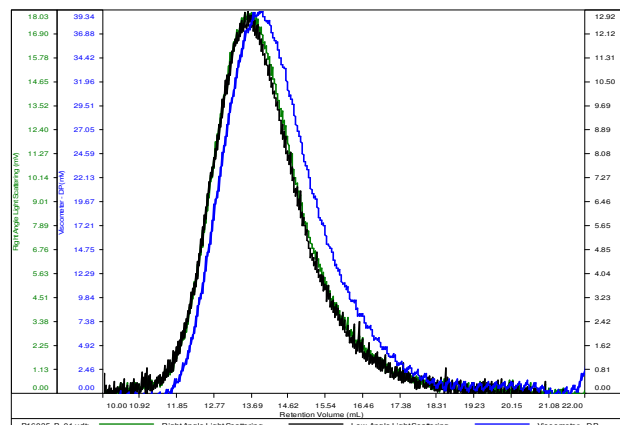


¹H NMR Spectrum of the block copolymer:



SEC elugram of the block copolymer:
P16035B-NIPAMDMAEMA

Conc (mg/mL)	2.2931
dn/dc (mL/g)	0.0870
Method	PS80k May 25 2016 0000.vcm
Solvent	DMF w 0.023M LiBr
Column	PSS



Sample	Mn	Mw	Mp	Mw/Mn	IV
P16035-B_01.vct	104,872	212,293	200,244	2.024	0.5099