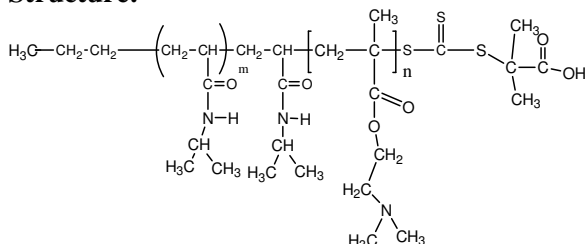


Sample Name:

**Poly(N-isopropylacrylamide -b- N,N-dimethylaminoethylmethacrylate)**

Sample #: **P16068C2-NIPAMDMAEMA**

Structure:



Composition:

Mn x 10 <sup>3</sup> PNIPAM-b-NNDMAEMA	15.0-b-115.0
PDI	1.4
Dp for each block PNIPAM-b-NNDMAEMA	132-b-733

**Synthesis Procedure:** Poly(N-isopropylacrylamide -b- NN-dimethylaminoethylmethacrylate) was synthesized by RAFT polymerization.

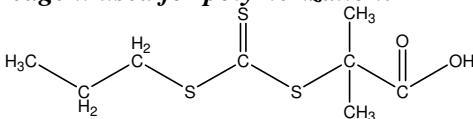
**Characterization:**

The molecular weight and polydispersity index (PDI) of diblock copolymer were obtained by size exclusion chromatography (SEC). The composition of the polymer was characterized by NMR.

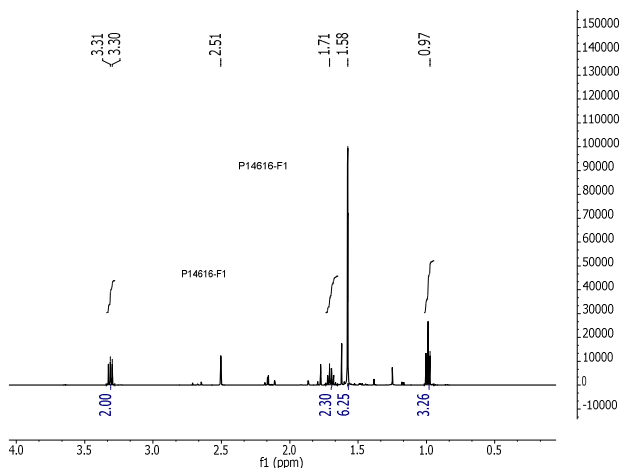
**Solubility:**

The polymer is soluble in THF, DMF, Acetone.

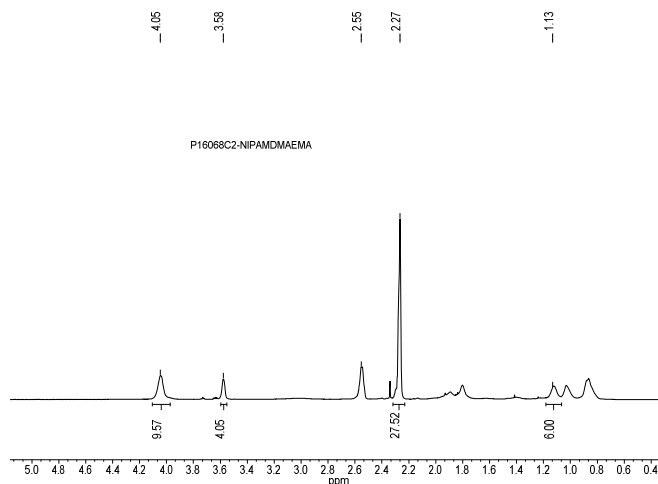
**RAFT reagent used for polymerization:**



**<sup>1</sup>H NMR Spectrum of the first block of block copolymer:**



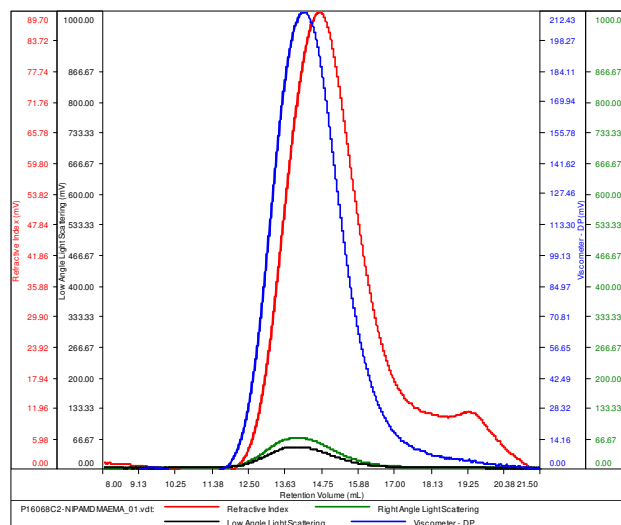
**<sup>1</sup>H NMR Spectrum of the block copolymer:**



**SEC elugram of the polymer:**

**P16068-C2-NIPAMDMAEMA**

Conc (mg/mL)	11.3084
dn/dc (mL/g)	0.0800
Method	PS80k-May-25-2016-0000.vcm
Solvent	DMF w 0.023M LiBr
Column	PSS



Sample	Mn	Mw	Mp	Mw/Mn	IV
P16068C2-NIPAMDMAEMA_01.vdt	130,469	194,061	171,280	1.487	0.5138