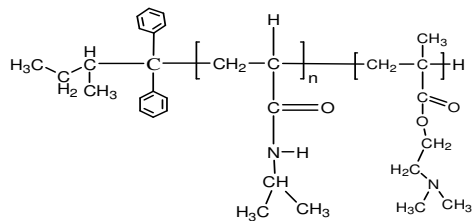


Sample Name:
Poly(N-isopropylacrylamide -b- N,N-dimethylaminoethylmethacrylate)

Sample #: P40044-NIPAMDMAEMA

Structure:

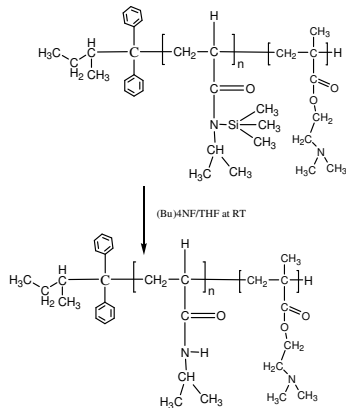


Composition:

Mn x 10 ³ PNIPAM-b-NNDMAEMA	PDI
13.0-b-91.0 Composition from ¹ H NMR	1.12

Dp: 115-b-580	
------------------	--

Synthesis Procedure: The polymer was synthesized by anionic process:

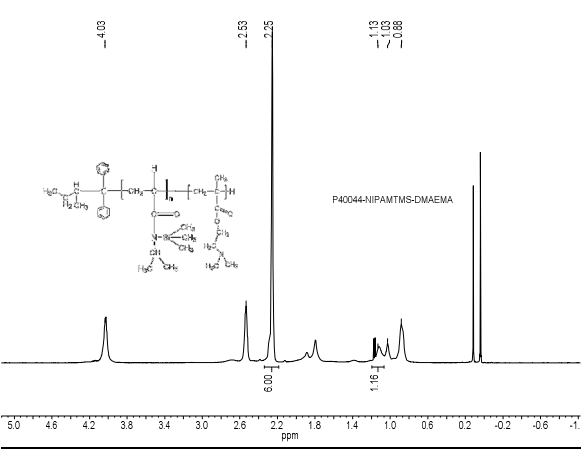


Characterization:

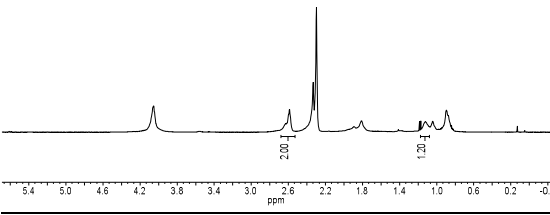
The polymer was characterized by SEC and ¹H NMR.

Solubility: The polymer is soluble in THF, DMF, Acetone.

¹H NMR spectrum of the block copolymer:



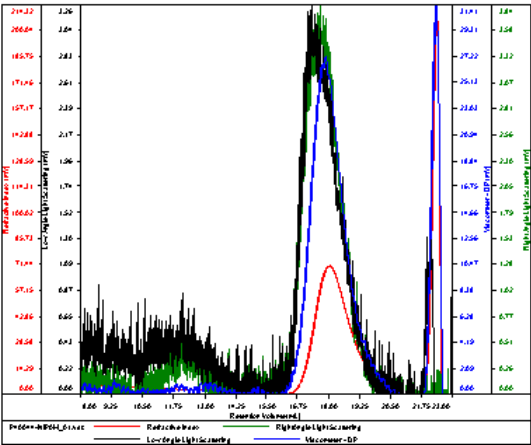
P40044-3 NIPAM-DMAEMA



SEC elugram of the copolymer:

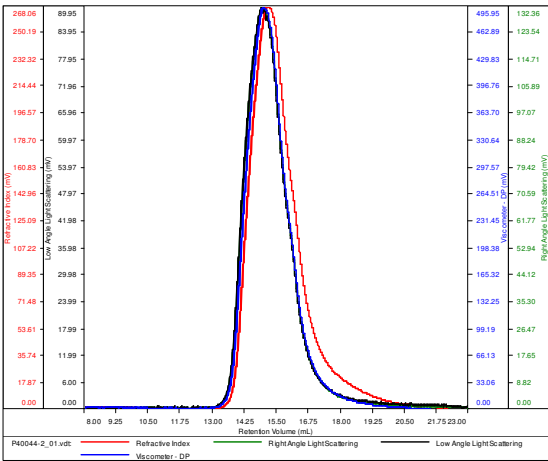
P40044-1

Conc (mg/mL)	5.3732
dn/dc (mL/g)	0.0770
Method	PS80k-July22-2016-0000.vcm
Solvent	DMF w 0.023M LiBr
Column	PSS



P40044-NIPAM(TMS)-DMAEMA

Conc (mg/mL)	23.8637
dn/dc (mL/g)	0.0800
Method	PS80k-July22-2016-0000.vcm
Solvent	DMF w 0.023M LiBr
Column	PSS



Sample	Mn	Mw	Mp	Mw/Mn	IV
P40044-2-01.vdt	103,572	116,318	121,346	1.123	0.4135