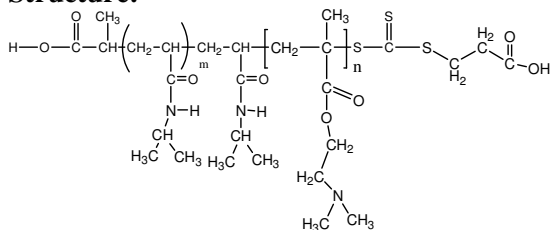


Sample Name:

Poly(N-isopropylacrylamide -b- NN-dimethylaminoethylmethacrylate)

Sample #: P16035K-NIPAMDMAEMA

Structure:



Composition:

Mn x 10 <sup>3</sup> PNIPAM-b-NNDMAEMA	PDI
8.0-b-64.0	2.6

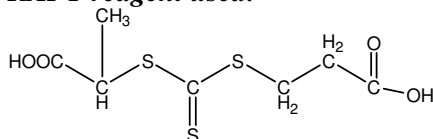
**Synthesis Procedure:** The polymer was synthesized by RAFT process

**Characterization:**

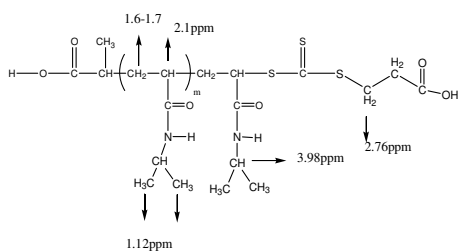
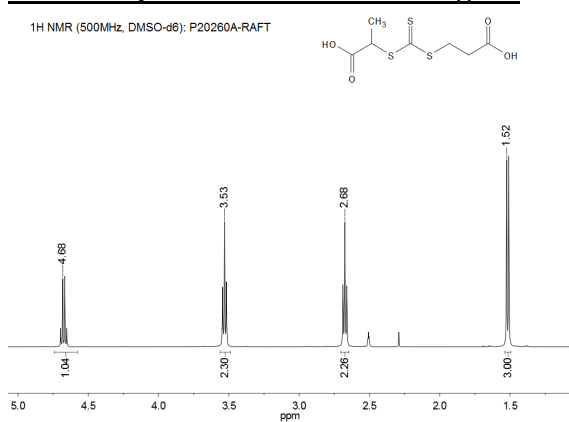
The polymer was characterized by SEC and <sup>1</sup>H NMR

**Solubility:** The polymer is soluble in THF, DMF, Acetone.

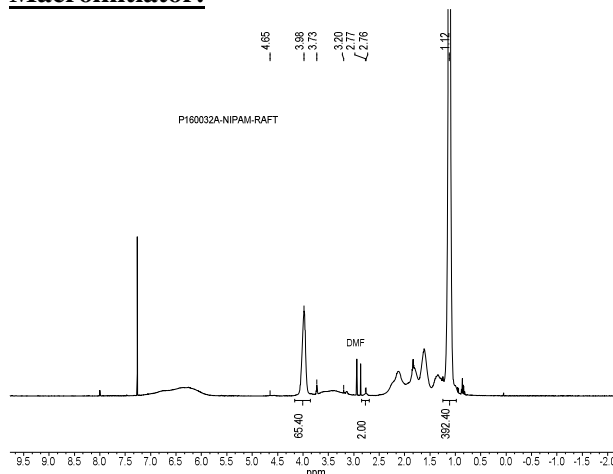
**RAFT reagent used:**



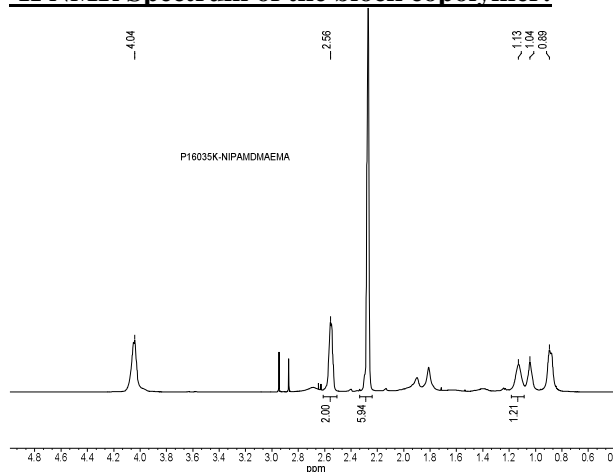
**<sup>1</sup>H NMR spectrum of the RAFT reagent:**



**<sup>1</sup>H NMR Spectrum of PNIPAMRAFT Macroinitiator:**

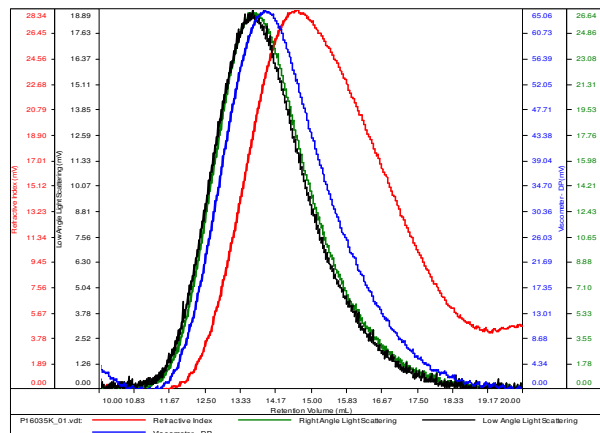


**<sup>1</sup>H NMR Spectrum of the block copolymer:**



**SEC elugram of the block copolymer:**  
P16035K-NIPAMDMAEMA

Conc (mg/mL)	4.9811
dn/dc (mL/g)	0.0800
Method	PS80k-May 25-2016-0000.vcm
Solvent	DMF w 0.023M LiBr
Column	PSS



Sample	Mn	Mw	Mp	Mw/Mn	IV
P16035K_01.vcl	71,753	189,795	170,932	2.645	0.4219