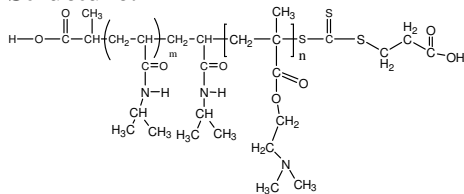


Sample Name:

Poly(N-isopropylacrylamide -b- NN-dimethylaminoethylmethacrylate)

Sample #: P16035G4-NIPAMDMAEMA

Structure:



Composition:

Mn x 10 ³ PNIPAM-b-NNDMAEMA	PDI
2.0-b-20.0`	1.65

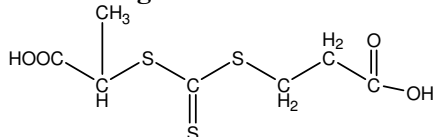
Synthesis Procedure: The polymer was synthesized by RAFT process

Characterization:

The polymer was characterized by ¹H NMR and SEC

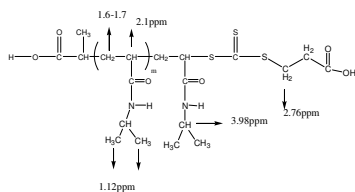
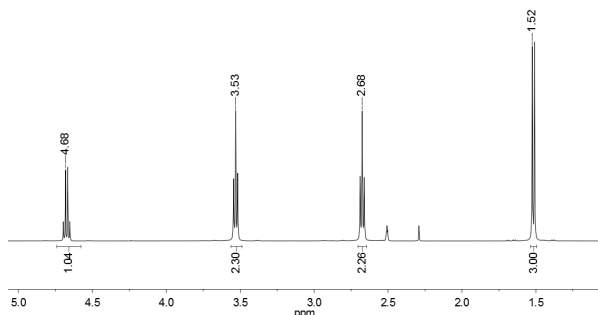
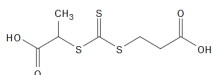
Solubility: The polymer is soluble in THF, DMF, Acetone.

RAFT reagent used:

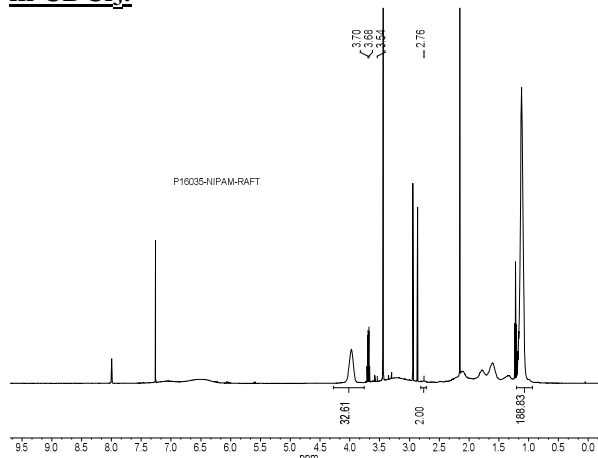


¹H NMR spectrum of the RAFT reagent:

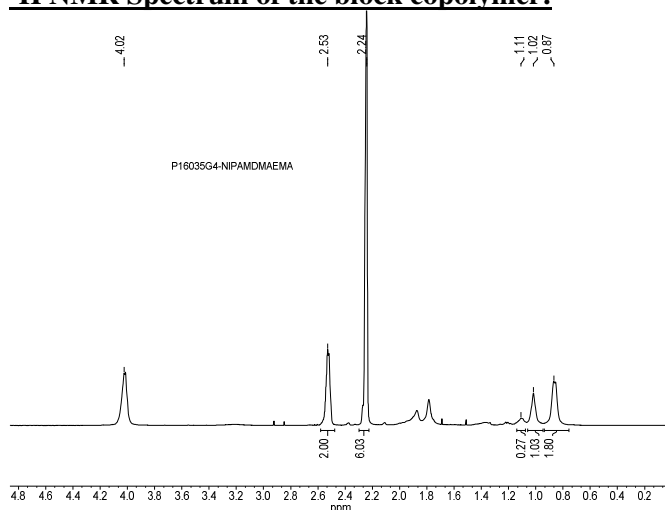
¹H NMR (500MHz, DMSO-d₆): P20260A-RAFT



¹H NMR spectrum of the PNIPAM-Macroinitiator in CDCl₃:



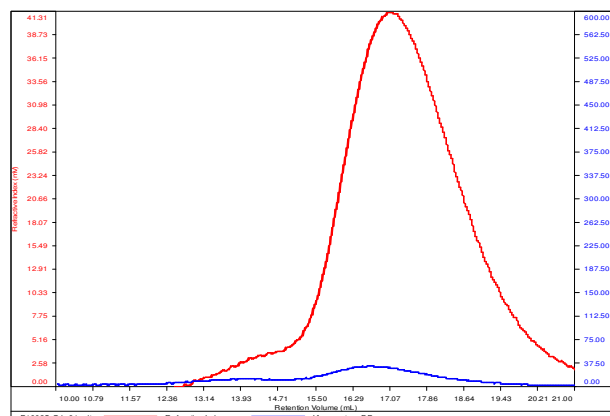
¹H NMR Spectrum of the block copolymer:



SEC elugram of the block copolymer:

P16035G4-NIPAMDMAEMA

Conc (mg/mL)	5.6129
dn/dc (mL/g)	0.0800
Method	PS80k-May-25-2016-0000.vcm
Solvent	DMF w 0.023M LiBr
Column	PSS



Sample	Mn	Mw	Mp	Mw/Mn	IV
P16035-G4_01.vcl	21,659	35,851	31,455	1.655	0.1729