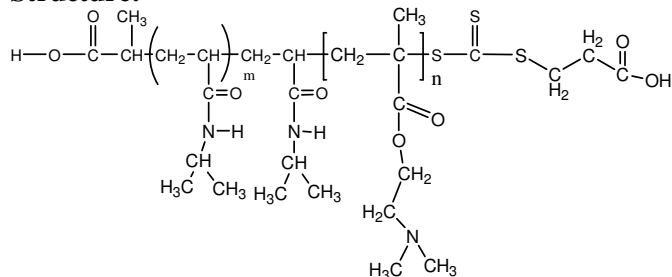


Sample Name:

**Poly(N-isopropylacrylamide -b- NN-dimethylaminoethylmethacrylate)**

Sample #: **P16035G3-NIPAMDMAEMA**

**Structure:**



**Composition:**

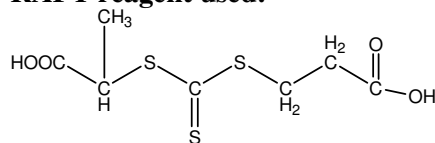
Mn x 10 <sup>3</sup> PNIPAM-b-NNDMAEMA	PDI
45.0-b-218.0	1.5

**Synthesis Procedure:** The polymer was synthesized by RAFT process

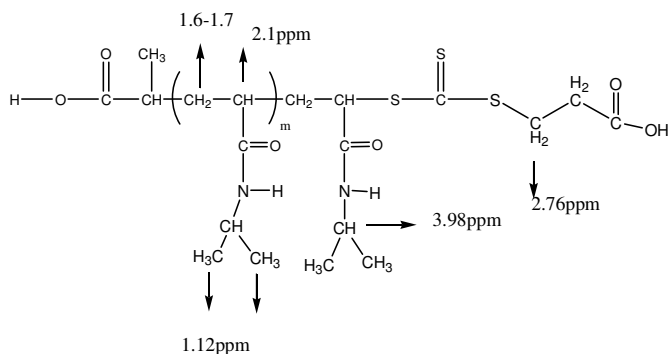
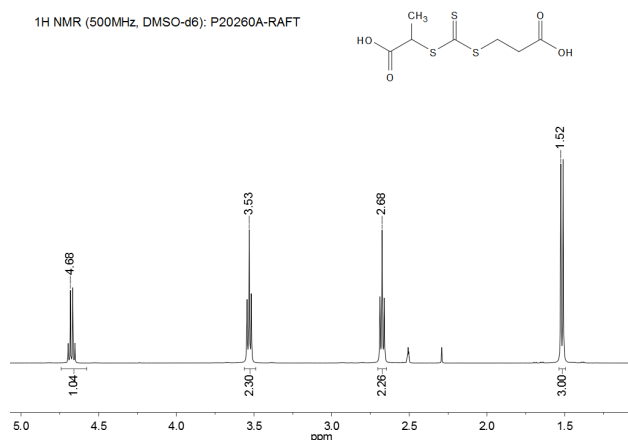
**Characterization:** The polymer was characterized by <sup>1</sup>H NMR and SEC analysis.

**Solubility:** The polymer is soluble in THF, DMF, Acetone.

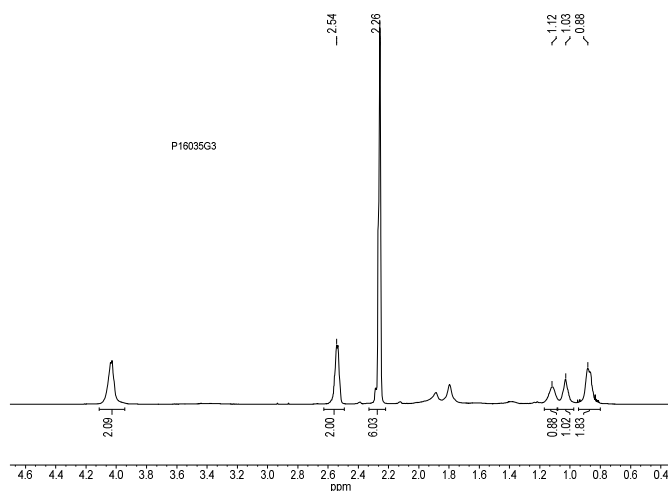
**RAFT reagent used:**



**<sup>1</sup>H NMR spectrum of the RAFT reagent:**



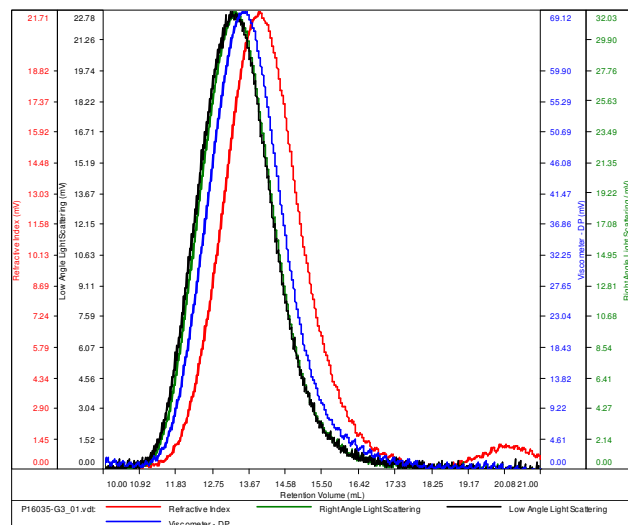
**<sup>1</sup>H NMR Spectrum of the block copolymer:**



**SEC elugram of the block copolymer:**

**P16035G3-NIPAMDMAEMA**

Conc (mg/mL)	2.3648
dn/dc (mL/g)	0.0800
Method	PS80k-May-25-2016-0000.vcm
Solvent	DMF w 0.023M LiBr
Column	PSS



Sample	Mn	Mw	Mp	Mw/Mn	IV
P16035-G3_01.vdt	263,431	410,005	320,181	1.556	0.7310

(v.K-01)