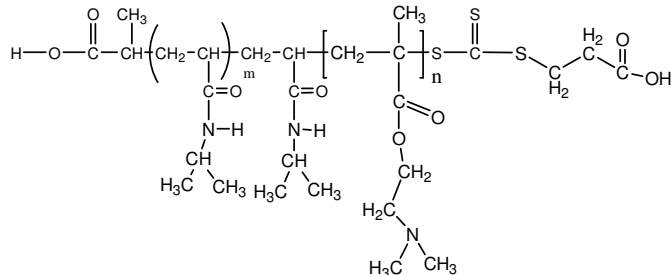


Sample Name:

Poly(N-isopropylacrylamide -b- NN-dimethylaminoethylmethacrylate)

Sample #: **P16046A3-NIPAMDMAEMA**

Structure:



Composition:

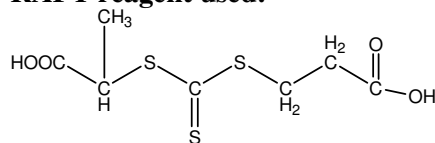
Mn x 10 ³ PNIPAM-b-NNDMAEMA	PDI
20.0-b-165.0	2.3

Synthesis Procedure: The polymer was synthesized by RAFT process

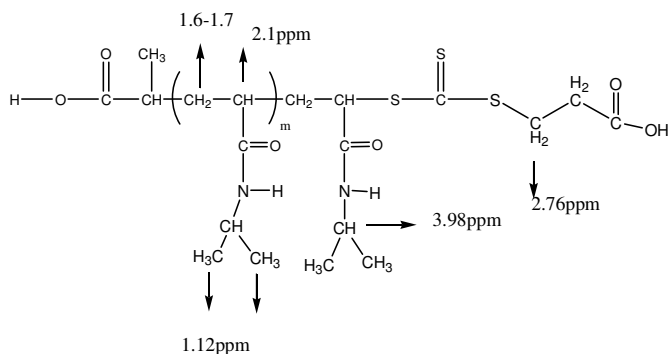
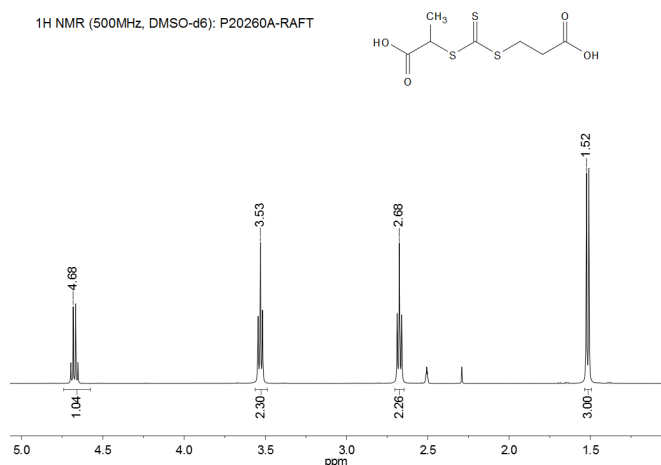
Characterization: The polymer was characterized by ¹H NMR and SEC analysis.

Solubility: The polymer is soluble in THF, DMF, Acetone.

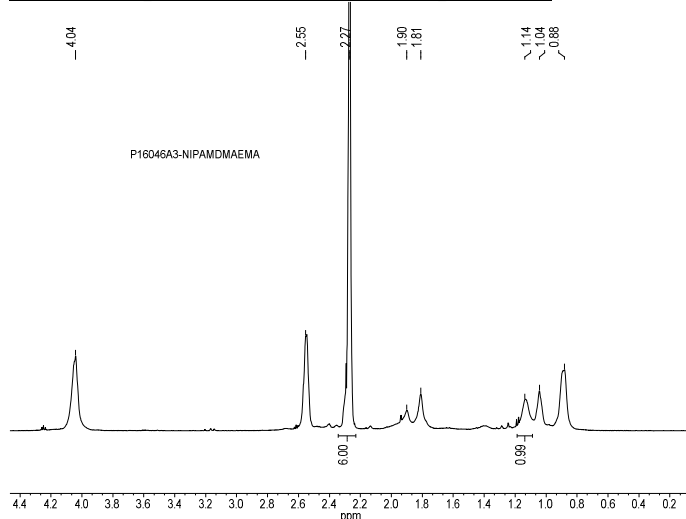
RAFT reagent used:



¹H NMR spectrum of the RAFT reagent:



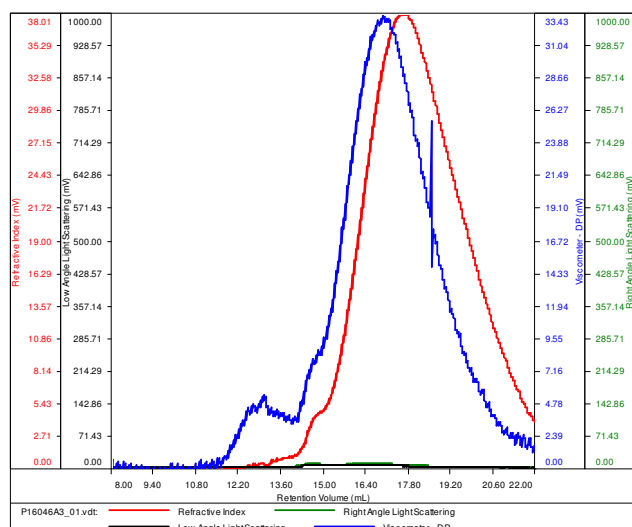
¹H NMR Spectrum of the block copolymer:



SEC elugram of the block copolymer:

P16046A3-NIPAMDMAEMA

Conc (mg/mL)	1.0000
dn/dc (mL/g)	0.0800
Method	PS80k-July-2016-0002.vcm
Solvent	DMF w 0.023M LiBr
Column	PSS



Sample	Mn	Mw	Mp	Mw/Mn	IV
P16046A3_01.vdt	186,695	436,826	286,513	2.340	1.3890

(v.K-01)