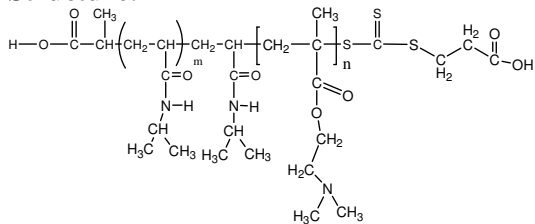


Sample Name:

**Poly(N-isopropylacrylamide -b- NN-dimethylaminoethylmethacrylate)**

Sample #: **P16035G1-NIPAMDMAEMA**

Structure:



Composition:

Mn x 10 <sup>3</sup> PNIPAM-b-NNDMAEMA	PDI
4.0-b-101.0	1.8

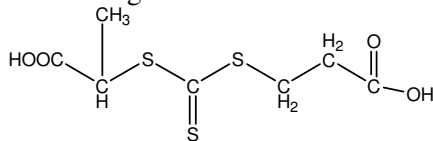
**Synthesis Procedure:** The polymer was synthesized by RAFT process

**Characterization:**

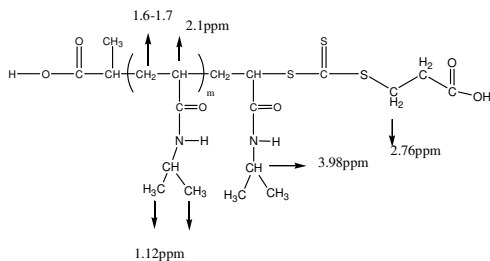
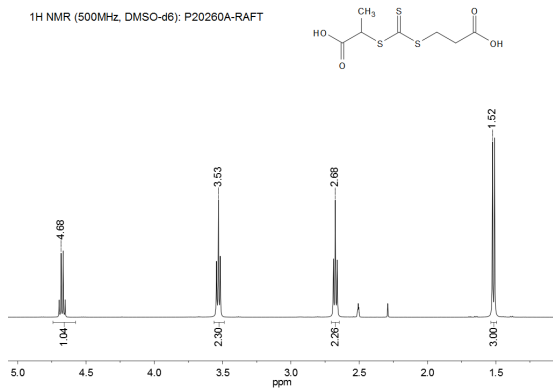
The polymer was characterized by SEC and <sup>1</sup>H NMR

**Solubility:** The polymer is soluble in THF, DMF, Acetone.

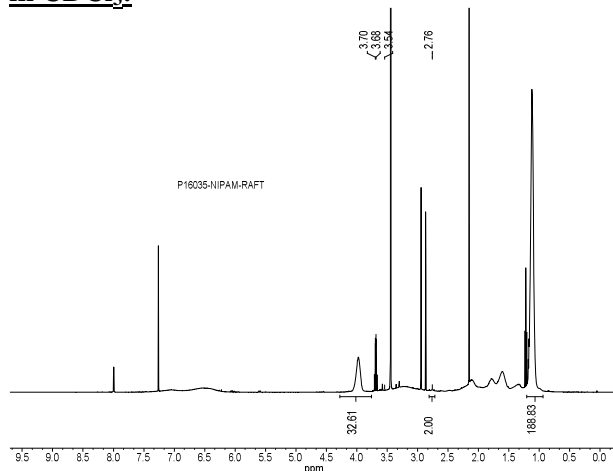
RAFT reagent used:



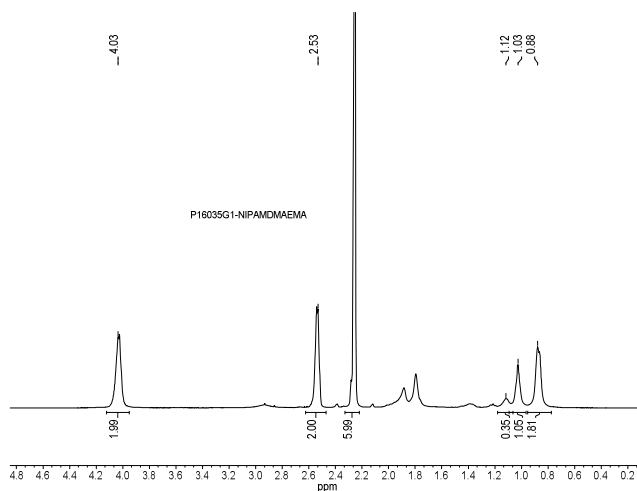
**<sup>1</sup>H NMR spectrum of the RAFT reagent:**



**<sup>1</sup>H NMR spectrum of the PNIPAM-Macroinitiator in CDCl<sub>3</sub>:**



**<sup>1</sup>H NMR Spectrum of the block copolymer:**



**SEC elugram of the block copolymer:**

