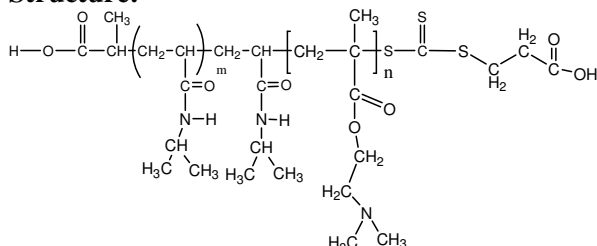


Sample Name:

Poly(N-isopropylacrylamide -b- NN-dimethylaminoethylmethacrylate)

Sample #: **P16035G0-NIPAMDMAEMA**

Structure:

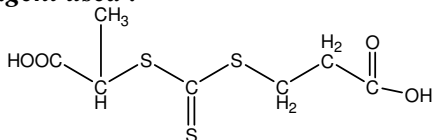


Composition:

Mn x 10 ³ PNIPAM-b-NNDMAEMA	PDI
1.0-b-42.0	1.4

Synthesis Procedure: The polymer was synthesized by RAFT process.

RAFT reagent used :



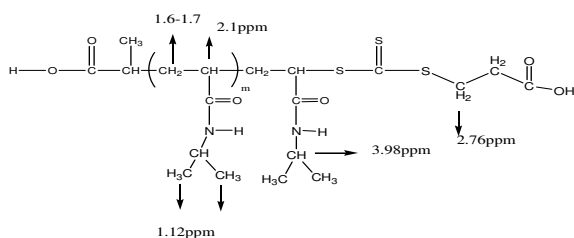
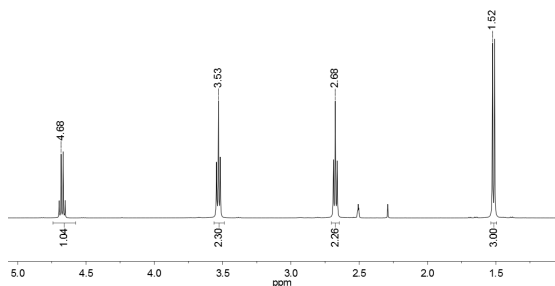
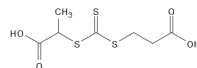
Characterization:

The polymer was characterized by ¹H NMR.

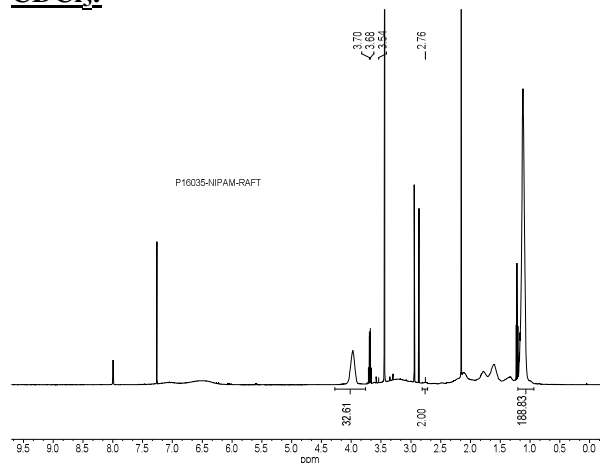
Solubility: The polymer is soluble in THF, DMF, Acetone.

¹H NMR spectrum of the RAFT reagent:

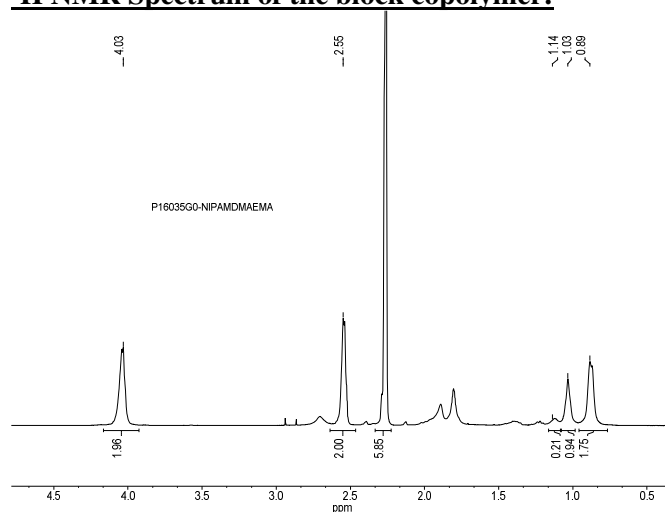
¹H NMR (500MHz, DMSO-d6): P20260A-RAFT



¹H NMR spectrum of the PNIPAM-Macroinitiator in CDCl₃:



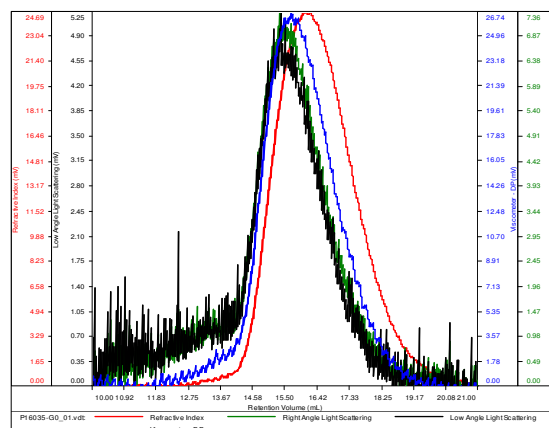
¹H NMR Spectrum of the block copolymer:



SEC elugram of the block copolymer:

P16035G0-NIPAMDMAEMA

Conc (mg/mL)	3.1121
dn/dc (mL/g)	0.0900
Method	PS80k May 25 2016-0000.vcm
Solvent	DMF w 0.023M LiBr
Column	PSS



Sample	Mn	Mw	Mp	Mw/Mn	IV
P16035-G0_01.vdt	43,703	67,072	62,587	1.535	0.2311