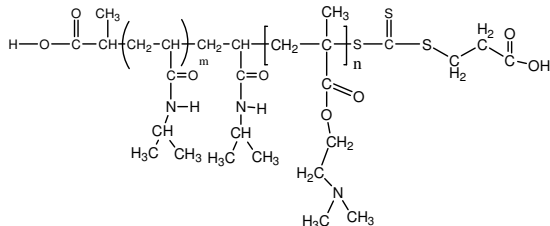


Sample Name:

Poly(N-isopropylacrylamide -b- N,N-dimethylaminoethylmethacrylate)

Sample #: **P16035A-7-NIPAMDMAEMA**

Structure:



Composition:

Mn x 10 ³ PNIPAM-b-NNDMAEMA	PDI
8.0-b-1.0	1.3

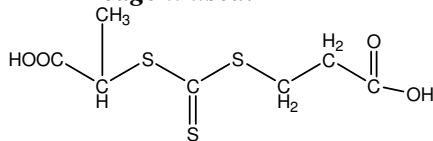
Synthesis Procedure: The polymer was synthesized by RAFT process

Characterization:

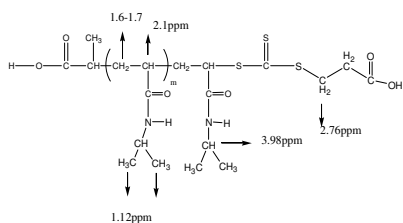
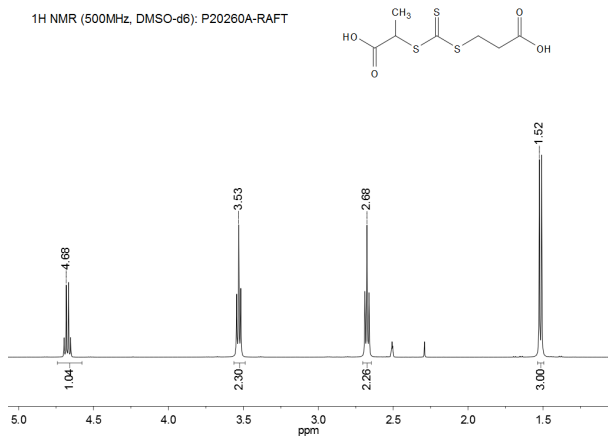
The polymer was characterized by SEC and ¹H NMR

Solubility: The polymer is soluble in THF, DMF, Acetone.

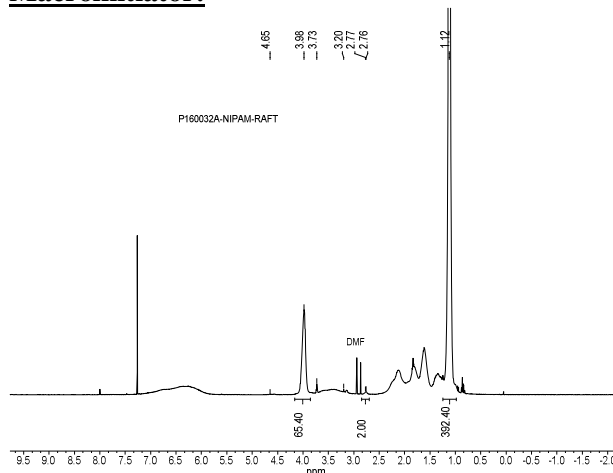
RAFT reagent used:



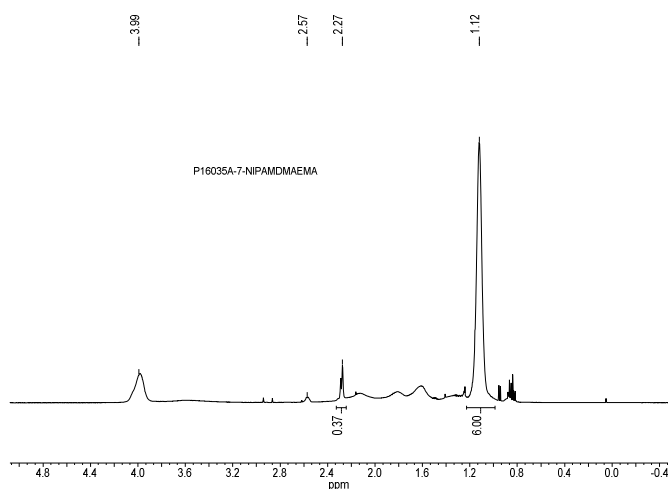
¹H NMR spectrum of the RAFT reagent:



**¹H NMR Spectrum of PNIPAMRAFT
Macroinitiator:**

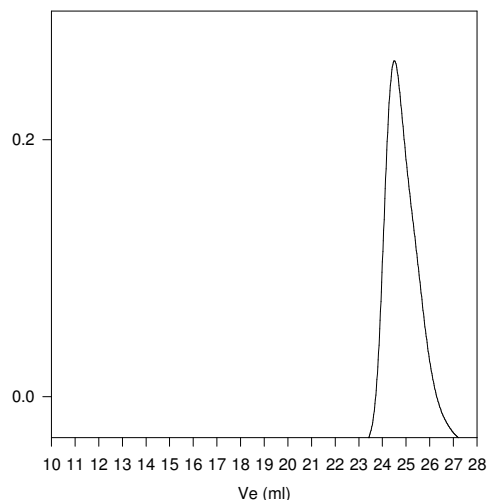


¹H NMR Spectrum of the block copolymer:



SEC elugram of the block copolymer:

P16035A-7- NIPAMDMAEMA



Size Exclusion Chromatography of Poly(NIPAM-b-DMAEMA)

Mn 8,000 Mw/Mn 1.3

PNIPAM-b-MMA: Mn 8,000-b-1,000 Mw/Mn 1.3