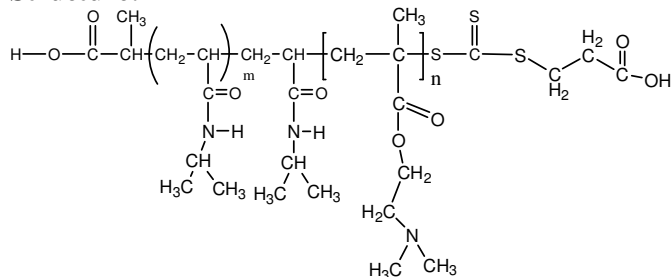


Sample Name:

Poly(N-isopropylacrylamide -b- NN-dimethylaminoethylmethacrylate)

Sample #: **P16035Z-NIPAMDMAEMA**

Structure:



Composition:

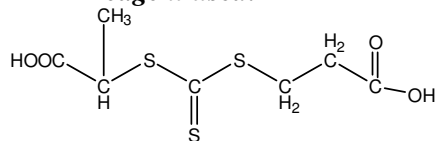
Mn x 10 ³	PDI
PNIPAM-b-NNDMAEMA	
2.0-b-17.0	1.8

Synthesis Procedure: The polymer was synthesized by RAFT process.

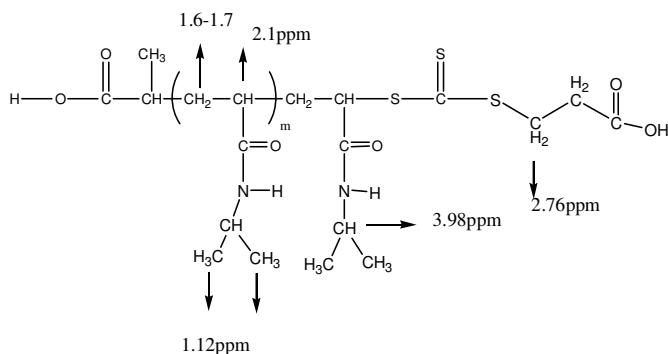
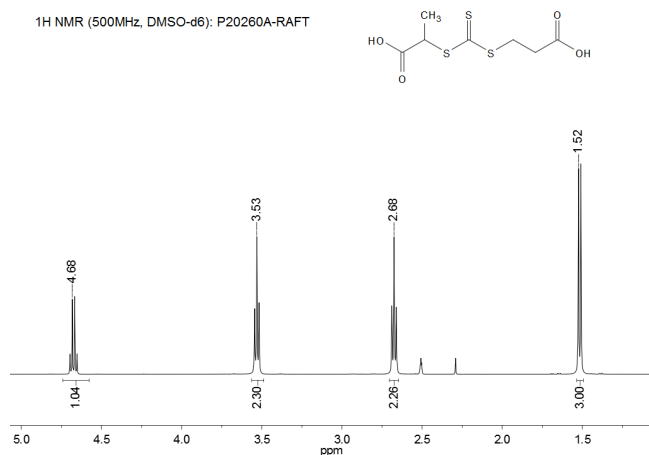
Characterization: The polymer was characterized by ¹H NMR and SEC.

Solubility: The polymer is soluble in THF, DMF, Acetone.

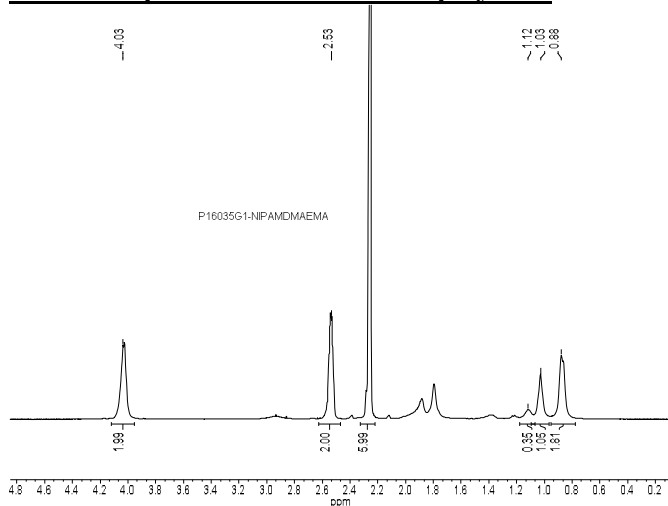
RAFT reagent used:



¹H NMR spectrum of the RAFT reagent:

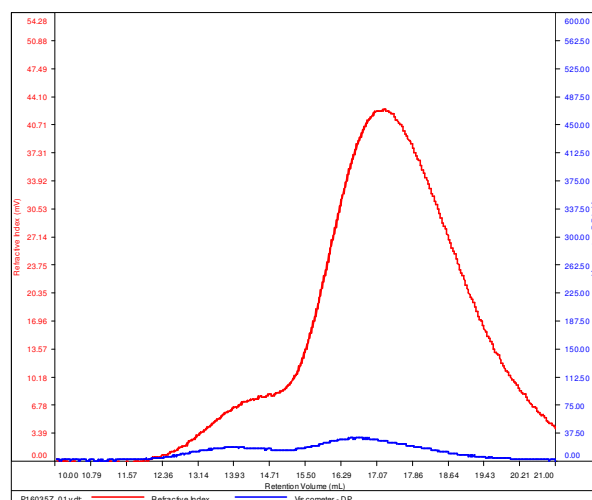


¹H NMR Spectrum of the block copolymer:



SEC elugram of the block copolymer:
P16035Z-NIPAMDMAEMA

Conc (mg/mL)	6.4219
dn/dc (mL/g)	0.0870
Method	PS80k-May-25-2016-0000.vcm
Solvent	DMF w/0.023M LiBr
Column	PSS



Sample	Mn	Mw	Mp	Mw/Mn	IV
P16035Z_01.vcl	18,633	34,988	27,537	1.878	0.1704