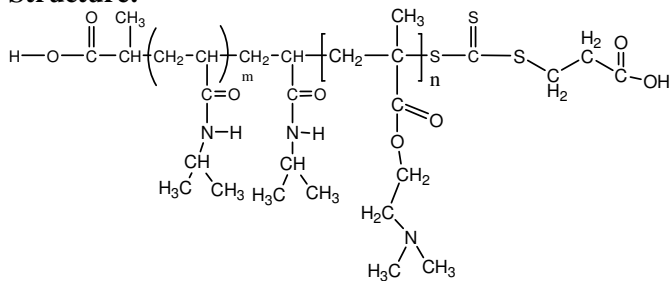


Sample Name:

Poly(N-isopropylacrylamide -b- NN-dimethylaminoethylmethacrylate)

Sample #: **P16035G5-NIPAMDMAEMA**

Structure:



Composition:

Mn x 10 ³	PDI
PNIPAM-b-NNDMAEMA	
4.0-b-52.0	2.2

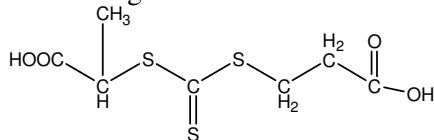
Synthesis Procedure: The polymer was synthesized by RAFT process

Characterization:

The polymer was characterized by SEC and ¹H NMR

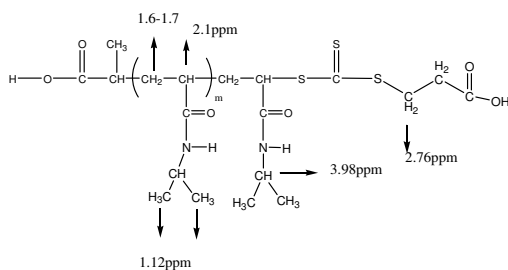
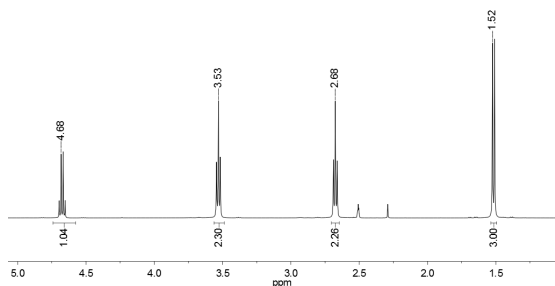
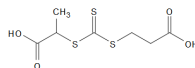
Solubility: The polymer is soluble in THF, DMF, Acetone.

RAFT reagent used:

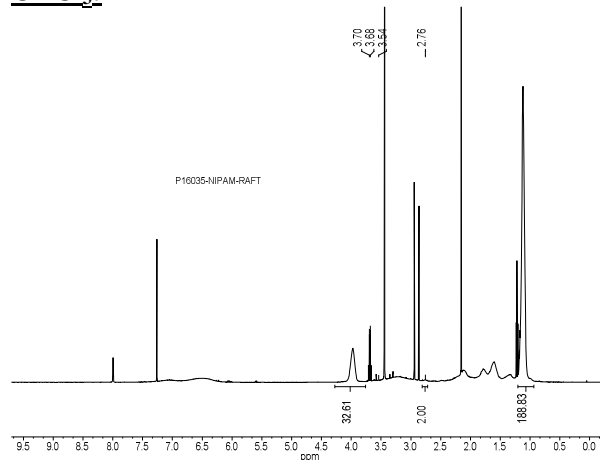


¹H NMR spectrum of the RAFT reagent:

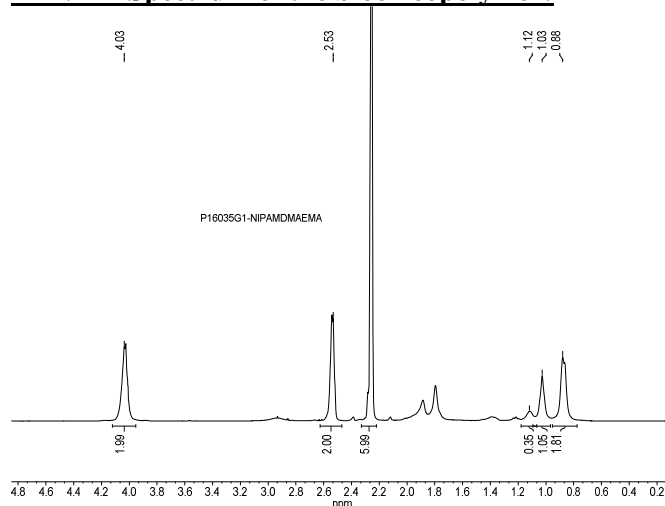
¹H NMR (500MHz, DMSO-d₆): P20260A-RAFT



¹H NMR spectrum of the PNIPAM-Macroinitiator in CDCl₃:



¹H NMR Spectrum of the block copolymer:



SEC elugram of the block copolymer:

P16035G5-NIPAMDMAEMA

Conc (mgm L)	3.0325
dn/dc (m L/g)	0.0800
Method	PSS05-May-25-2016-0000acm
Solvent	DMF w/ 0.023M LiBr
Column	PSS

