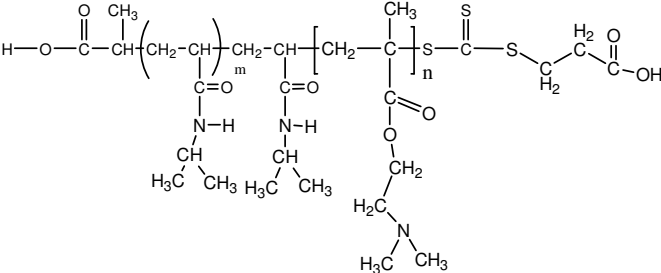


Sample Name:
Poly(N-isopropylacrylamide -b- NN-
dimethylaminoethylmethacrylate)

Sample #: P16046CF1-NIPAMDMAEMA

Structure:



Composition:

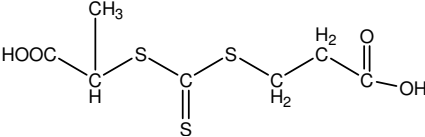
Mn x 10 ³ PNIPAM-b-NNDMAEMA	PDI
2.0-b-15.0	1.9

Synthesis Procedure: The polymer was synthesized by RAFT process

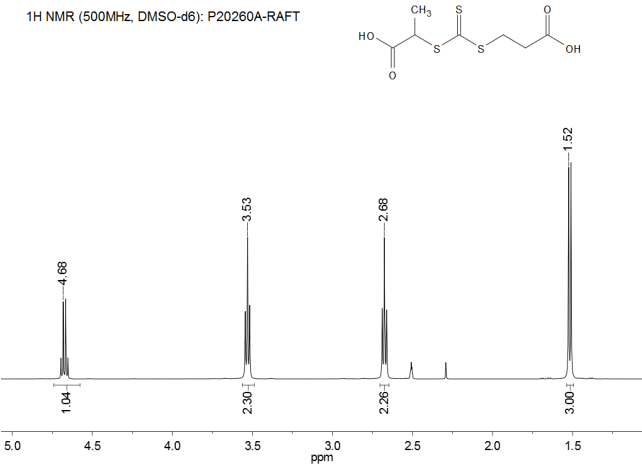
Characterization: The polymer was characterized by ¹H NMR and SEC analysis.

Solubility: The polymer is soluble in THF, DMF, Acetone.

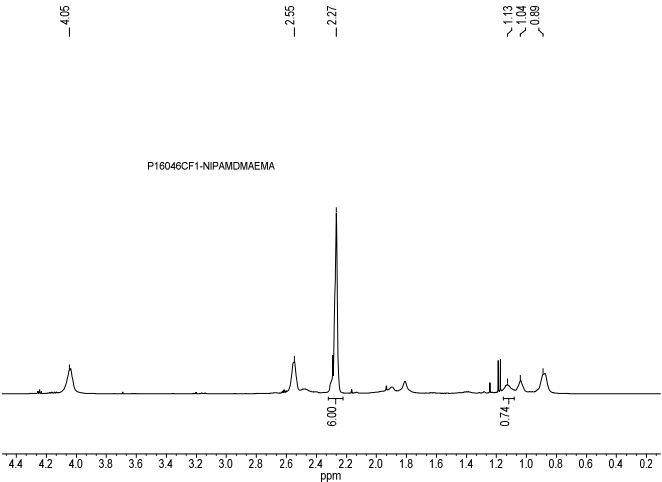
RAFT reagent used:



¹H NMR spectrum of the RAFT reagent:



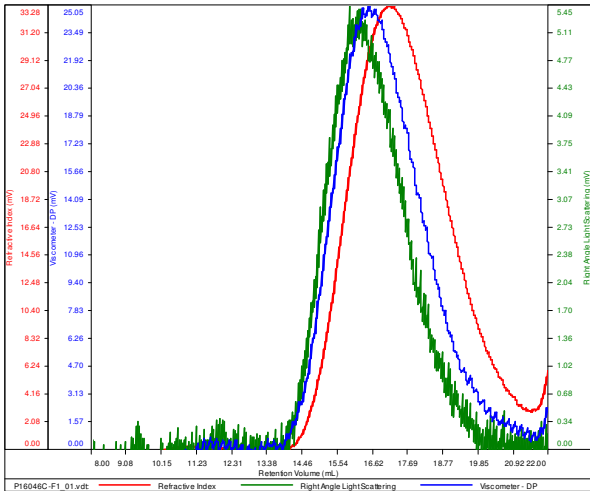
¹H NMR Spectrum of the block copolymer:



SEC elugram of the block copolymer

P16046cF1-NIPAMDMAEMA

Conc (mg/mL)	5.4674
dn/dc (mL/g)	0.0800
Method	PS80k-May-25-2016-0000.vcm
Solvent	DMF w 0.023M LiBr
Column	PSS



Sample	Mn	Mw	Mp	Mw/Mn	IV
P16046C-F1_01.vdt	17,270	32,802	31,800	1.899	0.1580