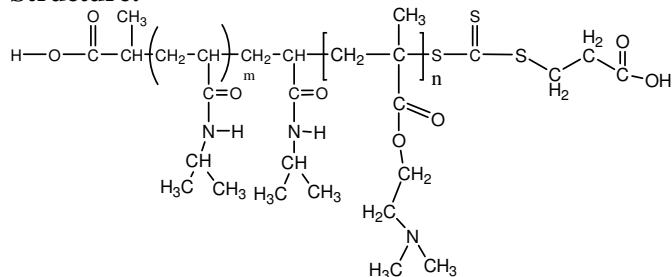


Sample Name:

**Poly(N-isopropylacrylamide -b- NN-dimethylaminoethylmethacrylate)**

Sample #: **P16046DF1-NIPAMDMAEMA**

**Structure:**



**Composition:**

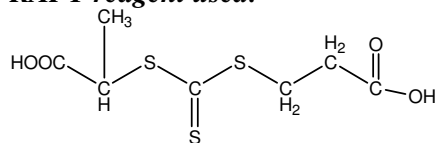
Mn x 10 <sup>3</sup> PNIPAM-b-NNDMAEMA	PDI
2.0-b-24.0	1.6

**Synthesis Procedure:** The polymer was synthesized by RAFT process

**Characterization:** The polymer was characterized by <sup>1</sup>H NMR and SEC analysis.

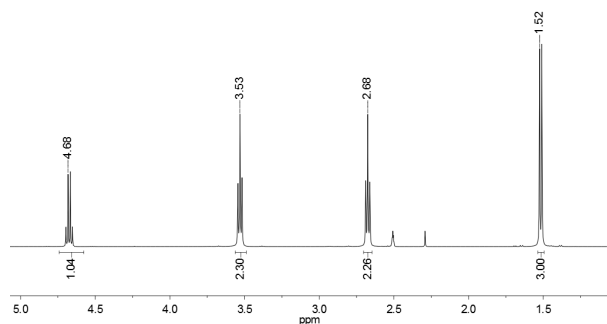
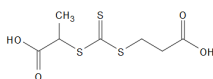
**Solubility:** The polymer is soluble in THF, DMF, Acetone.

**RAFT reagent used:**

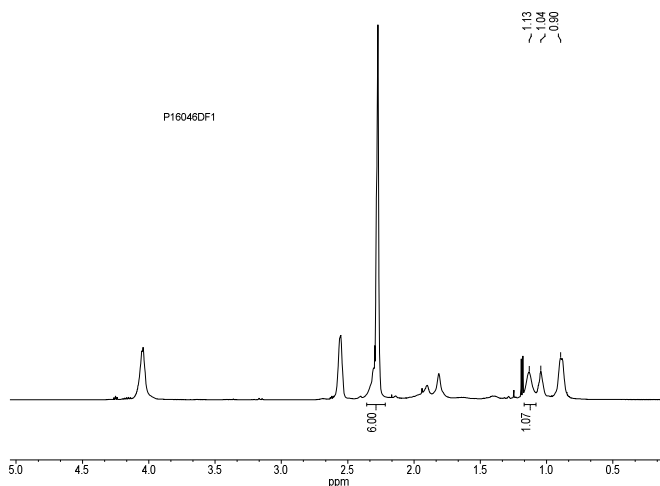


**<sup>1</sup>H NMR spectrum of the RAFT reagent:**

<sup>1</sup>H NMR (500MHz, DMSO-d6): P20260A-RAFT



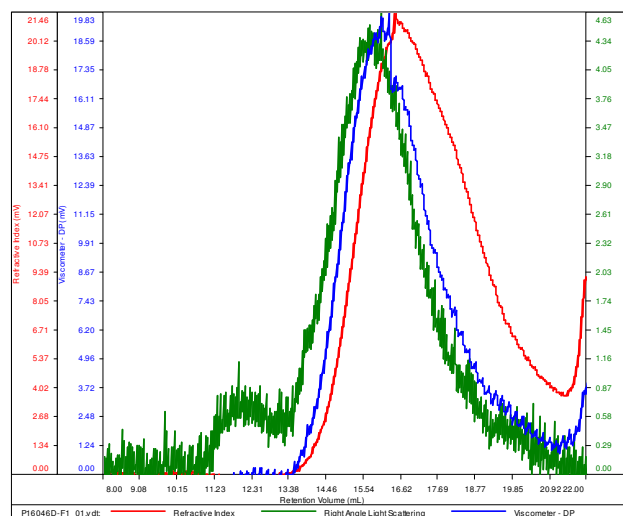
**<sup>1</sup>H NMR Spectrum of the block copolymer:**



**SEC elugram of the block copolymer**

**P16046DF1-NIPAMDMAEMA**

Conc (mg/mL)	3.7526
dn/dc (mL/g)	0.0800
Method	PS80k May-25-2016-0000.vcm
Solvent	DMF w 0.023M LiBr
Column	PSS



Sample	Mn	Mw	Mp	Mw/Mn	IV
P16046D-F1_01.vdt	25,949	43,140	44,150	1.663	0.1745