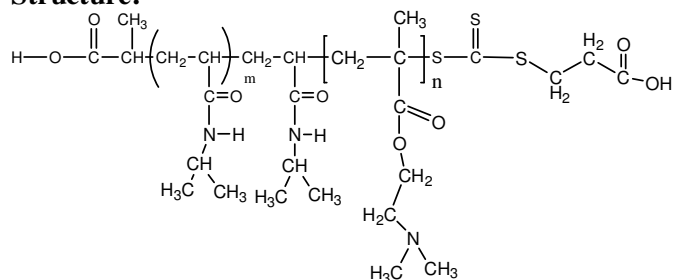


Sample Name: Poly(N-isopropylacrylamide -b- N,N-dimethylaminoethylmethacrylate)

Sample #: P16057BFX-NIPAMDMAEMA

Structure:



Composition:

Mn x 10 ³ PNIPAM-b-NNDMAEMA	PDI
8.0-b-44.5	1.96

Dp for each block : 71-b-283	
---------------------------------	--

Synthesis Procedure: Poly(N-isopropylacrylamide -b- NN-dimethylaminoethylmethacrylate) was synthesized by RAFT process.

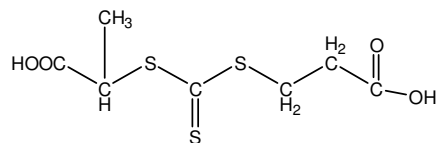
Characterization:

The molecular weight and polydispersity index (PDI) of diblock copolymer were obtained by size exclusion chromatography (SEC). The composition of the polymer was characterized by NMR.

Solubility:

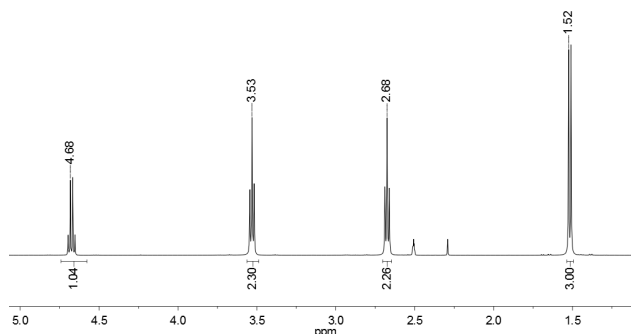
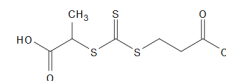
The polymer is soluble in THF, DMF, Acetone.

RAFT reagent used:

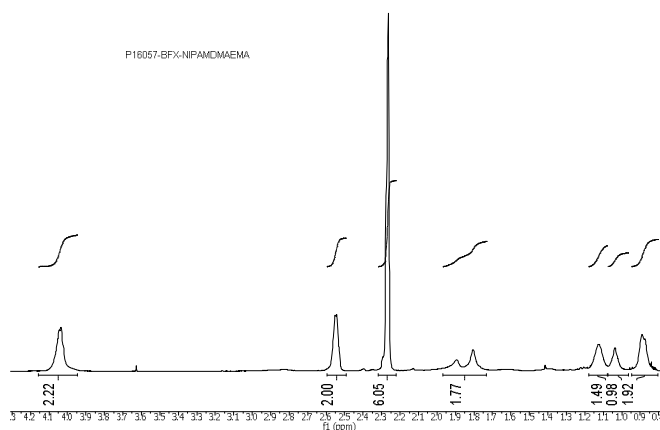


¹H NMR of the RAFT reagent:

¹H NMR (500MHz, DMSO-d₆): P20260A-RAFT



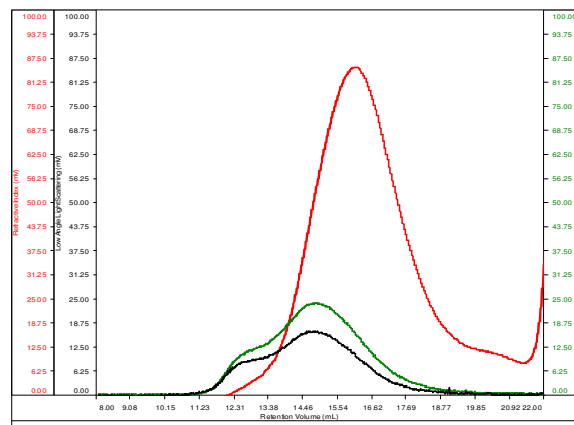
¹H NMR Spectrum of the block copolymer:



SEC of the block copolymer:

P16057BFX-NIPAMDMAEMA

Conc (mg/mL)	9.1887
dn/dc (mL/g)	0.0800
Method	PS80k August-08-2016-0000.vcm
Solvent	DMF w 0.023M LiBr
Column	PSS



Sample	Mn	Mw	Mp	Mw/Mn	IV
P16057-BFX_01.vdt	52,530	102,966	63,557	1.960	0.3138