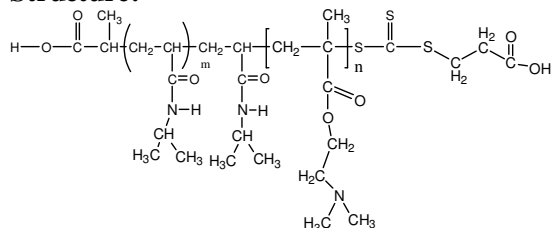


Sample Name:

**Poly(N-isopropylacrylamide -b- NN-dimethylaminoethylmethacrylate)**

Sample #: **P16046A2-NIPAMDMAEMA**

Structure:



Composition:

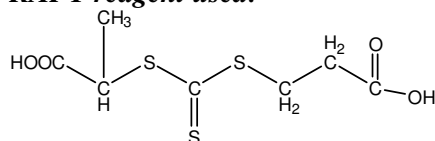
Mn x 10 <sup>3</sup> PNIPAM-b-NNDMAEMA	PDI
10.5-b-21.0	1.6

**Synthesis Procedure:** The polymer was synthesized by RAFT process

**Characterization:** BY GPC and HNMR

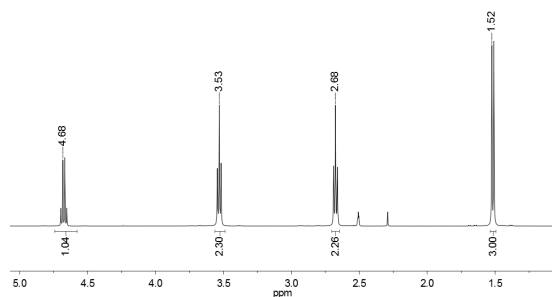
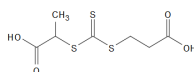
**Solubility:** The polymer is soluble in THF, DMF, Acetone.

**RAFT reagent used:**



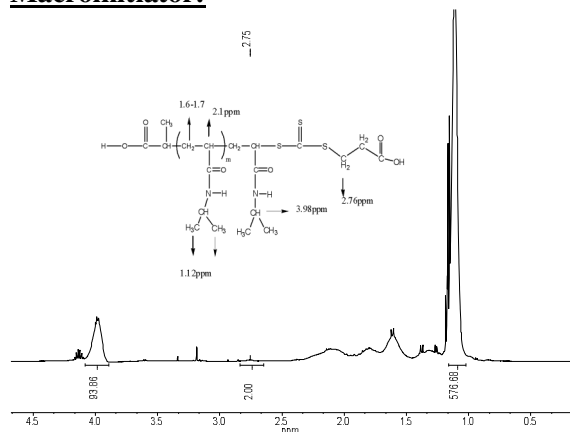
**<sup>1</sup>H NMR spectrum of the RAFT reagent:**

<sup>1</sup>H NMR (500MHz, DMSO-d<sub>6</sub>): P20260A-RAFT

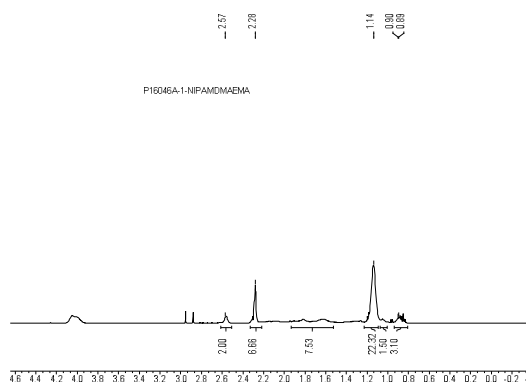


**<sup>1</sup>H NMR Spectrum of PNIPAM-RAFT**

**Macroinitiator:**

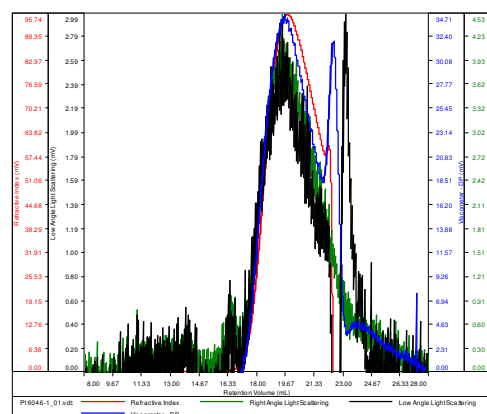


**<sup>1</sup>H NMR Spectrum of the block copolymer:**



**P16046-1-NIPAM**

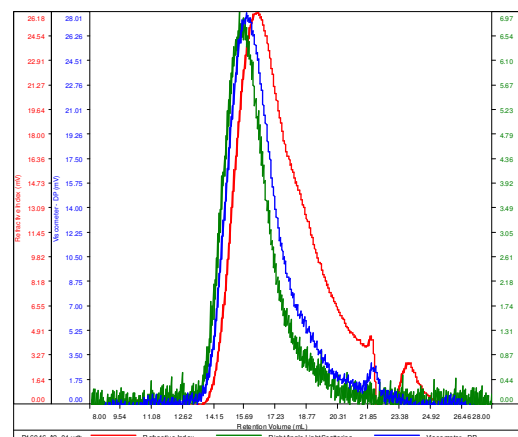
Conc (mg/mL)	15.3592
dn/dc (mL/g)	0.0770
Method	PS80k-May-25-2016-0000.vcm
Solvent	DMF w 0.023M LiBr
Column	PSS



Sample	Mn	Mw	Mp	Mw/Mn	IV
P16046-1_01.vcl	10,502	10,815	10,602	1.030	0.0785

**P16046A-2-NIPAM-DMAEMA**

Conc (mg/mL)	4.0717
dn/dc (mL/g)	0.0800
Method	PS80k-May-25-2016-0000.vcm
Solvent	DMF w 0.023M LiBr
Column	PSS



Sample	Mn	Mw	Mp	Mw/Mn	IV
P16046A-2_01.vcl	31,506	50,716	51,221	1.610	0.2108