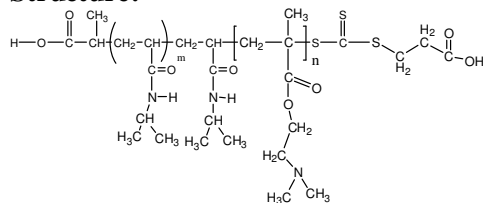


Sample Name:

Poly(N-isopropylacrylamide -b- NN-dimethylaminoethylmethacrylate)

Sample #: **P16046A1-NIPAMDMAEMA**

Structure:



Composition:

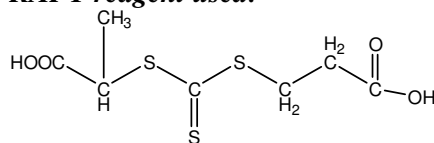
Mn x 10 ³ PNIPAM-b-NNDMAEMA	PDI
10.5-b-4.0	2.65

Synthesis Procedure: The polymer was synthesized by RAFT process

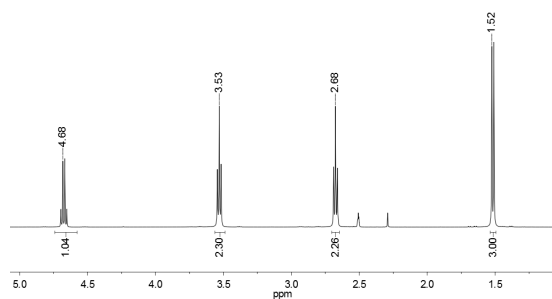
Characterization: The polymer was synthesized by SEC and ¹H NMR

Solubility: The polymer is soluble in THF, DMF, Acetone.

RAFT reagent used:

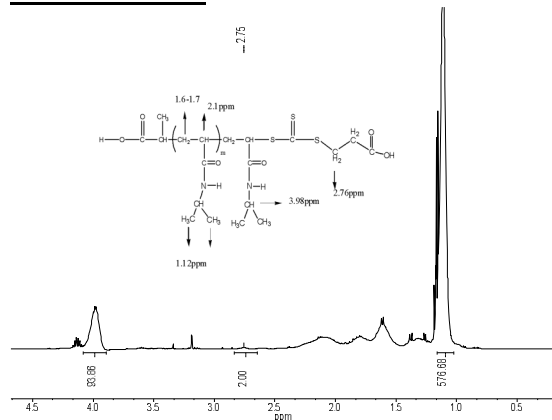


¹H NMR spectrum of the RAFT reagent:

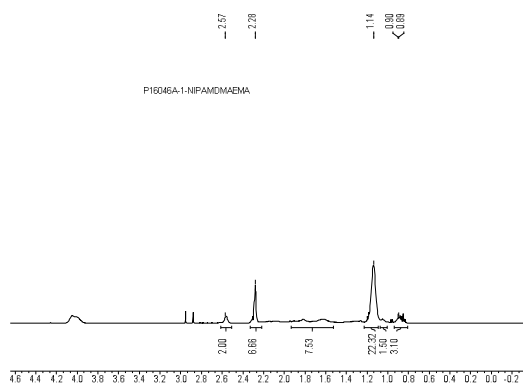


¹H NMR Spectrum of PNIPAM-RAFT

Macroinitiator:

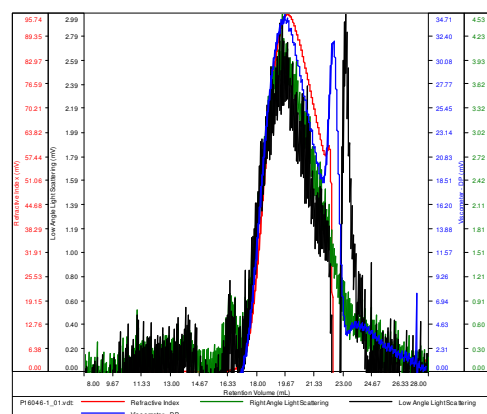


¹H NMR Spectrum of the block copolymer:



P16046-1-NIPAM

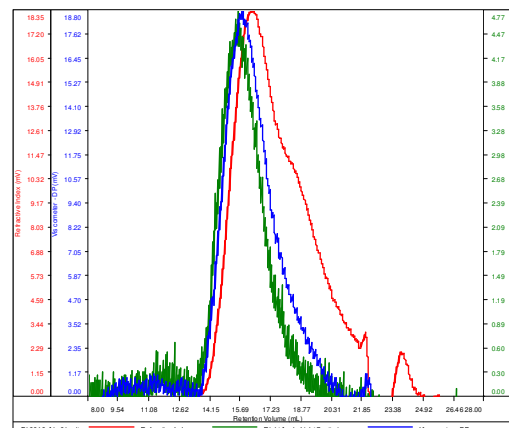
Conc (mg/mL)	15.3592
dn/dc (mL/g)	0.0770
Method	PS80k-May-25-2016-0000.vcm
Solvent	DMF w 0.023M LiBr
Column	PSS



Sample	Mn	Mw	Mp	Mw/Mn	IV
P16046-1_01.vcl	10,502	10,815	10,602	1.030	0.0785

P16046A-1-NIPAM-DMAEMA

Conc (mg/mL)	2.9520
dn/dc (mL/g)	0.0880
Method	PS80k-May-25-2016-0000.vcm
Solvent	DMF w 0.023M LiBr
Column	PSS



Sample	Mn	Mw	Mp	Mw/Mn	IV
P16046-A1_01.vcl	14,352	38,271	44,127	2.667	0.1997