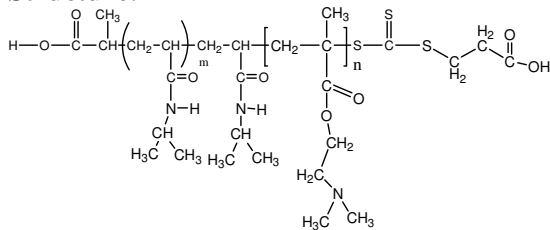


Sample Name:

Poly(N-isopropylacrylamide -b- NN-dimethylaminoethylmethacrylate)

Sample #: **P16046A4-NIPAMDMAEMA**

Structure:



Composition:

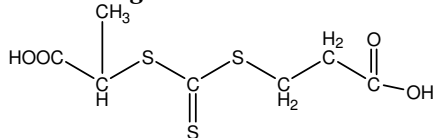
Mn x 10 ³ PNIPAM-b-NNDMAEMA	PDI
4.5-b-18.0	1.6

Synthesis Procedure: The polymer was synthesized by RAFT process

Characterization: The polymer was characterized by SEC and ¹H NMR

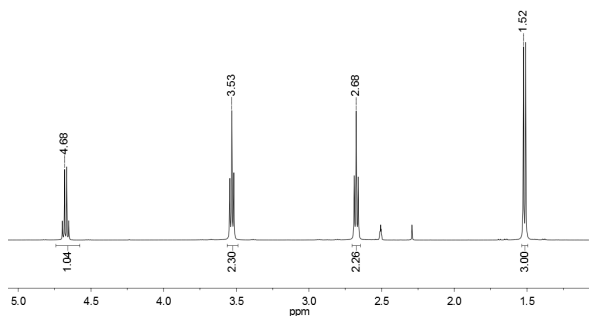
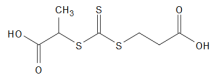
Solubility: The polymer is soluble in THF, DMF, Acetone.

RAFT reagent used:

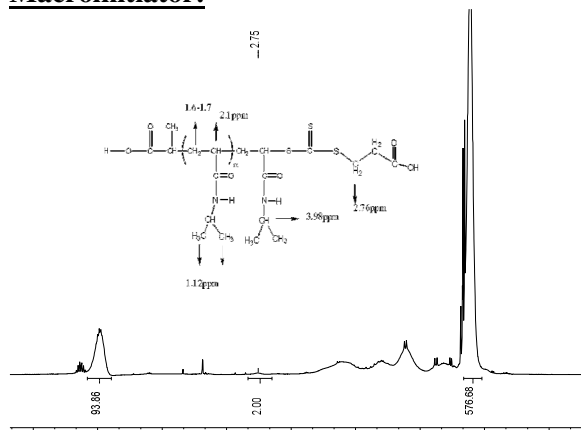


¹H NMR spectrum of the RAFT reagent:

¹H NMR (500MHz, DMSO-d₆): P20260A-RAFT



¹H NMR Spectrum of PNIPAM-RAFT Macroinitiator:



¹H NMR Spectrum of the block copolymer:

