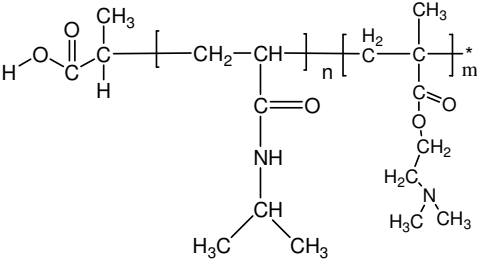


Sample Name:  
Poly(N-isopropylacrylamide -b- NN-  
dimethylaminoethylmethacrylate)

Sample #: P19999-NIPAMDMAEMA

Structure:



Composition:

Mn x 10 <sup>3</sup> PNIPAM-b-NNDMAEMA	PDI
42.0-b-128.0	2.3

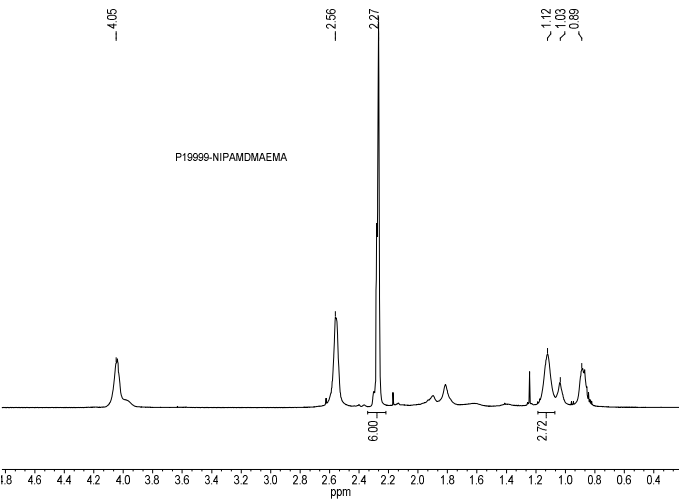
Synthesis Procedure: The polymer was synthesized by ATRP process.

Characterization:

The polymer was characterized by SEC and <sup>1</sup>H NMR.

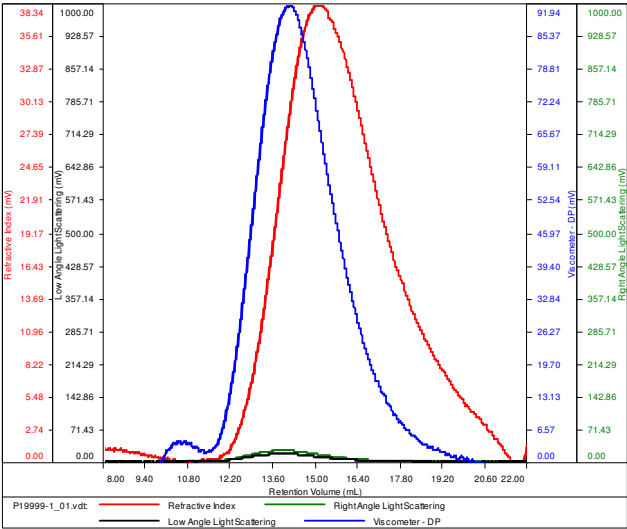
Solubility: The polymer is soluble in THF, DMF, Acetone.

<sup>1</sup>H NMR Spectrum of the block copolymer:



SEC elugram of the block copolymer:  
P19999-1

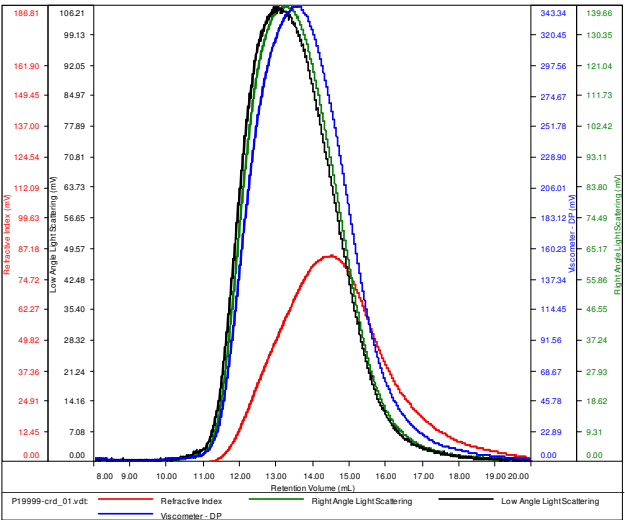
Conc (mg/mL)	7.6902
dn/dc (mL/g)	0.0770
Method	PS80k-May-25-2016-0000.vcm
Solvent	DMF w 0.023M LiBr
Column	PSS



Sample	Mn	Mw	Mp	Mw/Mn	IV
P19999-1_01.vdt	42,226	137,744	114,850	3.262	0.4224

Sample ID:P19999-NIPAMDMAEMA

Conc (mg/mL)	12.3656
dn/dc (mL/g)	0.0870
Method	PS80k-May-25-2016-0000.vcm
Solvent	DMF w 0.023M LiBr
Column	PSS



Sample	Mn	Mw	Mp	Mw/Mn	IV
P19999-cr01.vdt	169,431	392,869	287,589	2.319	0.9410