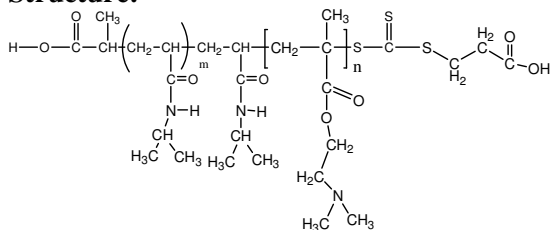


Sample Name:

Poly(N-isopropylacrylamide -b- NN-dimethylaminoethylmethacrylate)

Sample #: **P19978-NIPAMDMAEMA**

Structure:



Composition:

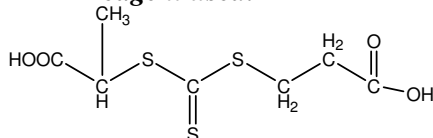
Mn x 10 ³ NIPAM-b-NNDMAEMA	PDI
3.0-b-28.0	1.9

Synthesis Procedure: The polymer was synthesized by RAFT process

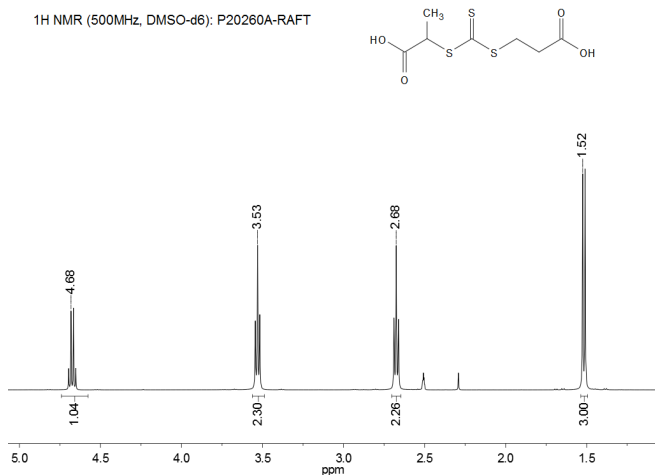
Characterization: The polymer was characterized by SEC and ¹H NMR

Solubility: The polymer is soluble in THF, DMF, Acetone.

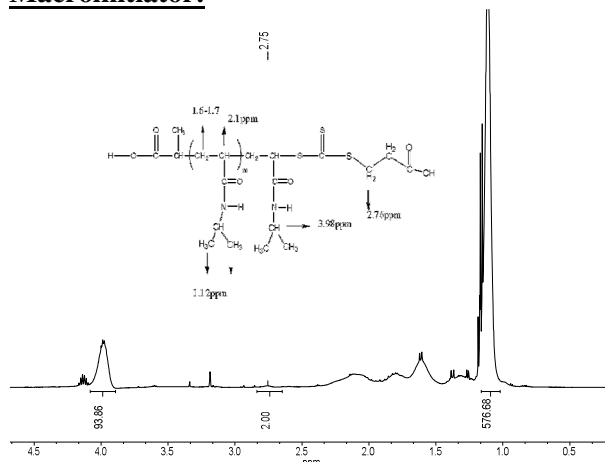
RAFT reagent used:



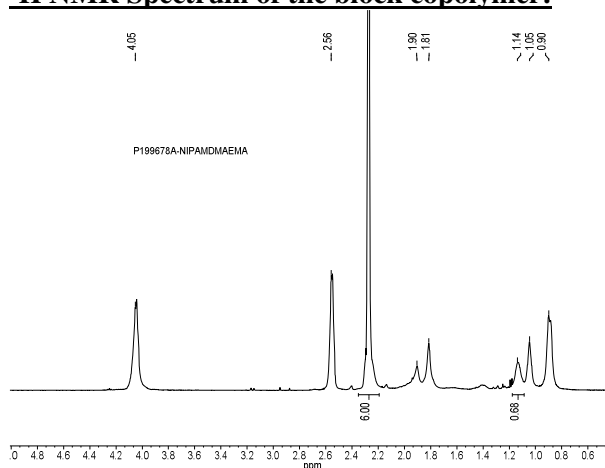
¹H NMR spectrum of the RAFT reagent:



¹H NMR Spectrum of PNIPAM-RAFT Macroinitiator:



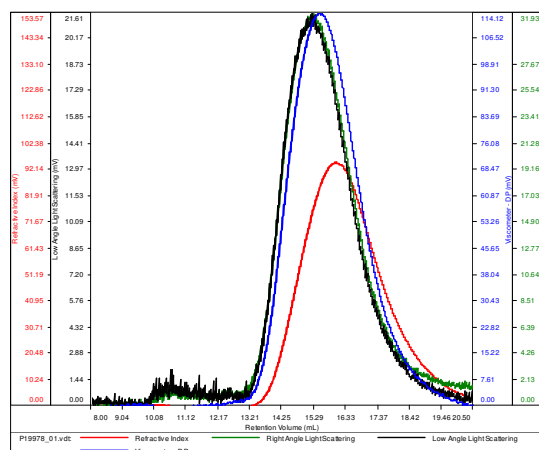
¹H NMR Spectrum of the block copolymer:



SEC elugram of the block copolymer:

P19978

Conc (mg/mL)	13.0258
dn/dc (mL/g)	0.0800
Method	PS80k May 25-2016-0000.vcm
Solvent	DMF w/0.023M LiBr
Column	PSS



Sample	Mn	Mw	Mp	Mw/Mn	IV
P19978_01.vcl	58,922	81,782	70,741	1.388	0.2592