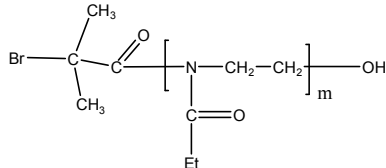


Sample Name:
Bromo end Functionalized Poly(2-ethyl-2-Oxazoline)

Sample #: **P40161-ETOXZ-CMe₂Br**

Structure:

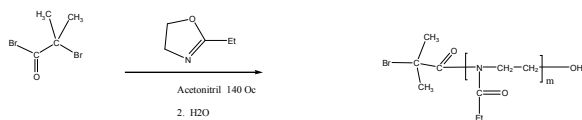


Composition:

Mn x 10 ³	PDI
6.0	1.18

Synthesis Procedure:

The polymer was synthesized by cationic process:



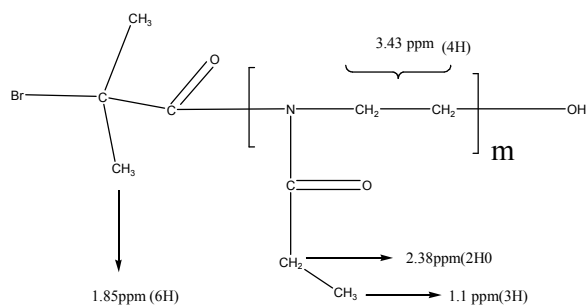
Characterization:

The polymer was characterized by ¹H NMR and SEC.

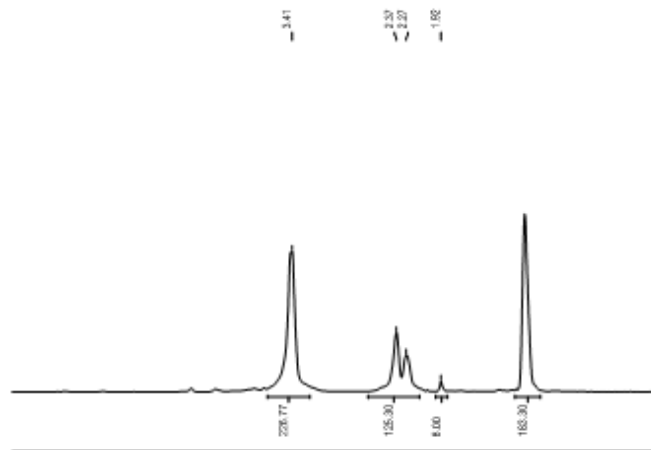
Solubility:

Polymer is soluble in water and alcohol.

Chemical Shifts in CdCl₂

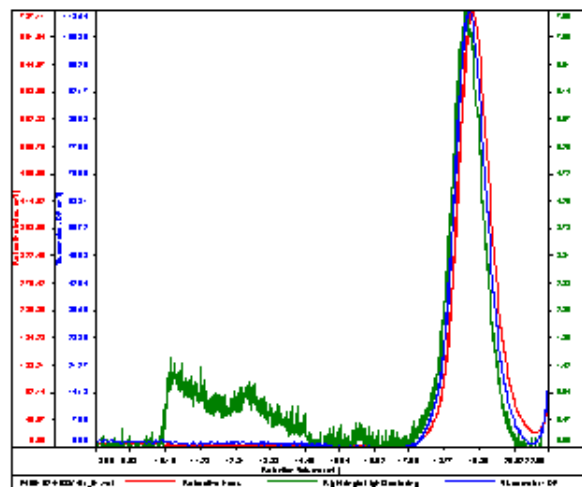


¹H NMR spectrum of the polymer:



SEC elugram of the polymer:
ETOXZ-CMe₂Br

Conc (mg/mL)	6.552
dn/dc (mL/g)	0.033
Method	PSS300 August 09 2016 0000 ucm
Solvent	DMF w/0.023M LiBr
Column	PSS



Sample	Mn	Mw	Mp	Mw/Mn	[V]
ETOXZ-Br-CH ₂ Cl	6,005	7,113	6,552	1.180	0.0485