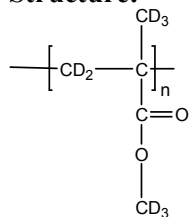


**Sample Name:** Poly (methyl methacrylate)-d<sub>8</sub> Atactic rich

**Sample #:** P40242-dPMMA

**Structure:**



**Composition:**

Mn x 10 <sup>3</sup> (Mw)	PDI
66.5 (81.0)	1.21
Tg	127 oC

**Synthesis Procedure:**

Deuterated poly (methyl methacrylate)-d<sub>8</sub> is obtained by living anionic polymerization.

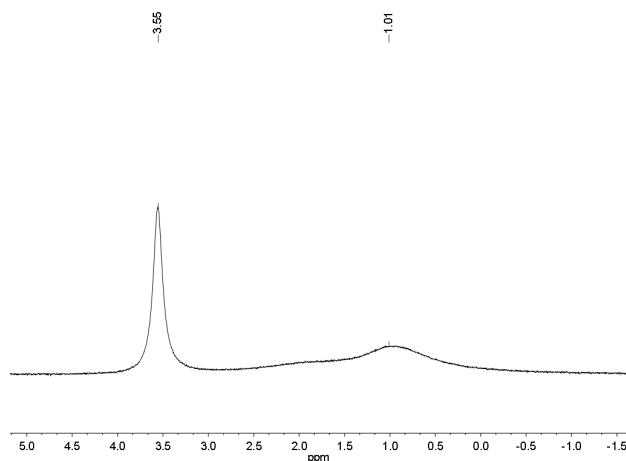
**Characterization:**

The product was characterized by size exclusion chromatography (SEC) and dNMR.

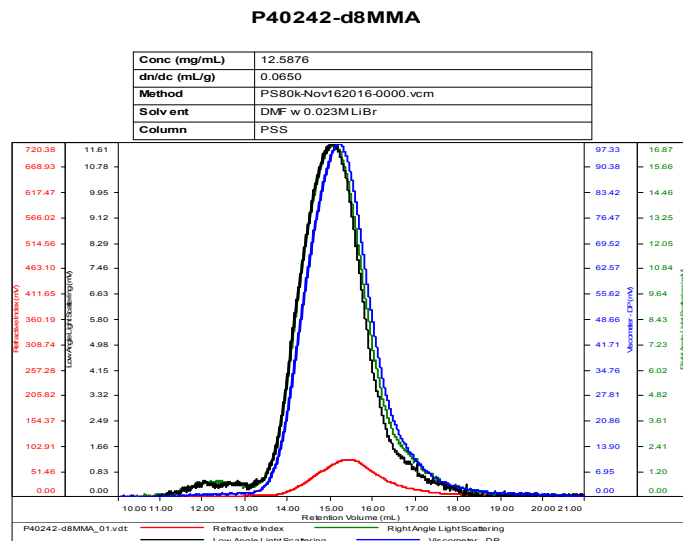
**Solubility:**

Deuterated poly (methyl methacrylate)-d<sub>8</sub> is soluble in THF, CHCl<sub>3</sub>, toluene and dioxane. The polymer precipitates from hexanes, methanol and ethanol.

**D NMR for the polymer: Atactic rich**



**SEC of Homopolymer:**



Sample	Mn	Mw	Mp	Mw/Mn	IV
P40242-d8MMA_01.vdt	66,676	80,815	70,394	1.212	0.1588

**Thermogram of the sample:**

