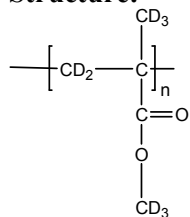


Sample Name: Poly (methyl methacrylate)-d₈
Atactic rich

Sample #: P40243A-dPMMA

Structure:



Composition:

Mn x 10 ³)	PDI
79.0	1.15
Tg	127 oC

Synthesis Procedure:

Deuterated poly (methyl methacrylate)-d₈ is obtained by living anionic polymerization.

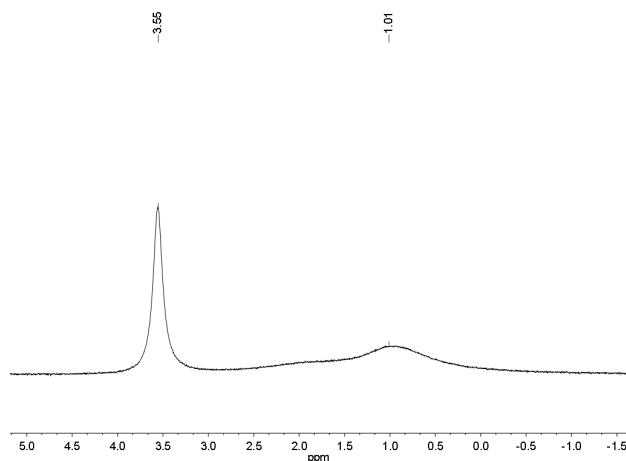
Characterization:

The product was characterized by size exclusion chromatography (SEC) and dNMR.

Solubility:

Deuterated poly (methyl methacrylate)-d₈ is soluble in THF, CHCl₃, toluene and dioxane. The polymer precipitates from hexanes, methanol and ethanol.

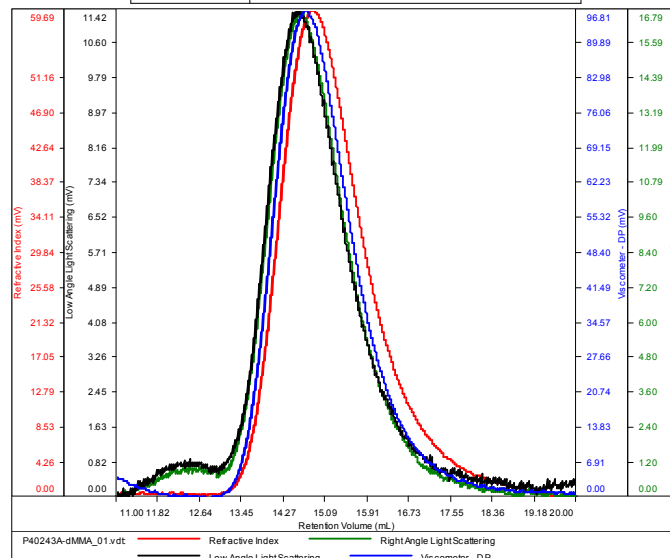
D NMR for the polymer: Atactic rich



SEC of Homopolymer:

P40243A-dPMMA

Conc (mg/mL)	11.0029
dn/dc (mL/g)	0.0650
Method	PS80k-Nov162016-0000.vcm
Solvent	DMF w 0.023M LiBr
Column	PSS



Sample	Mn	Mw	Mp	Mw/Mn	IV
P40243A-dMMA_01.vdt	78,767	90,824	91,435	1.153	0.1817

Thermogram of the sample:

