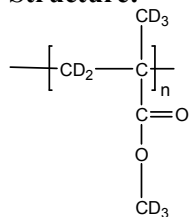


Sample Name: Poly (methyl methacrylate)-d₈
Atactic rich

Sample #: P40243B-dPMMA

Structure:



Composition:

Mn x 10 ³	PDI
29.5	1.58
Tg	109 °C

Synthesis Procedure:

Deuterated poly (methyl methacrylate)-d₈ is obtained by living anionic polymerization.

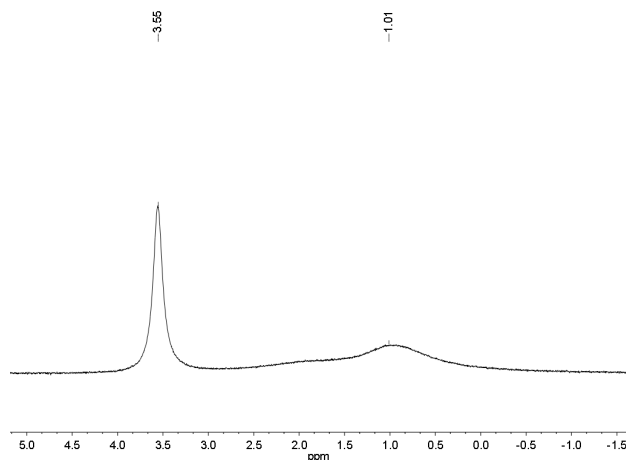
Characterization:

The product was characterized by size exclusion chromatography (SEC) and dNMR.

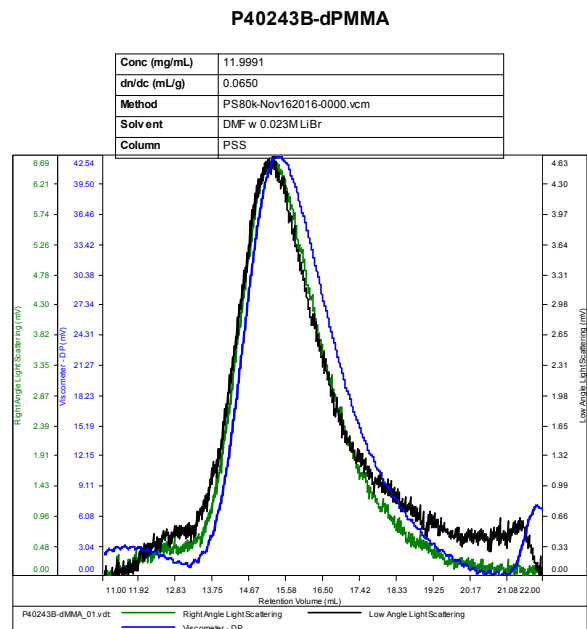
Solubility:

Deuterated poly (methyl methacrylate)-d₈ is soluble in THF, CHCl₃, toluene and dioxane. The polymer precipitates from hexanes, methanol and ethanol.

D NMR for the polymer: Atactic rich



SEC of Homopolymer:



Sample	Mn	Mw	Mp	Mw/Mn	IV
P40243B-dMMA_01.vdt	29,308	46,369	52,562	1.582	0.1102

Thermogram of the sample:

