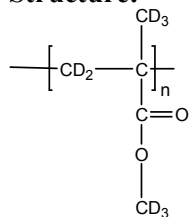


Sample Name: Poly (methyl methacrylate)-d₈ Atactic rich

Sample #: P40252-dPMMA

Structure:



Composition:

Mn x 10 ³	PDI
174.0	1.9
Tg	127 oC

Synthesis Procedure:

Deuterated poly (methyl methacrylate)-d₈ is obtained by living anionic polymerization.

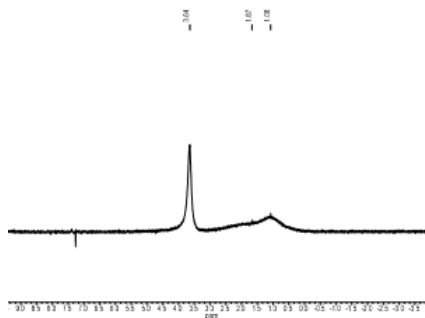
Characterization:

The product was characterized by size exclusion chromatography (SEC) and dNMR.

Solubility:

Deuterated poly (methyl methacrylate)-d₈ is soluble in THF, CHCl₃, toluene and dioxane. The polymer precipitates from hexanes, methanol and ethanol.

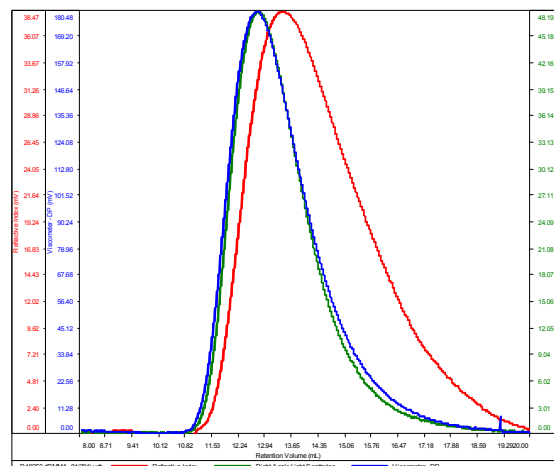
D NMR for the polymer: Atactic rich



SEC of Homopolymer:

P40252-d8MMA

Conc (mg/mL)	6.2429
dn/dc (mL/g)	0.0650
Method	PS80k-October192016-0000.vcm
Solvent	DMF w 0.023M LiBr
Column	PSS



Sample	Mn	Mw	Mp	Mw/Mn	IV
P40252-dPMMA_01(291).vdt	174.333	337.026	401.873	1.933	0.8272

Thermogram of the sample:

Sample: P40242-Poly(MMA-d)

Size: 5.7000 mg

DSC

File: P40242_d-PMMA.001

