

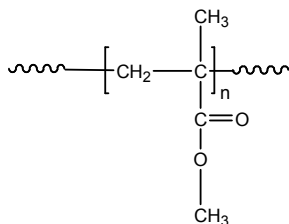
Sample Name: Poly (methyl methacrylate)

Isotactic Form

Sample #: P40227-iMMA

(iso contents over 60%)

Structure:



Composition:

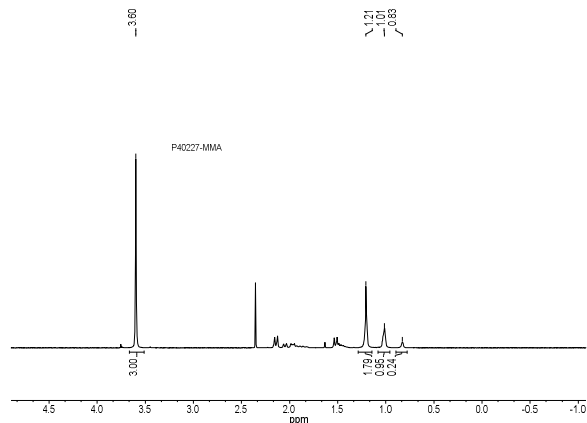
Mn x 10 ³	PDI
206.0	1.6

Synthesis Procedure: The polymer was synthesized by anionic polymerization process.

Characterization:

The product was characterized by size exclusion chromatography (SEC) and ¹H NMR.

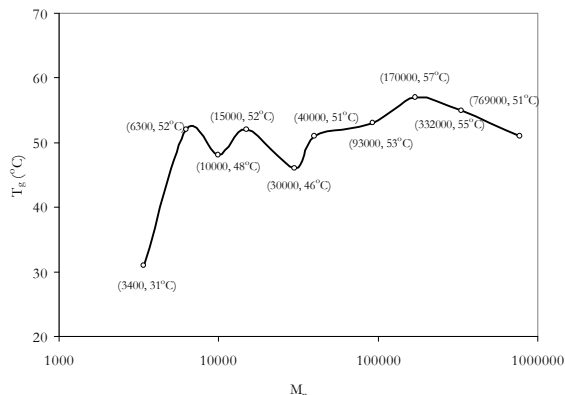
NMR of Isotactic PMMA



T_g vs MW for selected isotactic PMMA

M _n × 10 ³	T _g (°C)	M _n × 10 ³	T _g (°C)
3.4	31	40	51
6.3	52	93	53
10	48	170	57
15	52	332	55
30	46	769	51

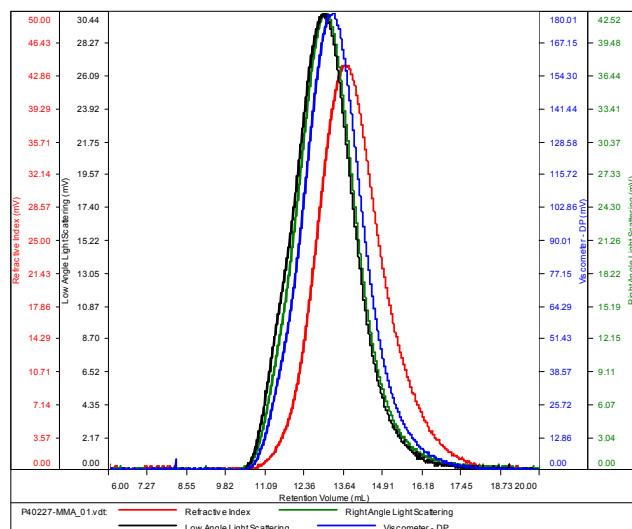
T_g of isotactic MMA as function of molecular weight



SEC of the Homopolymer:

P40227-MMA

Conc (mg/mL)	10.2072
dn/dc (mL/g)	0.0650
Method	PS80K-Nov162016-0000.vcm
Solvent	DMF w 0.023M LiBr
Column	PSS



Sample	Mn	Mw	Mp	Mw/Mn	IV
P40227-MMA_01.vdt	205,859	332,063	279,012	1.613	0.4615

References for further information:

S. K. Varshney, R. Fayt, Ph. Teyssie, US Patent 5,629,393, 1997