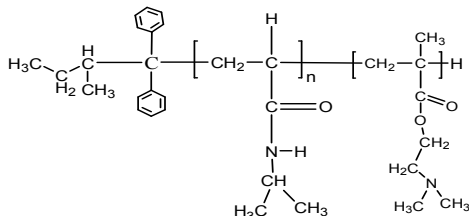


Sample Name:

Poly (N-isopropylacrylamide -b- N, N-dimethylaminoethylmethacrylate)

Sample #: P40040-NIPAMDMAEMA

Structure:

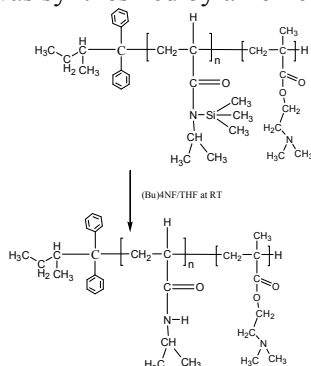


Composition:

Mn x 10 ³ PNIPAM-b-NNDMAEMA	PDI
5.5-b-60.0 (PNIPAM-TMS: 10.5) Composition from ¹ H NMR	1.2
Dp: 48-b-382.0	

Synthesis Procedure:

The polymer was synthesized by anionic process

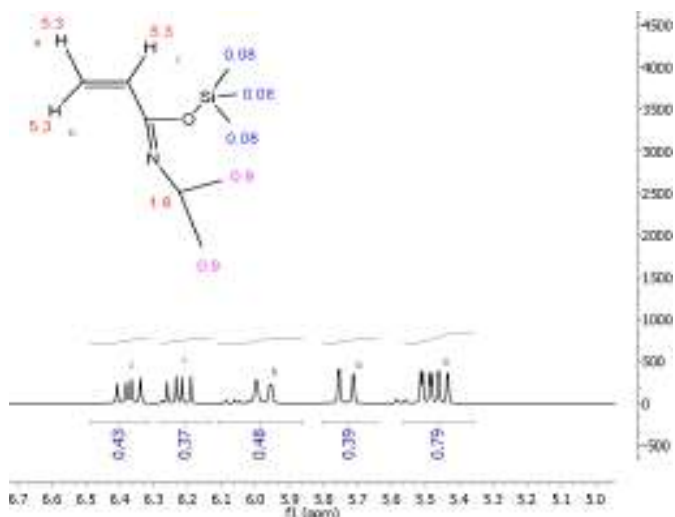
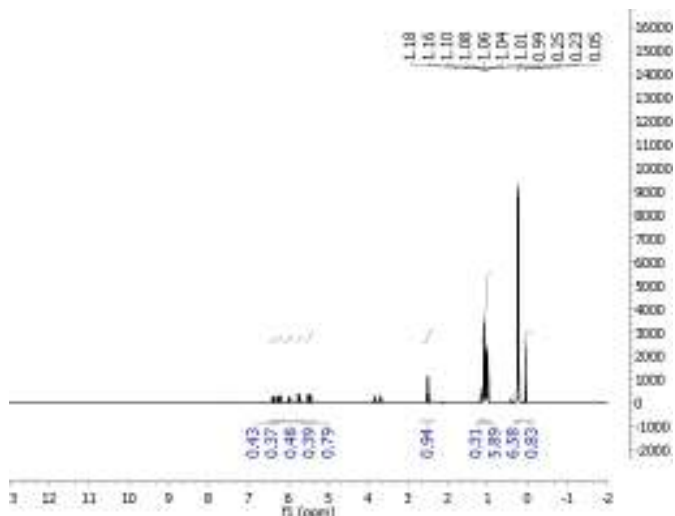
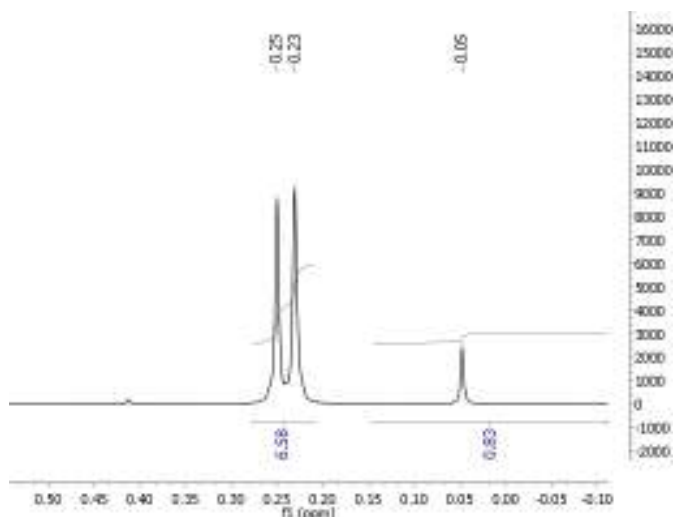
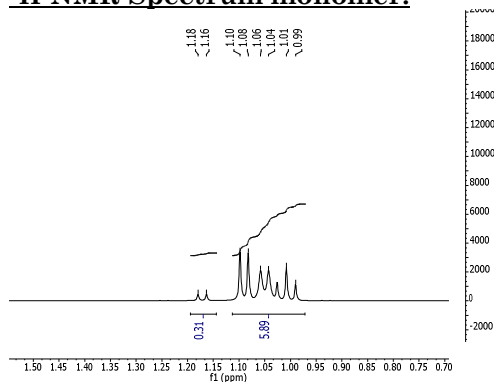


Characterization:

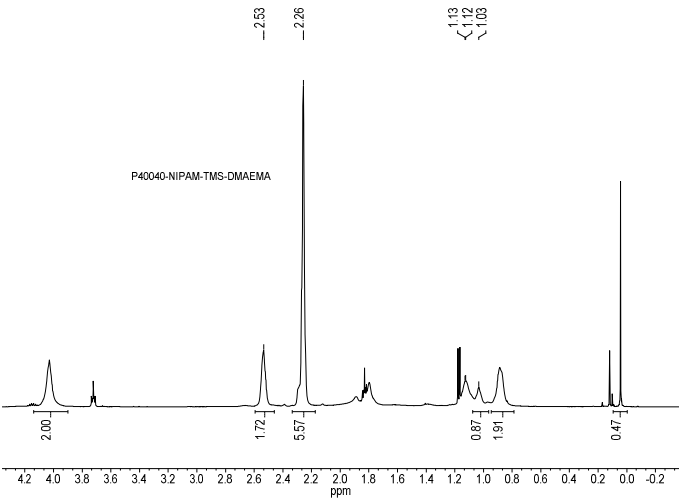
The polymer was characterized by SEC and ¹H NMR.

Solubility: The polymer is soluble in THF, DMF, and Acetone.

¹H-NMR Spectrum monomer:

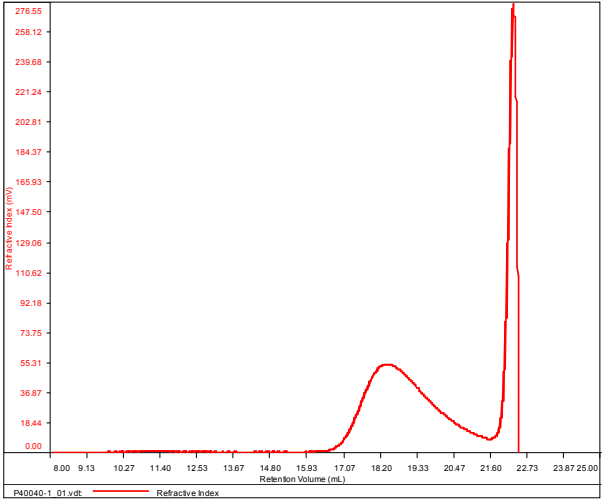


¹H NMR spectrum of the block copolymer:



SEC elugram of the copolymer:
P40040-NIPAMTMS

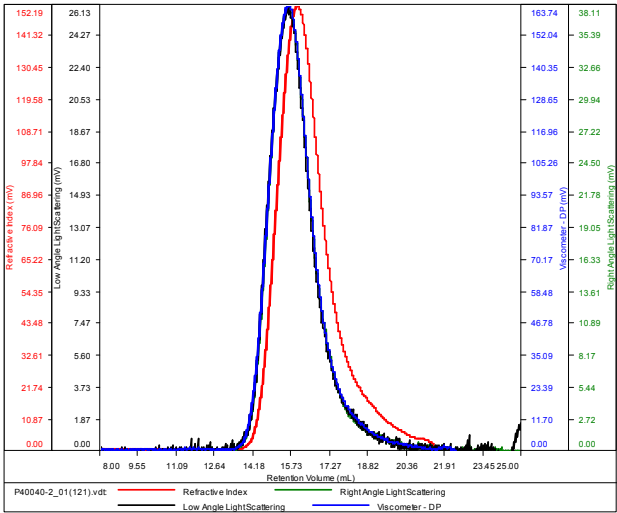
Conc (mg/mL)	5.8988
dn/dc (mL/g)	0.0650
Method	PS80k-October192016-0000.vcm
Solvent	DMF w 0.023M LiBr
Column	PSS



Sample	Mn	Mw	Mp	Mw/Mn	IV
P40040-1_01.vdt	10,625	15,779	12,278	1.485	0.0641

P40040-NIPAMTMS-NNDMAEMA

Conc (mg/mL)	15.0512
dn/dc (mL/g)	0.0650
Method	PS80k-October192016-0000.vcm
Solvent	DMF w 0.023M LiBr
Column	PSS



Sample	Mn	Mw	Mp	Mw/Mn	IV
P40040-2_01(121).vdt	70,774	84,961	85,263	1.200	0.2466