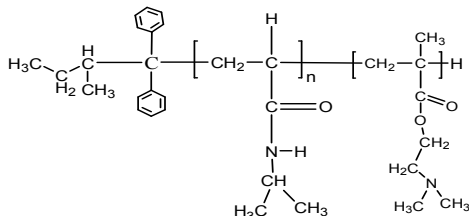


Sample Name:

Poly (N-isopropylacrylamide -b- N, N-dimethylaminoethylmethacrylate)

Sample #: P40040A-NIPAMDMAEMA

Structure:

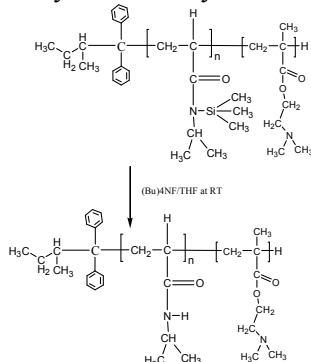


Composition:

Mn x 10 ³ PNIPAM-b-NNDMAEMA 5.5-b-73.0 (PNIPAM-TMS: 10.5) Composition from ¹ H NMR	PDI 1.25
Dp: 48-b-464	

Synthesis Procedure:

The polymer was synthesized by anionic process.



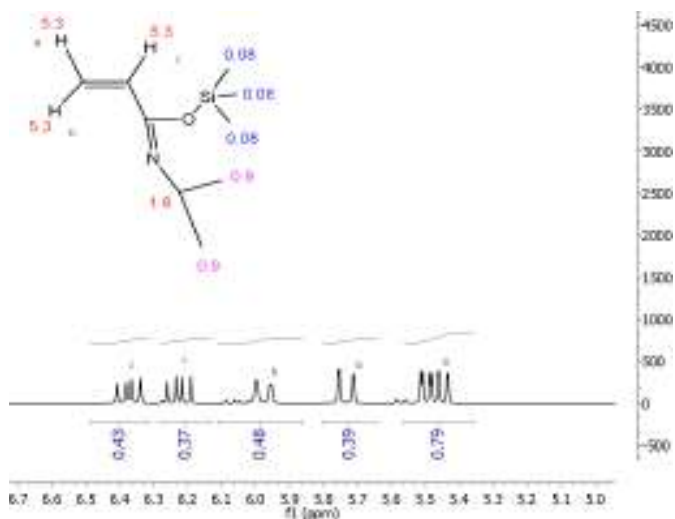
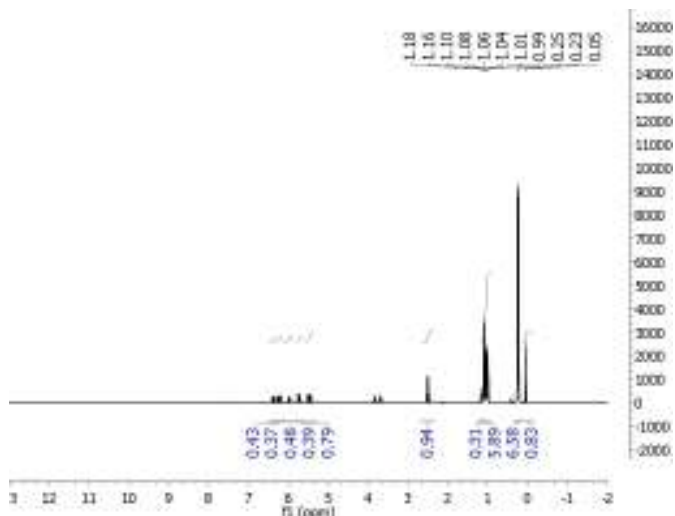
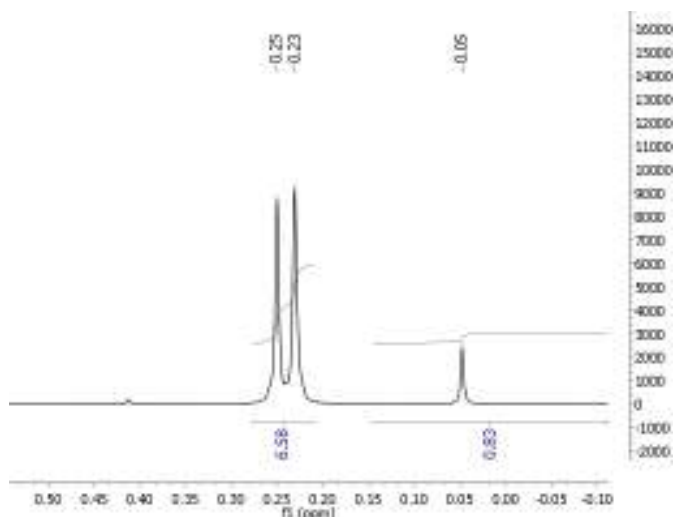
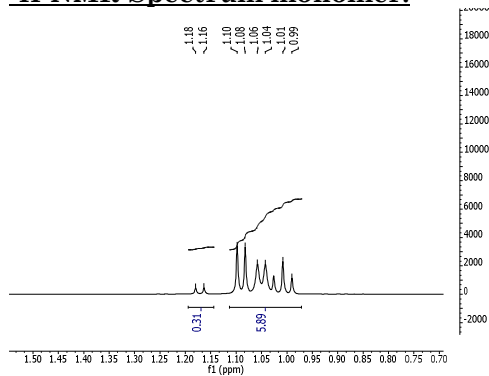
Characterization:

The polymer was characterized by SEC and ¹H NMR.

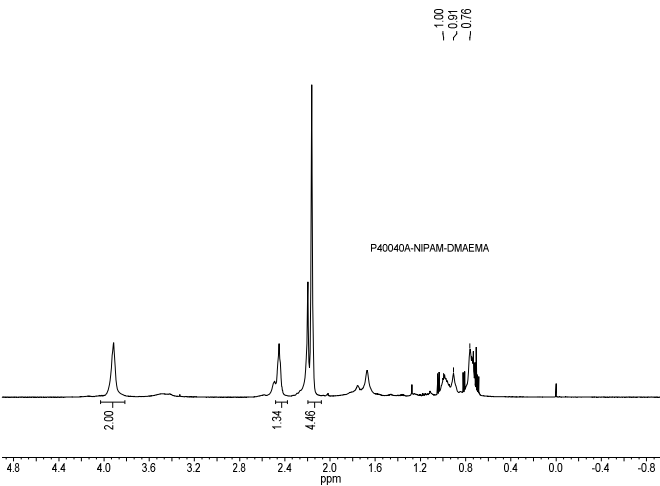
Solubility:

The polymer is soluble in THF, DMF, and Acetone.

¹H-NMR Spectrum monomer:

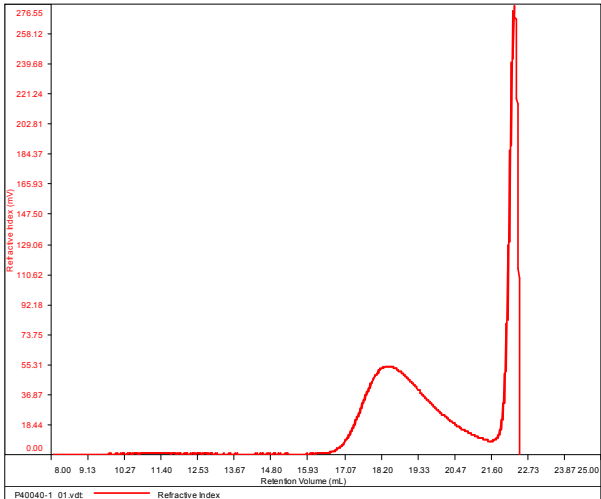


¹H NMR spectrum of the block copolymer:



SEC elugram of the copolymer:
P40040-NIPAMTMS

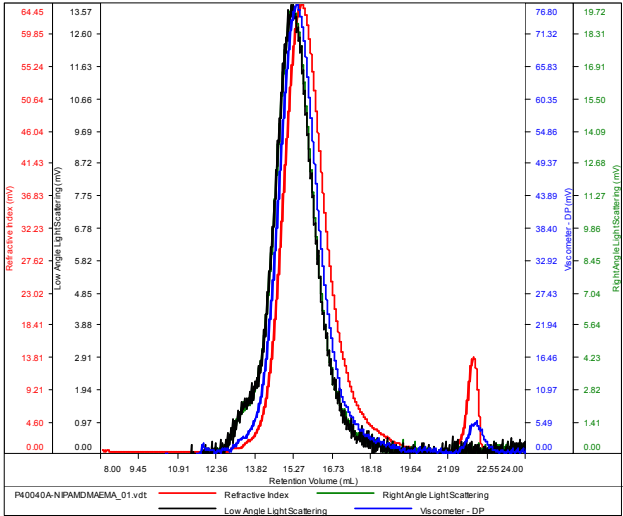
Conc (mg/mL)	5.8988
dn/dc (mL/g)	0.0650
Method	PS80k-October192016-0000.vcm
Solvent	DMF w 0.023M LiBr
Column	PSS



Sample	Mn	Mw	Mp	Mw/Mn	IV
P40040-1_01.vdt	10,625	15,779	12,278	1.485	0.0641

P40040A-NIPAMDMAEMA

Conc (mg/mL)	11.6927
dn/dc (mL/g)	0.0650
Method	PS80k_December-2016-0004.vcm
Solvent	DMF w 0.023M LiBr
Column	PSS



Sample	Mn	Mw	Mp	Mw/Mn	IV
P40040A-NIPAMDMAEMA_01.vdt	83,725	104,964	100,497	1.254	0.1327