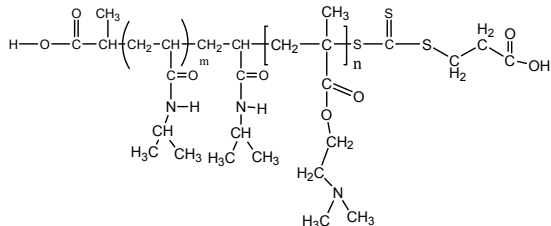


Sample Name:

Poly (N-isopropylacrylamide -b- NN-dimethylaminoethylmethacrylate)

Sample #: **P16069A4-NIPAMDMAEMA**

Structure



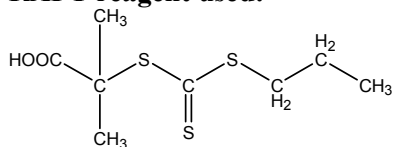
Composition:

Mn x 10 ³ PNIPAM-b-NNDMAEMA	PDI
3.5-b-25.5	1.4

Synthesis Procedure:

The polymer was synthesized by RAFT process.

RAFT reagent used:



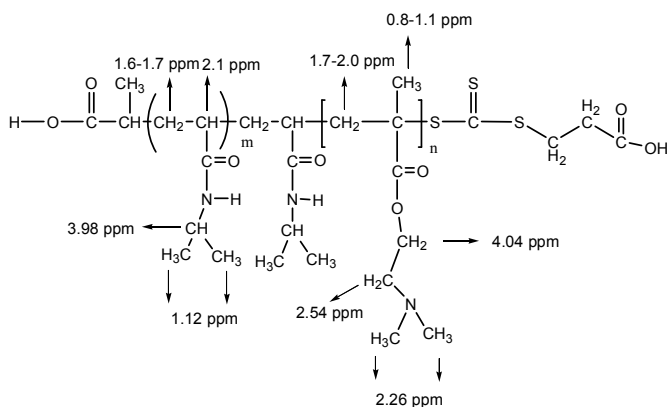
Characterization:

The polymer was characterized by size exclusion chromatography (SEC) and ¹H NMR.

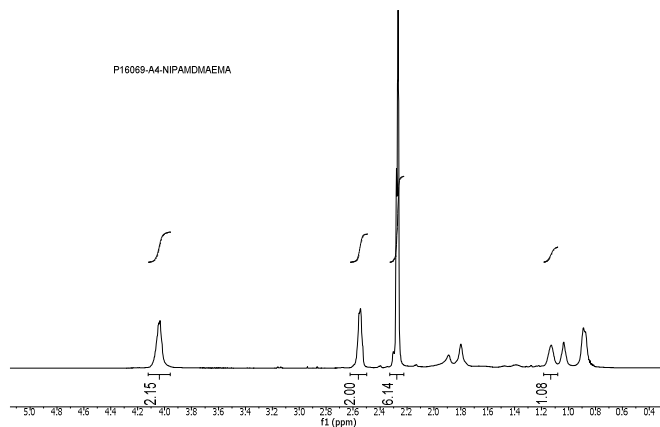
Solubility:

The polymer is soluble in THF, DMF, and Acetone.

Chemical shift of NIPAMDMAEMA copolymer



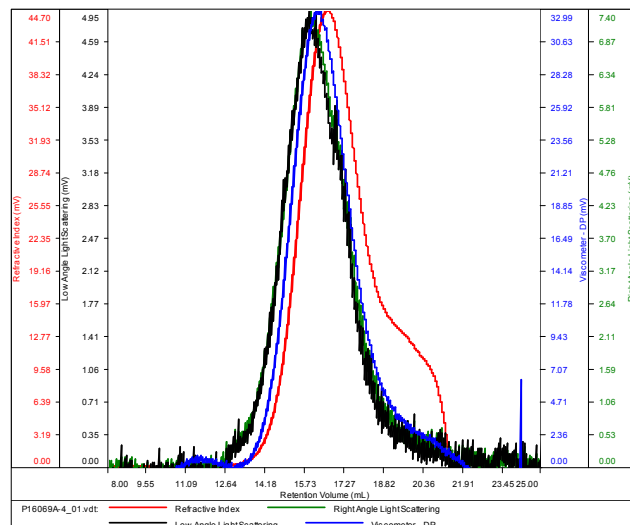
¹H NMR Spectrum of the block copolymer:



SEC elugram of the block copolymer:

P16069-A4

Conc (mg/mL)	10.9151
dn/dc (mL/g)	0.0800
Method	PS80k_December-2016-0004.vcm
Solvent	DMF w/0.023M LiBr
Column	PSS



Sample	Mn	Mw	Mp	Mw/Mn	IV
P16069A-4_01.vdt	29,043	41,762	38,031	1.438	0.0941