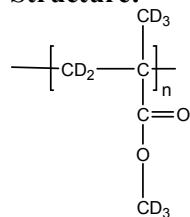


**Sample Name:** Poly (methyl methacrylate)-d<sub>8</sub>  
**Atactic rich**

**Sample #:** P40241-dPMMA

**Structure:**



**Composition:**

Mn x 10 <sup>3</sup>	PDI
52.0	1.16
Tg	123 °C

**Synthesis Procedure:**

Deuterated poly (methyl methacrylate)-d<sub>8</sub> is obtained by living anionic polymerization.

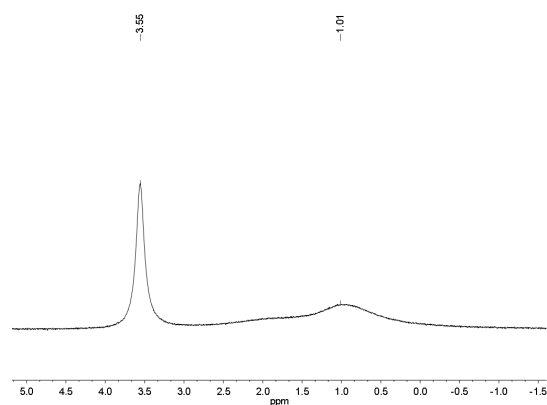
**Characterization:**

The product was characterized by size exclusion chromatography (SEC) and dNMR.

**Solubility:**

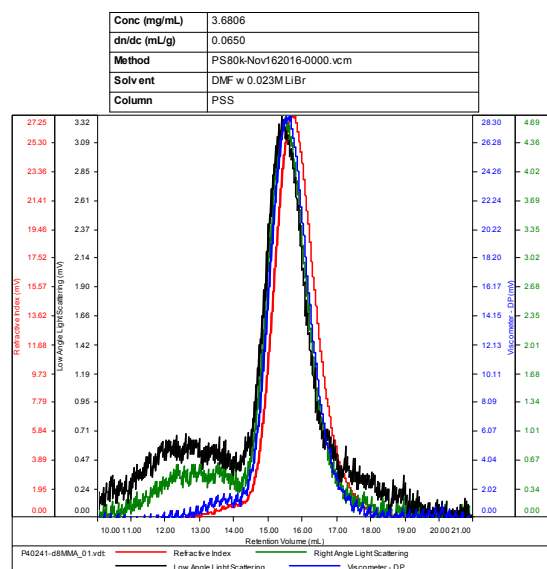
Deuterated poly (methyl methacrylate)-d<sub>8</sub> is soluble in THF, CHCl<sub>3</sub>, toluene and dioxane. The polymer precipitates from hexanes, methanol and ethanol.

**D NMR for the polymer: Atactic rich**



**SEC elugram of Homopolymer:**

**P40241-d8MMA**



Sample	Mn	Mw	Mp	Mw/Mn	IV
P40241-d8MMA_01.vdt	51,904	60,437	54,829	1.164	0.1194

**Thermogram of the sample:**

