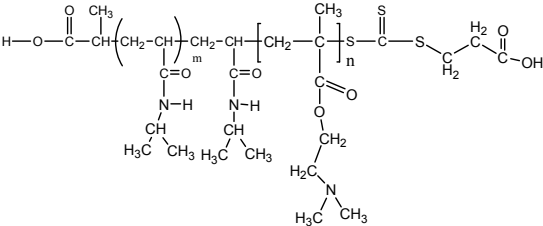


Sample Name:

Poly (N-isopropylacrylamide -b- NN-dimethylaminoethylmethacrylate)

Sample #: P16035F1-NIPAMDMAEMA

Structure



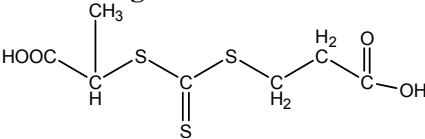
Composition:

Mn x 10 <sup>3</sup> PNIPAM-b-NNDMAEMA	PDI
12.0-b-84.5	1.80

Synthesis Procedure:

The polymer was synthesized by RAFT process.

RAFT reagent used:



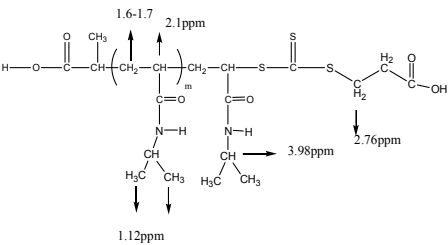
Characterization:

The polymer was characterized by SEC and <sup>1</sup>H NMR

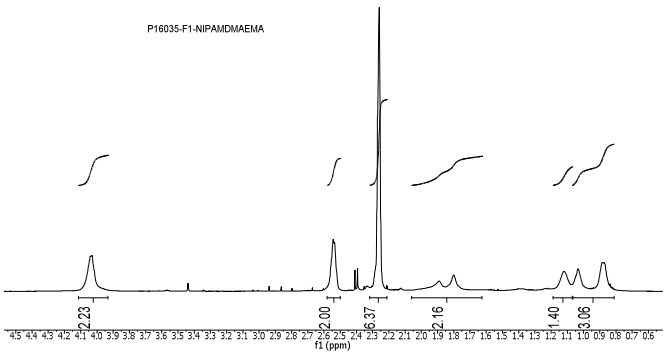
Solubility:

The polymer is soluble in THF, DMF, and Acetone.

<sup>1</sup>H NMR spectrum of the RAFT reagent:



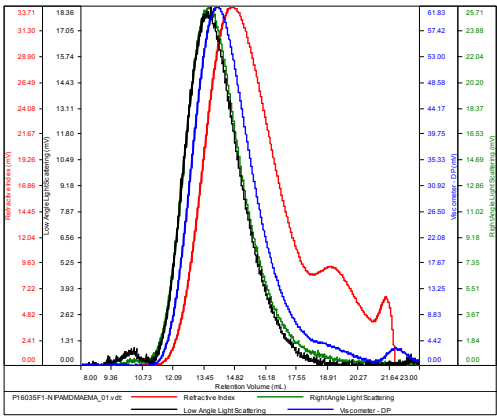
<sup>1</sup>H NMR Spectrum of the block copolymer:



SEC elugram of the block copolymer:

P16035F1-NIPAMDMAEMA

Conc (mg/mL)	8.4644
dn/dc (mL/g)	0.0870
Method	PS80K_December-2016-0004.vcm
Solvent	DMF w 0.023M LiBr
Column	PSS



Sample	Mn	Mw	Mp	Mw/Mn	IV
P16035F1-NIPAMDMAEMA_01.vdt	96,487	173,520	146,648	1.798	0.2509