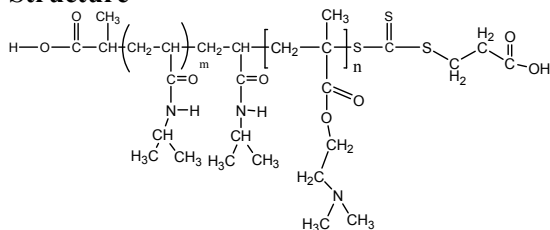


Sample Name:

Poly (N-isopropylacrylamide -b- NN-dimethylaminoethylmethacrylate)

Sample #: **P16035F5-NIPAMDMAEMA**

Structure



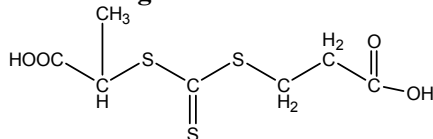
Composition:

$M_n \times 10^3$ PNIPAM-b-NNDMAEMA	PDI
8.0-b-87.0	2.2

Synthesis Procedure:

The polymer was synthesized by RAFT process.

RAFT reagent used:

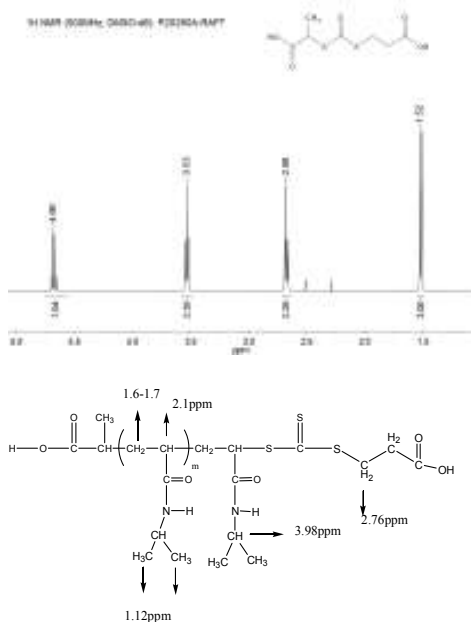


Characterization:

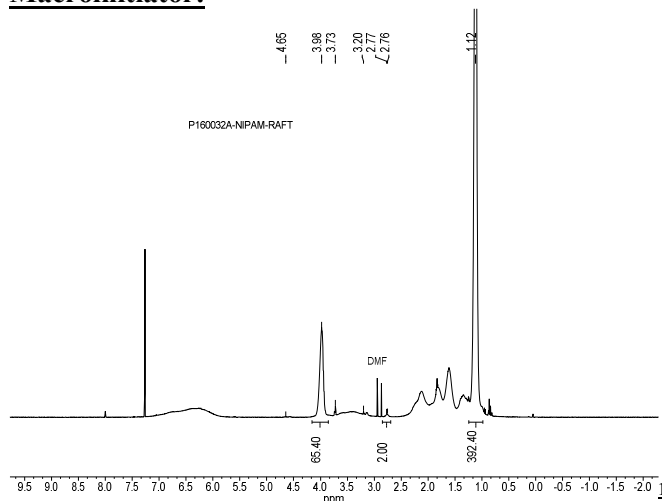
The polymer was characterized by SEC and ^1H NMR

Solubility: The polymer is soluble in THF, DMF, and Acetone.

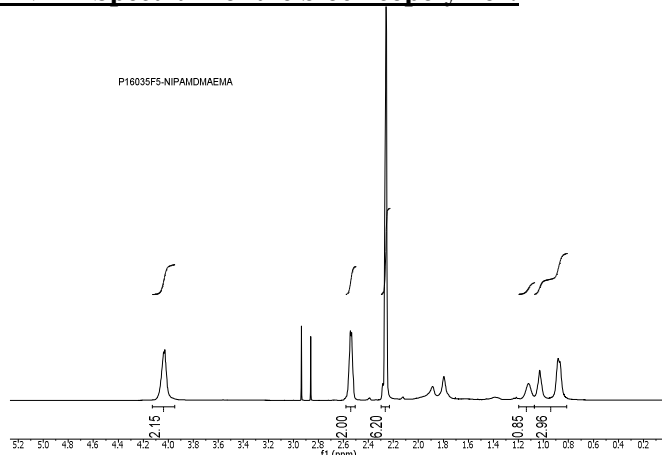
^1H NMR spectrum of the RAFT reagent:



^1H NMR spectrum of the PNIPAM RAFT Macroinitiator:



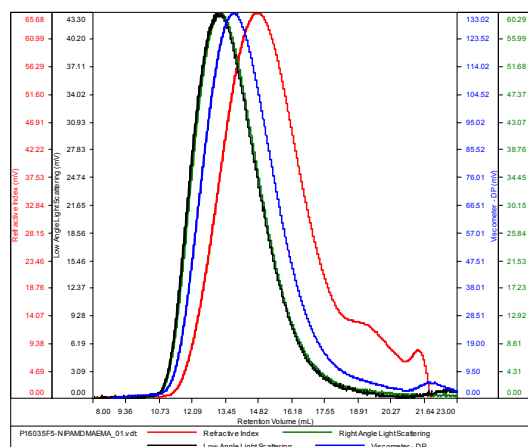
^1H NMR Spectrum of the block copolymer:



SEC elugram of the block copolymer:

P16035F5-NIPAMDMAEMA

Conc (mg/mL)	18.6698
dn/dc (mL/g)	0.0870
Method	PS80k_December-2016-0004.vcm
Solvent	DMF w 0.023M LiBr
Column	PSS



Sample	M_n	M_w	M_p	M_w/M_n	IV
P16035F5-NIPAMDMAEMA_01.vdt	94,920	212,703	149,710	2.241	0.2778