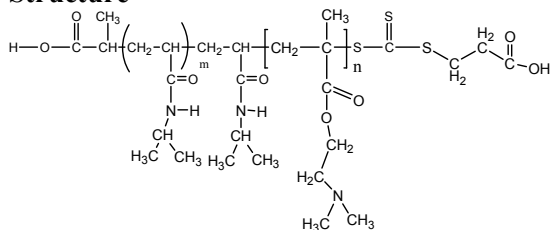


Sample Name:

Poly (N-isopropylacrylamide -b- NN-dimethylaminoethylmethacrylate)

Sample #: **P16062B-NIPAMDMAEMA**

Structure



Composition:

Mn x 10 ³ PNIPAM-b-NNDMAEMA	PDI
69.5-b-277.0	1.55

Synthesis Procedure:

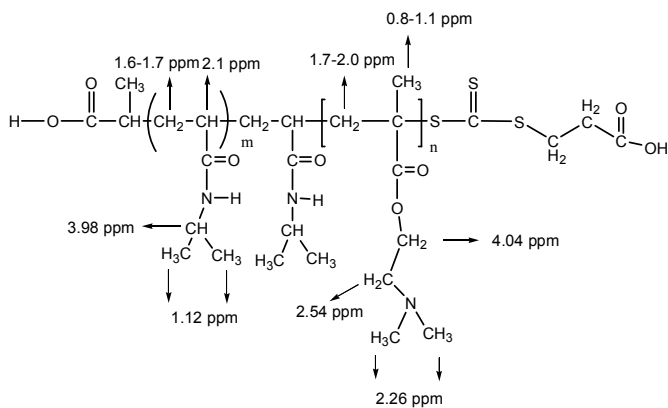
The polymer was synthesized by ATRP process.

Characterization:

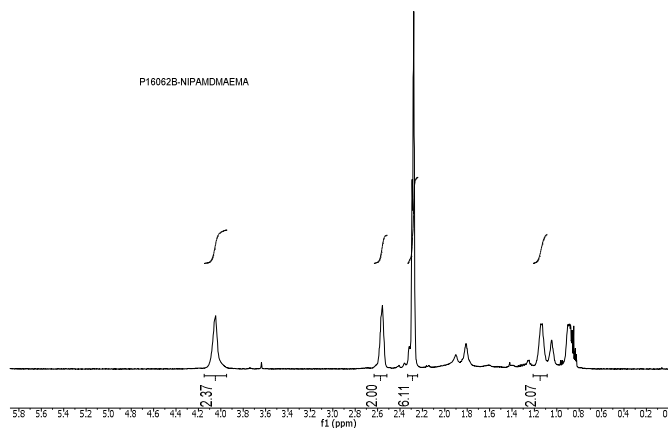
The polymer was characterized by SEC and ¹H NMR.

Solubility: The polymer is soluble in THF, DMF, and Acetone.

Chemical shift of NIPAMDMAEMA copolymer



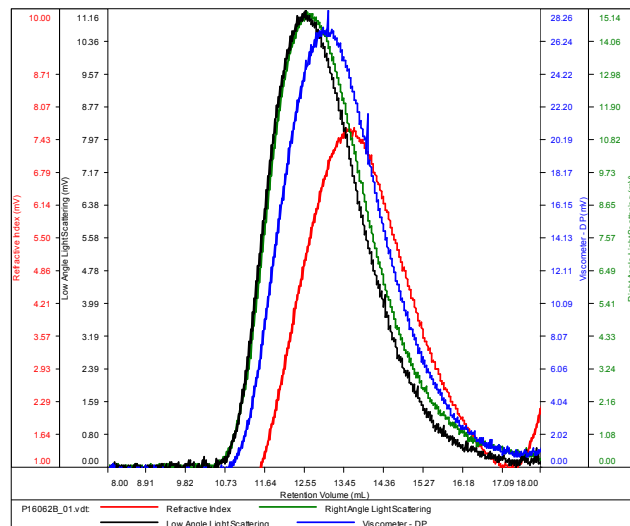
¹H NMR Spectrum of the block copolymer:



SEC elugram of the block copolymer:

P16062B

Conc (mg/mL)	1.7707
dn/dc (mL/g)	0.0800
Method	PS80k_December-2016-0004.vcm
Solvent	DMF w/0.023M LiBr
Column	PSS



Sample	Mn	Mw	Mp	Mw/Mn	IV
P16062B_01.vdt	346,607	536,888	401,080	1.549	0.4634