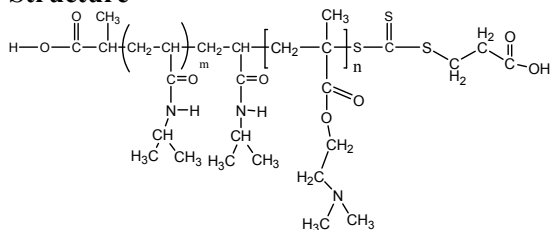


Sample Name:

Poly (N-isopropylacrylamide -b- NN-dimethylaminoethylmethacrylate)

Sample #: **P16062A-NIPAMDMAEMA**

Structure



Composition:

Mn x 10 ³ PNIPAM-b-NNDMAEMA	PDI
15.0-b-159.5	1.48

Synthesis Procedure:

The polymer was synthesized by ATRP process.

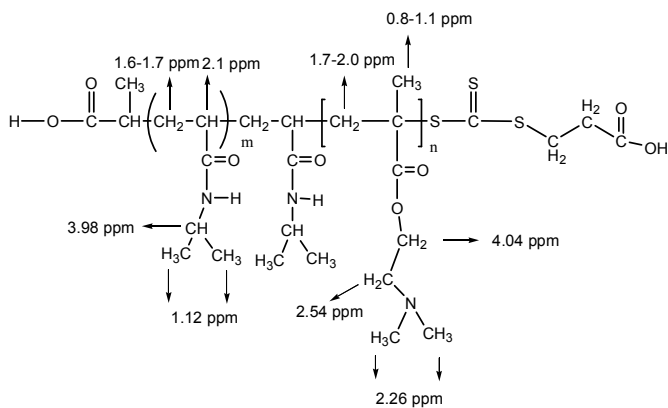
Characterization:

The polymer was characterized by SEC and ¹H NMR.

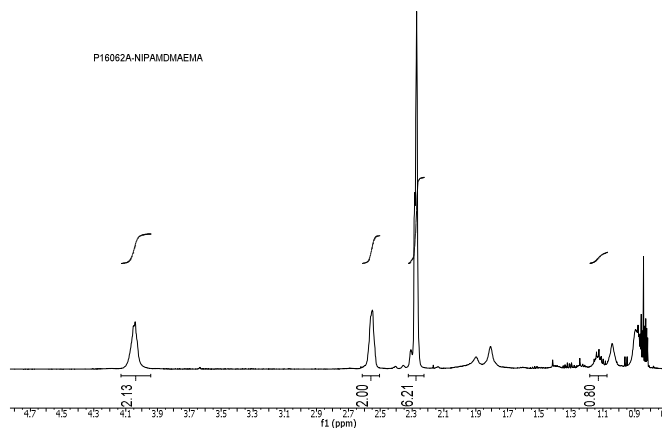
Solubility:

The polymer is soluble in THF, DMF, and Acetone.

Chemical shift of NIPAMDMAEMA copolymer



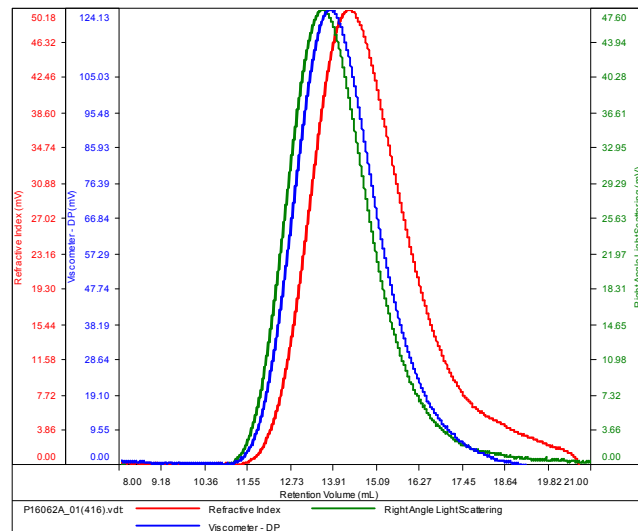
¹H NMR Spectrum of the block copolymer:



SEC elugram of the block copolymer:

P16062A

Conc (mg/mL)	11.5926
dn/dc (mL/g)	0.0800
Method	PS80k_December-2016-0004.vcm
Solvent	DMF w 0.023M LiBr
Column	PSS



Sample	Mn	Mw	Mp	Mw/Mn	IV
P16062A_01(416).vdt	174,341	257,968	239,653	1.480	0.3180