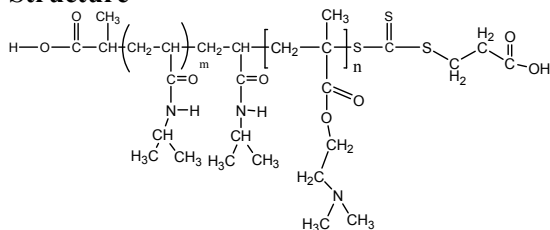


Sample Name:

**Poly (N-isopropylacrylamide -b- NN-dimethylaminoethylmethacrylate)**

Sample #: **P16069A3-NIPAMDMAEMA**

### Structure



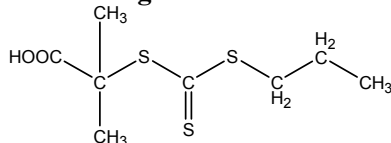
### Composition:

Mn x 10 <sup>3</sup> PNIPAM-b-NNDMAEMA	PDI
7.0-b-72.0	1.36

### Synthesis Procedure:

The polymer was synthesized by RAFT process.

### RAFT reagent used:

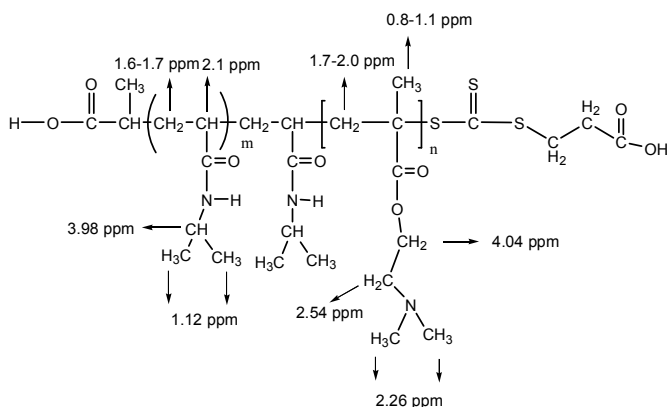


### Characterization:

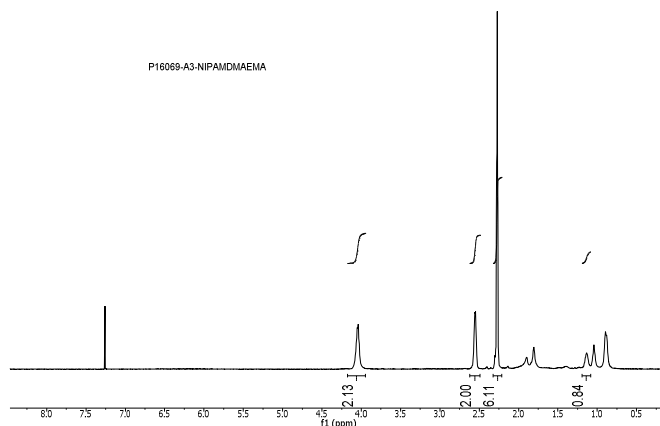
The polymer was characterized by SEC and <sup>1</sup>H NMR

**Solubility:** The polymer is soluble in THF, DMF, and Acetone.

### Chemical shift of NIPAMDMAEMA copolymer



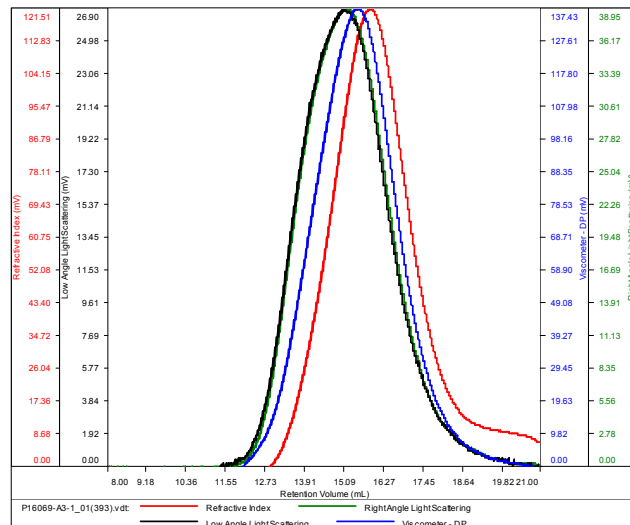
### <sup>1</sup>H NMR Spectrum of the block copolymer:



### SEC elugram of the block copolymer:

#### P16069-A3

Conc (mg/mL)	25.4993
dn/dc (mL/g)	0.0800
Method	PS80k_December-2016-0004.vcm
Solvent	DMF w/0.023M LiBr
Column	PSS



Sample	Mn	Mw	Mp	Mw/Mn	IV
P16069-A3-1_01(393).vdt	79,348	108,145	80,923	1.363	0.1718