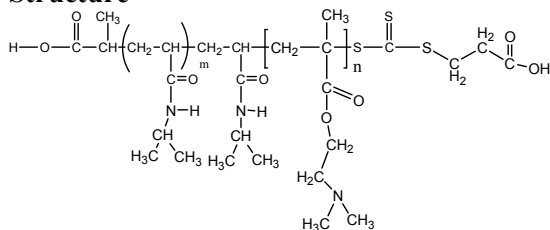


Sample Name:

**Poly (N-isopropylacrylamide -b- NN-dimethylaminoethylmethacrylate)**

Sample #: **P16069A2-NIPAMDMAEMA**

### Structure



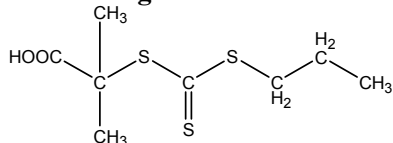
### Composition:

Mn x 10 <sup>3</sup> PNIPAM-b-NNDMAEMA	PDI
12.5-b-70.0	1.44

### Synthesis Procedure:

The polymer was synthesized by RAFT process.

### RAFT reagent used:

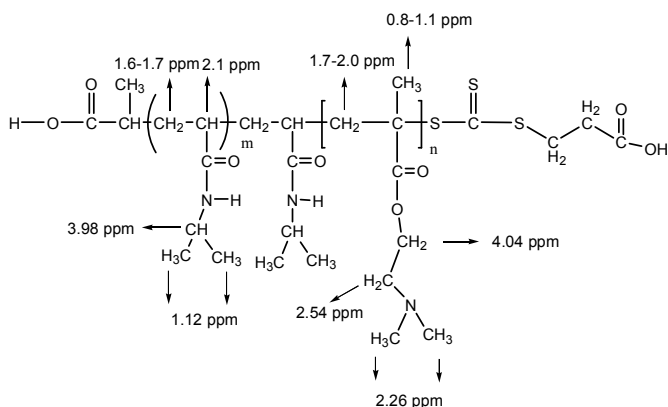


### Characterization:

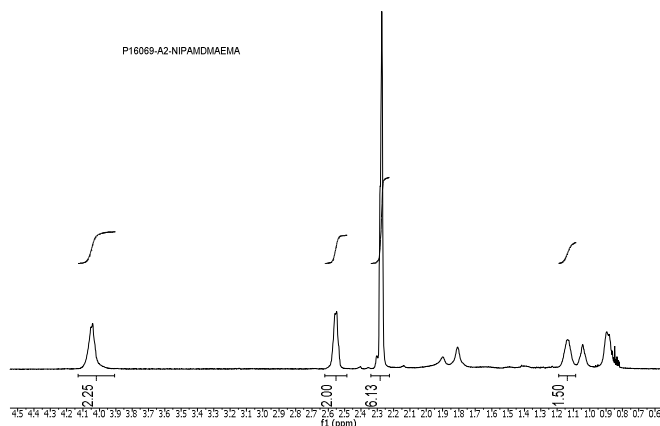
The polymer was characterized by SEC and <sup>1</sup>H NMR

**Solubility:** The polymer is soluble in THF, DMF, and Acetone.

### Chemical shift of NIPAMDMAEMA copolymer



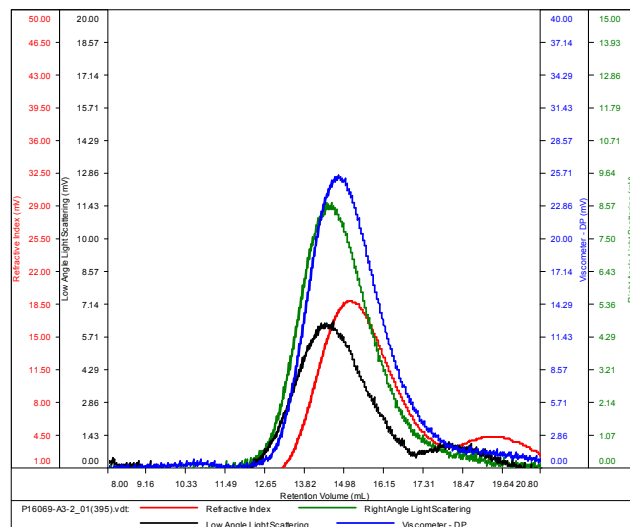
### <sup>1</sup>H NMR Spectrum of the block copolymer:



### SEC elugram of the block copolymer:

**P16069-A2**

Conc (mg/mL)	4.5326
dn/dc (mL/g)	0.0800
Method	PS80k_December-2016-0004.vcm
Solvent	DMF w 0.023M LiBr
Column	PSS



Sample	Mn	Mw	Mp	Mw/Mn	IV
P16069-A3-2_01(395).vdt	82,706	119,170	117,716	1.441	0.1612