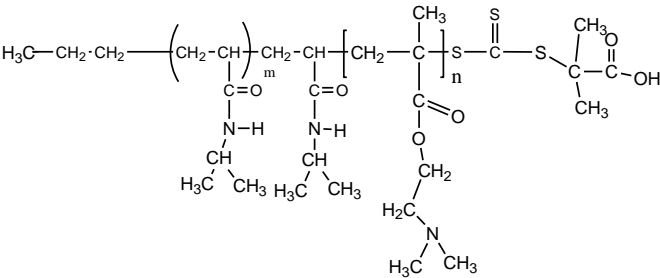


Sample Name:
Poly (N-isopropylacrylamide -b- NN-
dimethylaminoethylmethacrylate)

Sample #: P16066C-NIPAMDMAEMA

Structure:



Composition:

Mn x 10 ³ PNIPAM-b-NNDMAEMA	PDI
9.0-b-0.9	1.20

Synthesis Procedure:

Poly (N-isopropylacrylamide -b- NN-
dimethylaminoethylmethacrylate) was synthesized by
RAFT polymerization.

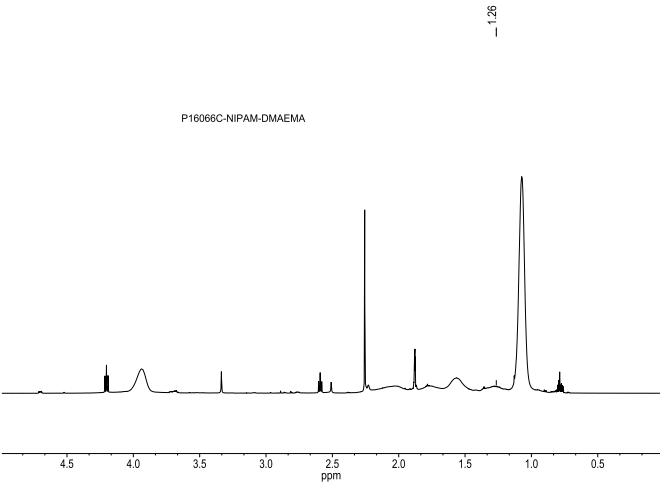
Characterization:

The molecular weight and polydispersity index (PDI) of
diblock copolymer were obtained by size exclusion
chromatography (SEC). The composition of the
polymer was characterized by NMR.

Solubility:

The polymer is soluble in THF, DMF, and Acetone.

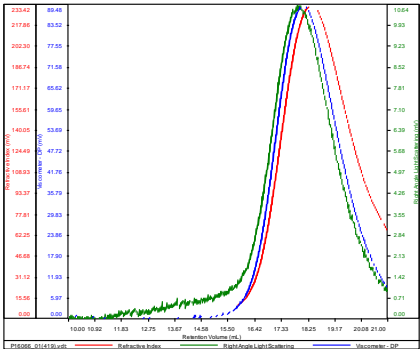
¹H NMR Spectrum of the block copolymer:



SEC elugram of the polymer:

P16066C-NIPAM

Conc (mg/mL)	53.2963
dn/dc (mL/g)	0.0770
Method	PS80k, December-2016-0004.vcm
Solvent	DMF w 0.023M LiBr
Column	PSS



Sample	Mn	Mw	Mp	Mw/Mn	IV
P16066_01(419).vdr	9,920	12,011	11,851	1,211	0,0476