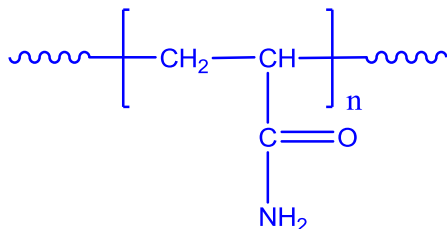


**Sample Name:** Poly (acrylamide)

**Sample #:** P16208-AMD

**Structure:**

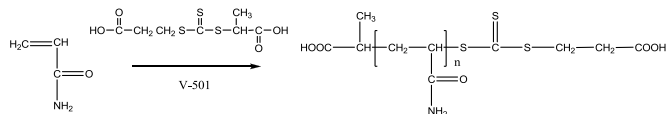


**Composition:**

$M_n \times 10^3$	Mw/Mn (PDI)
5.0	1.12

**Synthesis Procedure:**

Poly(acrylamide) is synthesized by RAFT polymerization of acrylamide using 4,4'-azo(4-cyanopentanoic acid) as initiator and trithiocarbonate as chain transfer agent in the mixture of water/isopropanol.



**Characterization:**

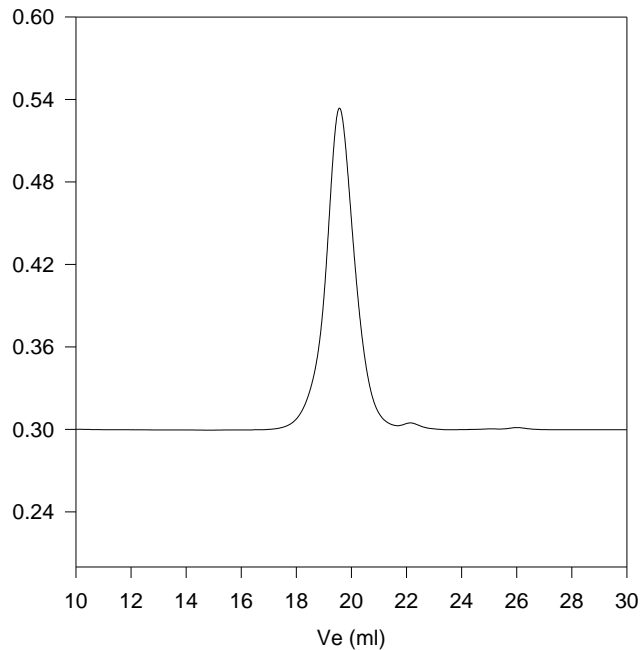
Polyacrylamide was analyzed by size exclusion chromatography (SEC) to obtain the molecular weight and polydispersity index (PDI) using water containing 0.1M NaNO<sub>3</sub> as an eluent and PEG as a standard.

**Solubility:**

The polymer is soluble in water.

**SEC of the polymer:**

**P16208-AMD**



Size Exclusion Chromatography of Poly(acrylamide)

$M_n=5000$ ,  $M_w=5600$  Mw/Mn=1.12(using PEG as standard)