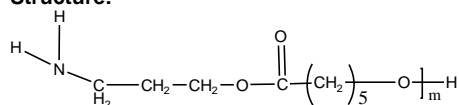


## Sample Name:

$\alpha$ -Amino  $\omega$ -Hydroxy ended **Poly( $\epsilon$ -caprolactone)**

Sample #: **P10932B-CLNH2**

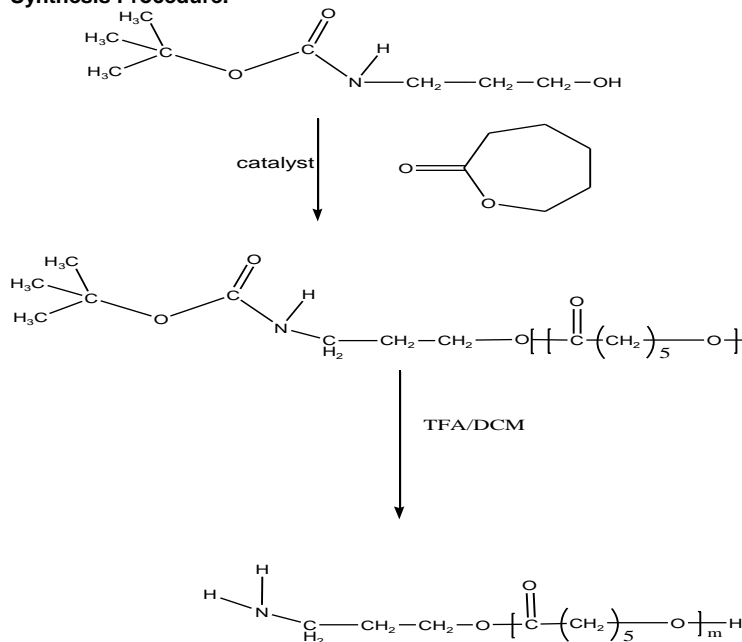
Structure:



## Composition:

| Mn x 10 <sup>3</sup>  | PDI |
|-----------------------|-----|
| 3.8                   | 1.6 |
| Amino Functionality > | 99% |

## Synthesis Procedure:



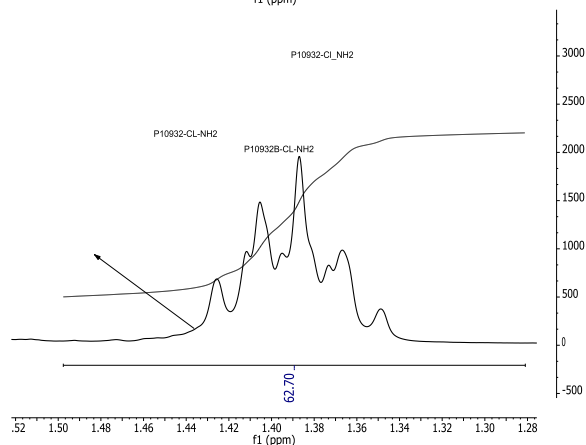
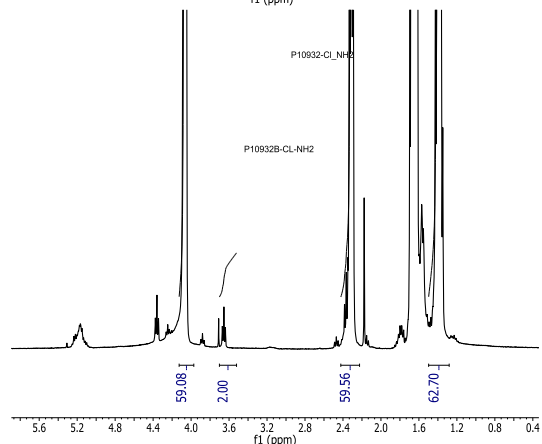
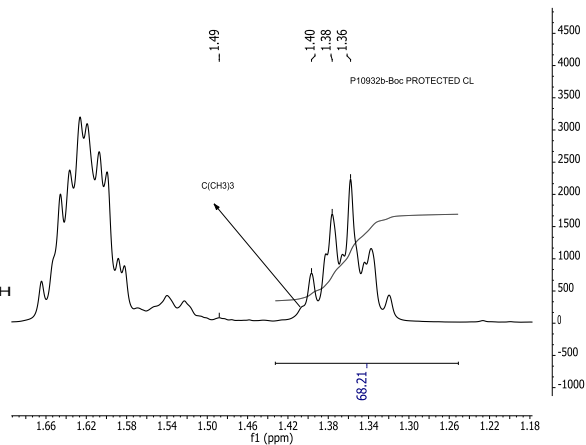
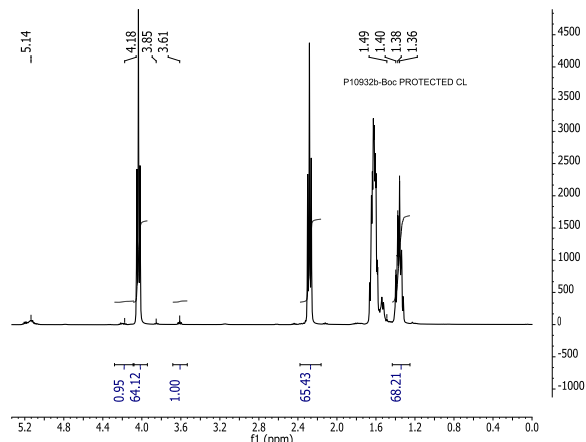
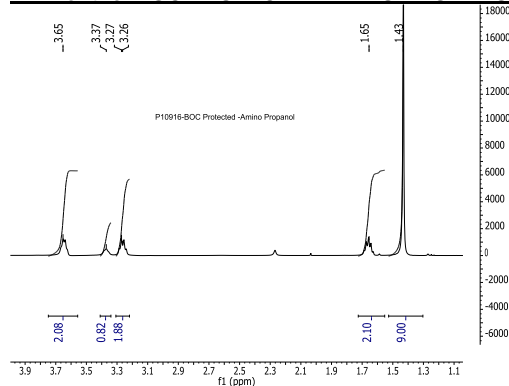
## Characterization:

The molecular weight is calculated from NMR of poly( $\epsilon$ -caprolactone) by comparing the peak area of the protons of anthracenemethanol at about ppm with the  $\epsilon$ -caprolactone protons at about 4.1 ppm. The polydispersity index (PDI) is obtained by size exclusion chromatography.

## Solubility:

The polymer is soluble in toluene, THF,  $\text{CHCl}_3$  and  $\text{CH}_2\text{Cl}_2$ .  
The polymer is insoluble in methanol, hexane and ether.

## NMR of the BOC PROTECTED AMINO PROPANOL:



## SEC of Sample:

**P10932B-CLNH2**

