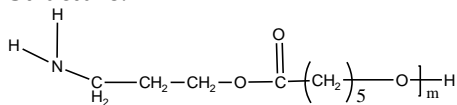
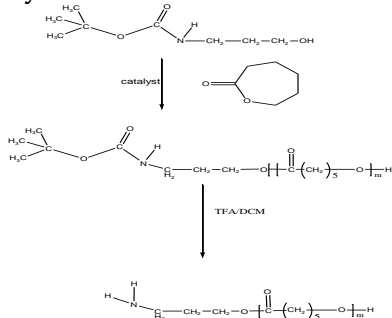


Sample Name: α -Amino ω -Hydroxy ended Poly(ϵ -caprolactone)**Sample #:** P10940-CLNH2**Structure:****Composition:**

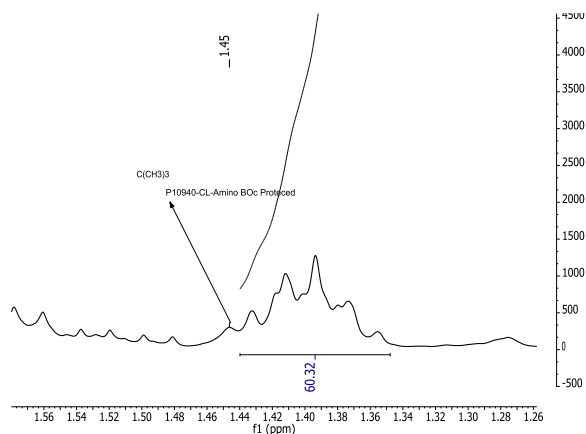
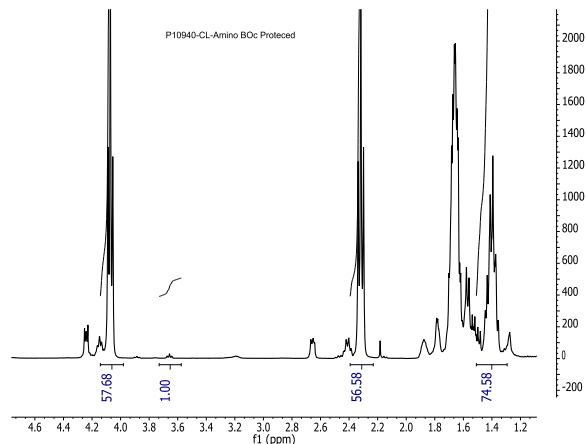
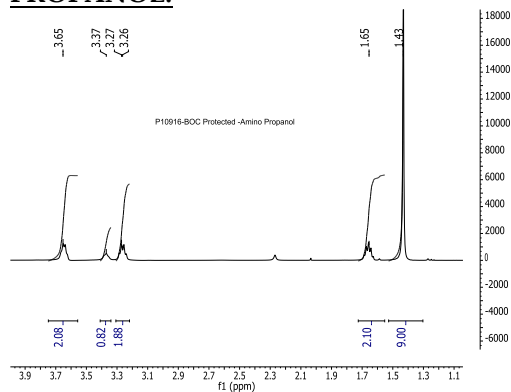
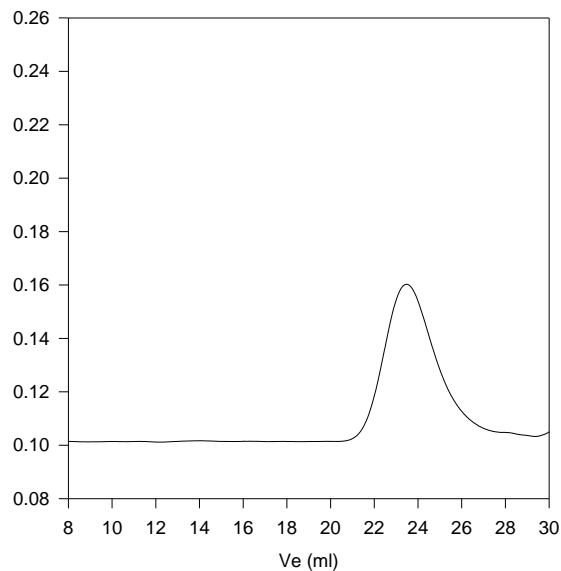
$M_n \times 10^3$	PDI
3.2	1.8
Amino Functionality	>99%

Synthesis Procedure:**Characterization:**

The molecular weight is calculated from NMR of poly(ϵ -caprolactone) by comparing the peak area of the protons of anthracenemethanol at about 4.1 ppm with the ϵ -caprolactone protons at about 4.1 ppm. The polydispersity index (PDI) is obtained by size exclusion chromatography.

Solubility:

The polymer is soluble in toluene, THF, CHCl_3 and CH_2Cl_2 . The polymer is insoluble in methanol, hexane and ether.

NMR of the BOC PROTECTED AMINO PROPANOL:**SEC of Sample:****P10940-CLNH2**

Size Exclusion Chromatogram

 $M_n=3,200$, $M_w=5700$, $M_w/M_n=1.8$