

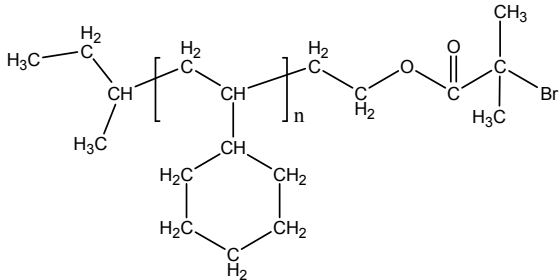
Sample Name: ω -Bromo-terminated Poly (vinyl cyclohexane)

Synonym:

ω -Bromo-terminated Poly (cyclohexyl ethylene)

Sample #: P16168-VCHBr

Structure:



Composition:

Mn x 10 ³	PDI
5.3	1.09
T _g (°C)	92

Synthesis Procedure:

ω -Br Terminated Poly cyclohexyl ethylene was prepared by Hydrogenation of OH terminated Polystyrene and then converting OH to Br with α -Bromoisobutyryl bromide.

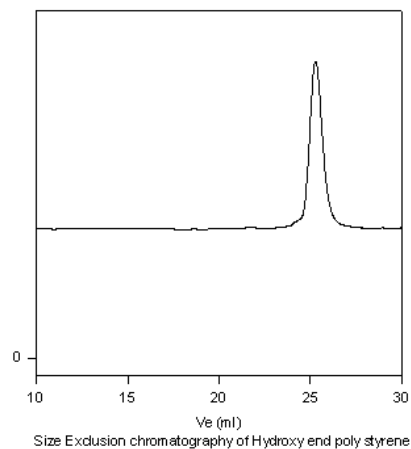
Characterization:

The product was characterized by size exclusion chromatography (SEC) and ¹H NMR.

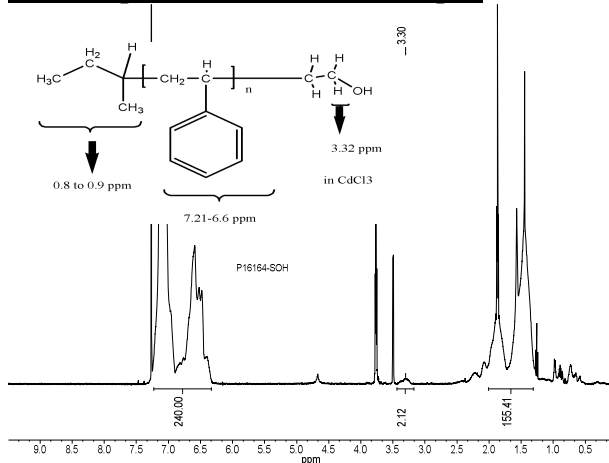
Solubility:

Polymer is soluble in toluene, THF, CHCl₃ and can be precipitated in water and cold methanol.

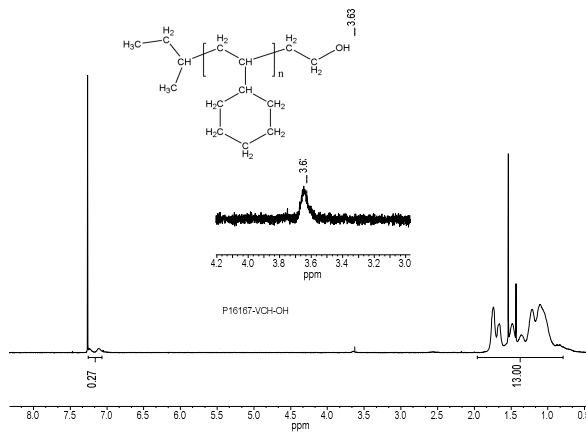
SEC elugram of the SOH Sample:



HNMR spectrum of the SOH Sample:



HNMR spectrum of the Polymer: VCH-OH terminated



After converting OH to Br

