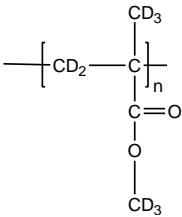


Sample Name: Poly (methyl methacrylate)-d₈
Atactic rich

Sample #: P40900B-dPMMA

Structure:



Composition:

Mn x 10 ³	PDI
389.0	1.88
Tg	127 °C

Synthesis Procedure:

Deuterated poly (methyl methacrylate)-d₈ is obtained by living anionic polymerization.

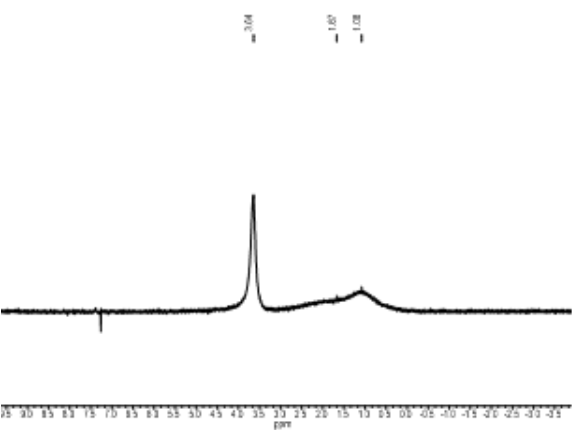
Characterization:

The product was characterized by size exclusion chromatography (SEC) and D NMR.

Solubility:

Deuterated poly (methyl methacrylate)-d₈ is soluble in THF, CHCl₃, toluene and dioxane. The polymer precipitates from hexanes, methanol and ethanol.

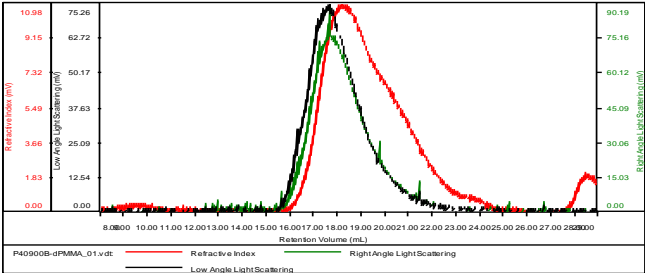
D NMR for the polymer: Atactic rich



SEC elugram of Homopolymer:

P40900B-dPMMA

Concentration (mg/mL)	1.0000
Sample dn/dc (mL/g)	0.1850
Method File	PS80K_2017-12-21_new-0000.vcm
Column Set	3x PL 1113-6300
Solvent	THF



Sample	Mn (Da)	Mw (Da)	Mw/Mn	IV (dL/g)	Mp (Da)
P40900B-dPMMA_01.v	388,972	730,778	1.879	3.3455	929,652

Thermogram of the sample:

Size: 5.7000 mg

DSC

