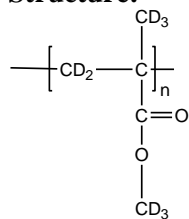


**Sample Name:** Poly (methyl methacrylate)-d<sub>8</sub>  
**Atactic rich**

**Sample #:** P40900-dPMMA

**Structure:**



**Composition:**

Mn x 10 <sup>3</sup>	PDI
59.0	1.07
Tg	127 °C

**Synthesis Procedure:**

Deuterated poly (methyl methacrylate)-d<sub>8</sub> is obtained by living anionic polymerization.

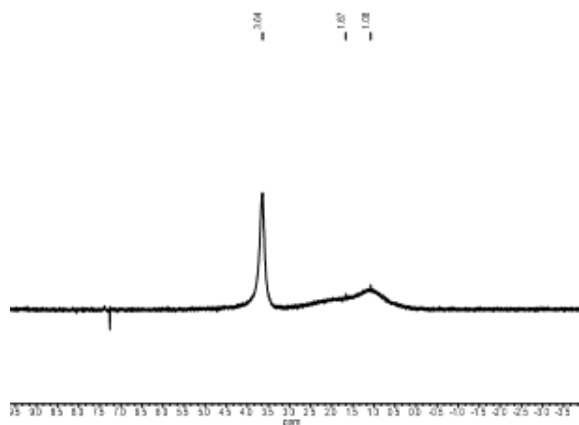
**Characterization:**

The product was characterized by size exclusion chromatography (SEC) and D NMR.

**Solubility:**

Deuterated poly (methyl methacrylate)-d<sub>8</sub> is soluble in THF, CHCl<sub>3</sub>, toluene and dioxane. The polymer precipitates from hexanes, methanol and ethanol.

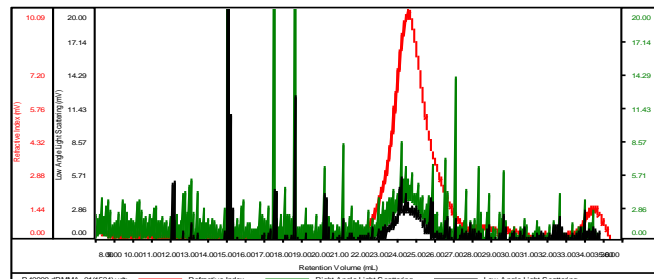
**D NMR for the polymer: Atactic rich**



**SEC elugram of Homopolymer:**

**P40900-dPMMA**

Concentration (mg/mL)	1.2408
Sample dn/dc (mL/g)	0.0840
Method File	PS80K-jan-2018-0000.vcm
Column Set	3x PL 1113-6300
Solvent	THF



Sample	Mn (Da)	Mw (Da)	Mw/Mn	IV (dL/g)	Mp (Da)
P40900-dPMMA_0	58,807	62,841	1.069	0.2942	78,931

**Thermogram of the sample:**

Size: 5.7000 mg

DSC

