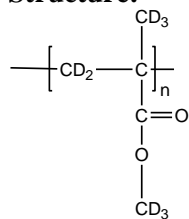


**Sample Name:** Poly (methyl methacrylate)-d<sub>8</sub>  
**Atactic rich**

**Sample #:** P40931-dPMMA

**Structure:**



**Composition:**

Mn x 10 <sup>3</sup>	PDI
15.5	1.02
Tg	127 oC

**Synthesis Procedure:**

Deuterated poly (methyl methacrylate)-d<sub>8</sub> is obtained by living anionic polymerization.

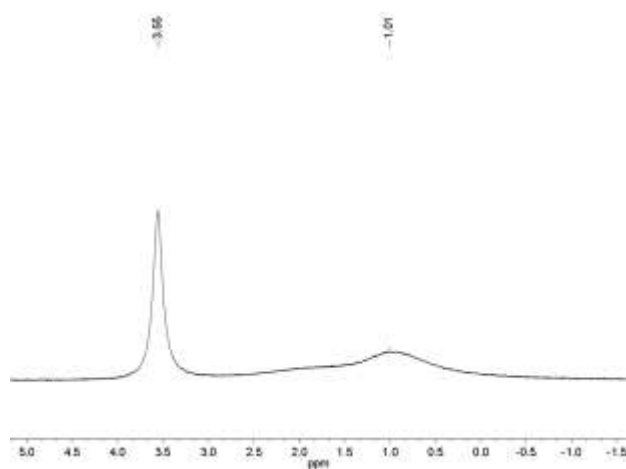
**Characterization:**

The product was characterized by size exclusion chromatography (SEC) and D NMR.

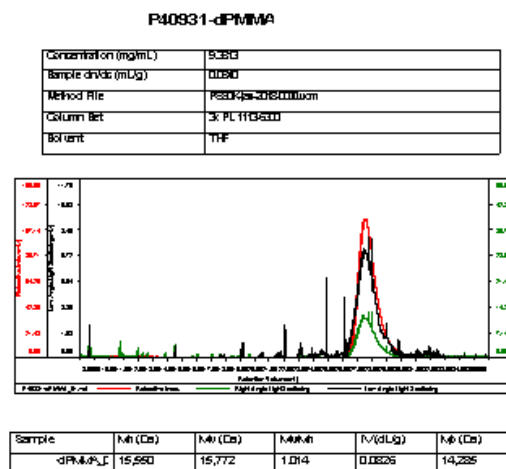
**Solubility:**

Deuterated poly (methyl methacrylate)-d<sub>8</sub> is soluble in THF, CHCl<sub>3</sub>, toluene and dioxane. The polymer precipitates from hexanes, methanol and ethanol.

**D NMR for the polymer: Atactic rich**



**SEC elugram of Homopolymer:**



**DSC Thermogram of the sample:**

