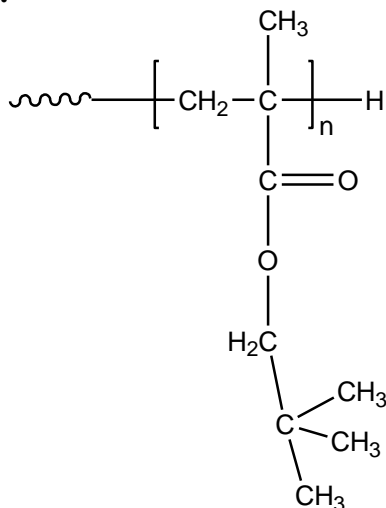


Sample Name: Poly (neopentyl methacrylate)

Sample #: P40914-NPMA

Structure:



Composition:

$M_n \times 10^3$ (g/mol)	M_w/M_n
92.0	2.0

Synthesis procedure:

The polymer was synthesized by anionic polymerization process.

Characterization:

The molecular weight and polydispersity index (M_w/M_n) of poly (neopentyl methacrylate) were obtained by size exclusion chromatography (SEC).

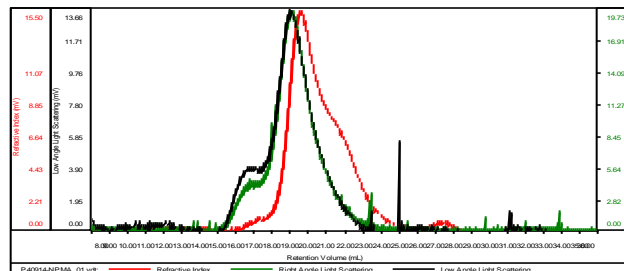
Solubility:

Poly (neopentyl methacrylate) is soluble in THF, chloroform, toluene, and dioxane. The polymer precipitates from hexanes, methanol, and ethanol.

SEC elugram of the homopolymer:

P40914-NPMA

Concentration (mg/mL)	2.4534
Sample dn/dc (mL/g)	0.0840
Method File	PS80K-jan-2018-0000.vcm
Column Set	3x PL 1113-6300
Solvent	THF



Sample	Mn (Da)	Mw (Da)	Mw/Mn	IV (dL/g)	Mp (Da)
P40914-NPMA_01	91,614	188,822	2.061	0.5615	169,953