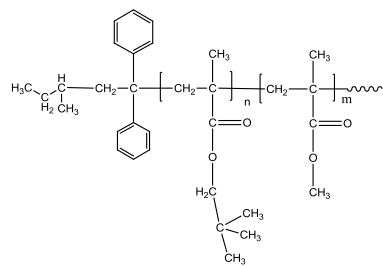


Sample Name: Poly (neopentyl methacrylate-b-methyl methacrylate)

Sample #: P40936-NPMAMMA

Structure:



Composition:

| | |
|--------------------------------------|------|
| Mn x 10 ³ PNPMA-b-PMMA | PDI |
| 15.0-b-380.5 | 1.13 |

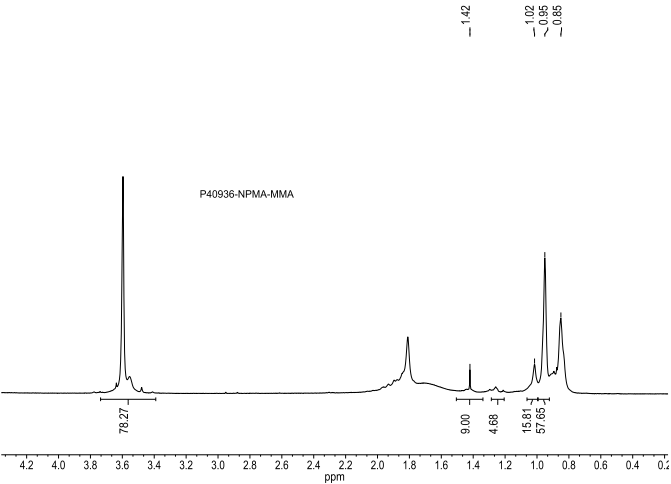
Synthesis:

The diblock copolymer was synthesized by anionic polymerization process.

Characterization:

The polymer was characterized by ¹H-NMR and size exclusion chromatography (SEC).

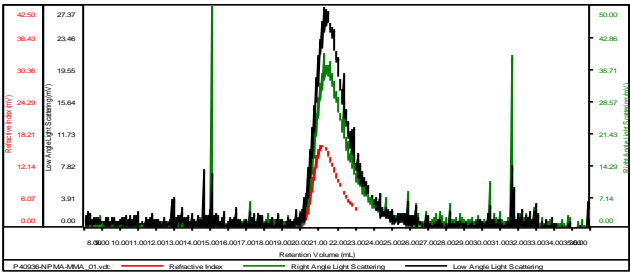
¹H-NMR Spectrum of the block copolymer:



SEC elugram of the block copolymer:

P40936-NPMA-MMA crd

| | |
|-----------------------|-------------------------|
| Concentration (mg/mL) | 1.6625 |
| Sample dn/dc (mL/g) | 0.0840 |
| Method File | PS80K-jan-2018-0000.vcm |
| Column Set | 3x PL 1113-6300 |
| Solvent | THF |



| Sample | Mn (Da) | Mw (Da) | Mw/Mn | IV (dL/g) | Mp (Da) |
|----------------|---------|---------|-------|-----------|---------|
| P40936-NPMA-MV | 395,532 | 446,535 | 1.129 | 1.2397 | 354,148 |